

# XTREME

be anything.

EN







The leading system for easy and sustainable event building.

Easy and sustainable event building

4

b62°

6

Why beMatrix?

7

## Product principles

### Xtreme

Spans	14
beConstruct	16
beTruss	34
Double Deck	54

### Support

Logistics	81
MybeMatrix	82
Global Rental Network	84
Contact	86



# Easy and sustainable event building

beMatrix is the true heir and Belgian manufacturer of the original frame system with big holes, launched in 1993. beMatrix leverages the event industry towards positive transformation with a higher convenience and return for customers in a sustainable manner.



## Our mission is to be the leading system for easy and sustainable event building.

The beMatrix system offers event builders and exhibitors endless possibilities with endless kinds of concepts for exhibition stands, congress walls, indoor and outdoor events and pop-ups.



## A sustainable step forward: frames with ECO+ finish.

beMatrix introduced the ECO frame as an ecological alternative to the anodised frame. Anodising is a chemical surface treatment harmful to the environment. We invented a brushing technique with the same look as the end result, but without environmental risks.



More on our efforts to minimise our impact on the environment in our **Sustainability Charter**.



Scan the QR-code for impact.



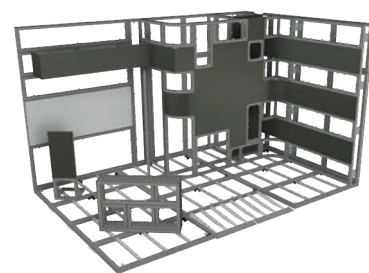


# b62<sup>®</sup>



All dimensions of the b62<sup>®</sup> frame system have been based on the perfect **62 × 62 mm matrix**. The width, length and height of the constructions are always multiples of 62.

The 62 mm matrix delivers the ultimate **modularity** with countless configuration options.



## Why beMatrix?

### Fast & easy design and build-up

Faster and easier than assembling a traditional profile-based system, light weight and no tools needed!

### High return on investment

The same frame can be used for walls, ceilings and floors. Since assembly is quick and easy, labour costs can be cut.

### Sustainable system

Frames can be reused over and over again. They are also recyclable with minimal energy and without any loss of quality.

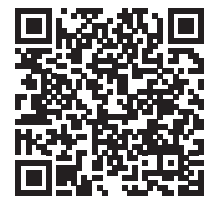
### International network

There is always someone around who can assist you in the beMatrix network; beMatrix operates worldwide.

### Local service and stock close to you

We have rental and service centres worldwide to support you with rental equipment, training or build-up support .





# Product Principles



1



**b62**  
The 62 mm grid assures a perfect fit in any direction. Create any shape imaginable.

2



**Toolless**  
Hardly any tools needed. The fastest system to build.

3



**System & custom**  
Unique merge of the modular system and custom elements.

4



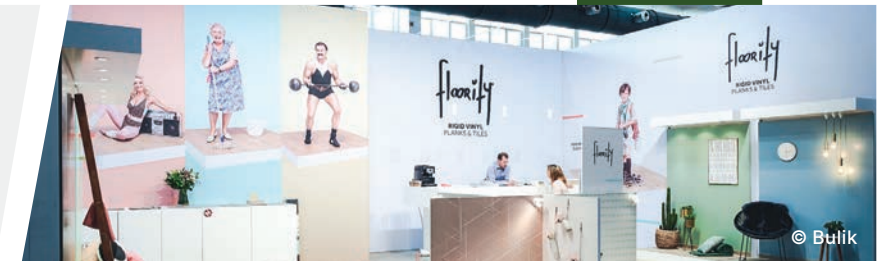
**ECO surface treatment**  
Brushing process that does not harm the environment.

8



**Keep the body, change the skin**  
Endlessly reusable, just change the graphics!

7



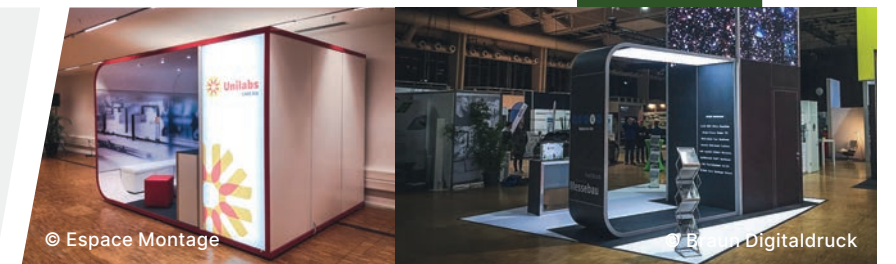
**beMatrify, our DNA**  
Easy to finish (panels/textile) and always connectable to the rest of the system.

6



**Welded frames**  
Lighter, stronger and faster assembly than standard frames.

5



**360°**  
Use the frame for walls, ceilings and floors. It harmoniously blends into one.





**Xtreme**



# Spans

In the world of live events and exhibitions, we've noticed the desire of our clients to build bigger. These types of designs **demand more load bearing capacity on the structures**. Let's take a look at the different beMatrix options to build small, medium or large spans in a safe and efficient way.

## Small Spans

For small and limited spans you're all set using the **b62 frames** combined with the **corner profile square 62**.



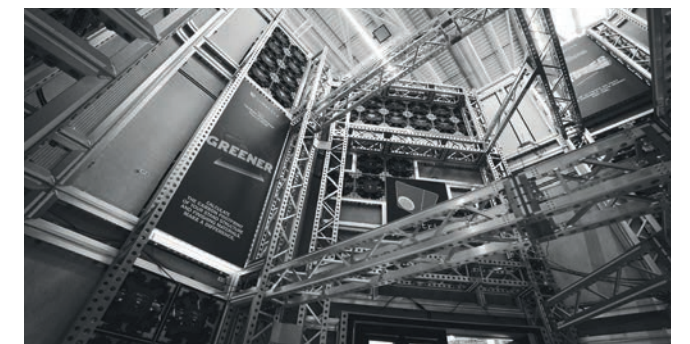
## Medium spans

For medium spans that **do not carry heavy items** like LEDskin® (not load bearing), we recommend using **beConstruct**, our newest construction profile.



## Large spans

Want to take your build a step further? Is your design **load bearing**? Then **beTruss** is your solution for large spans. It's even possible to add LEDskin® tiles to the beTruss provided that LEDskin® and beTruss are built at the same time.



S



M



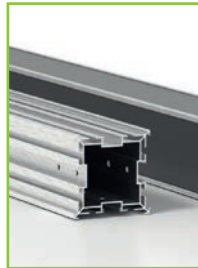
L



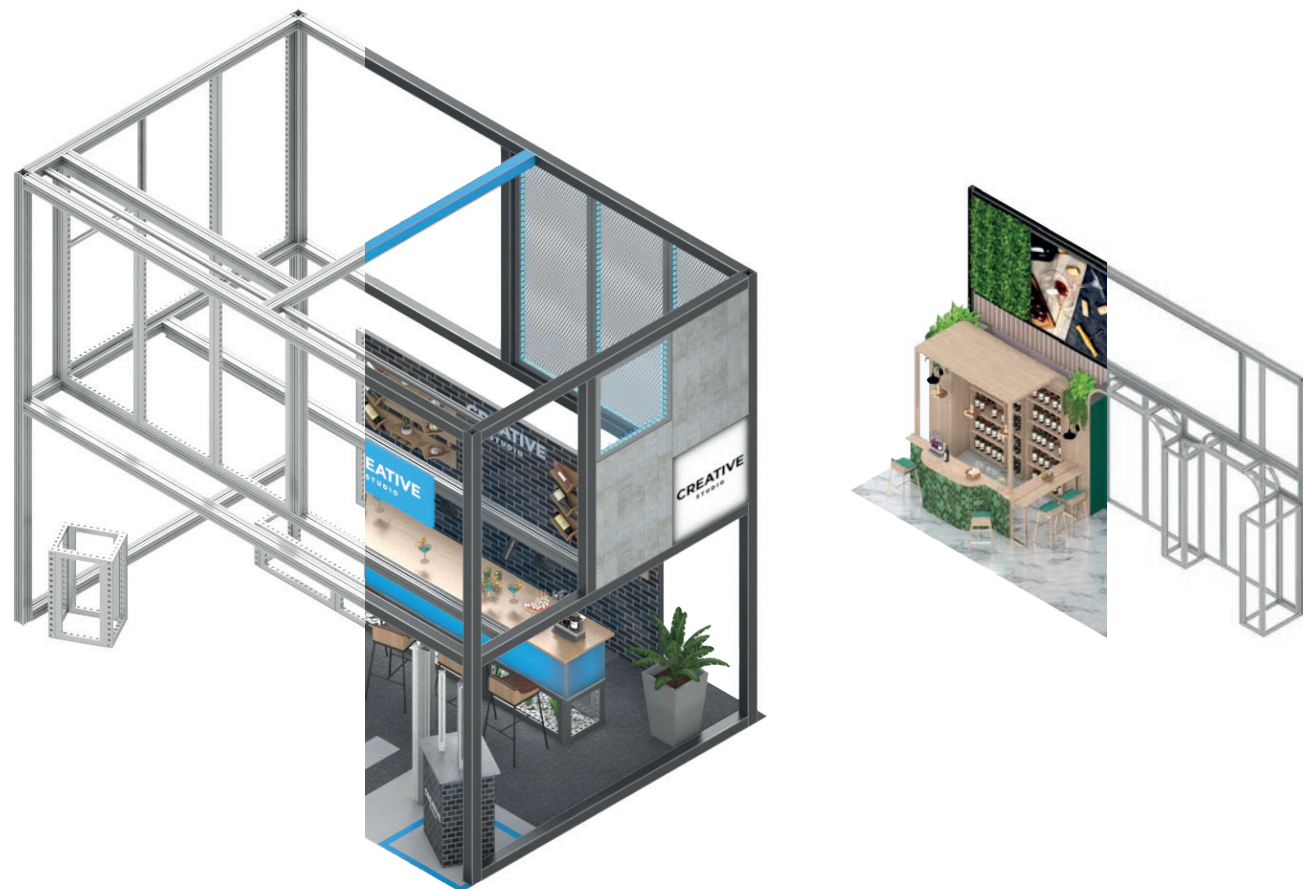


# beConstruct

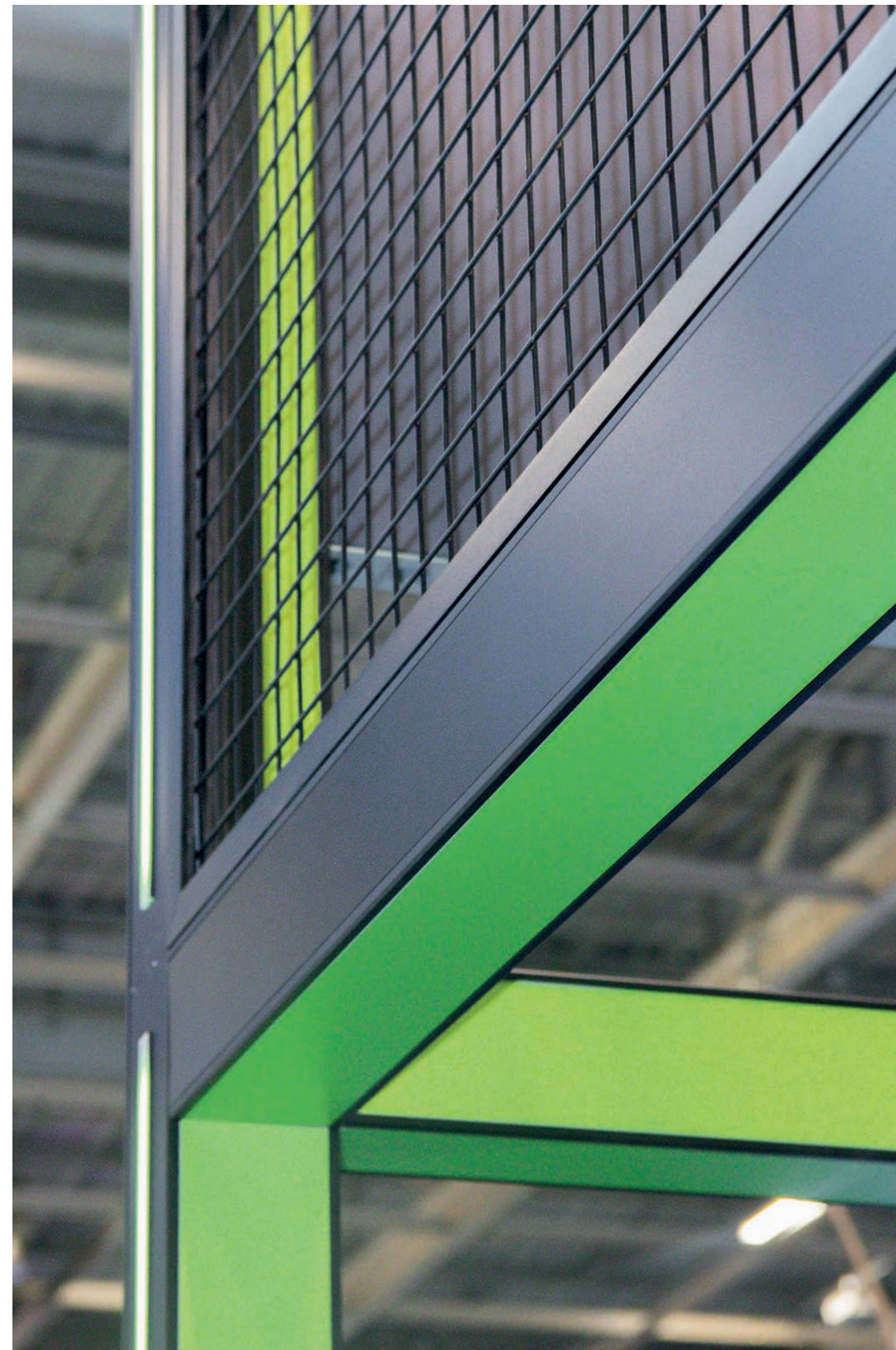
beConstruct is our construction profile that **lets you build big and open non-load bearing constructions**. It's the perfect solution for designs that require more than just frames but less than beTruss. The dimensions of beConstruct are **124 mm by 124 mm** making it fit perfectly within the beMatrix system (where width, length and height are always multiples of 62). beConstruct can be perfectly attached to the existing frames in your stock, using existing and a number of new connectors.



This beConstruct construction profile is **lighter to build with** compared to Double Deck's poles & beams. This means faster build times and reduced labor costs. You can build in both 90° (=corners) and in 180° (=extensions) directions. Use the D30 slot connector to hang b62 frames on it. The **migration between beConstruct and b62 frames** opens many design opportunities in the exhibit and event industry.









## The body

### 90° connector

A strong beMatrix connector connecting 2 aluminum construction profiles at a perfect 90° angle. Patented design.

Art. nr 710 30 0214



### Slot connector support

The slot connector support can be put in the construction profile beforehand. Always used together with the 710 30 0214 in a 90° connection. In addition, it also serves as a support to rest a horizontal profile on before securing the 90° connector.

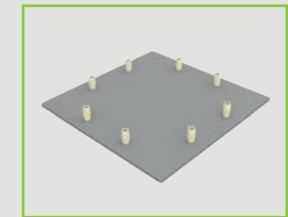
Art. nr 710 30 0217



### End piece

The cherry on the cake: an end piece that fits the beConstruct profile perfectly. For a neat result!

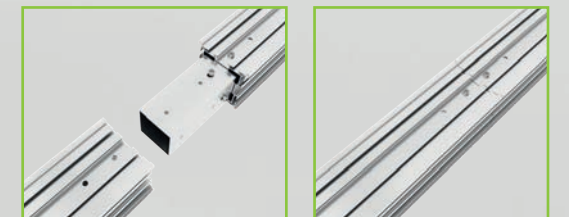
Art. nr 980 11 01 TG



### 180° connector

A strong beMatrix connector connecting 2 aluminum construction profiles in a 180° extension. Patented design.

Art. nr 710 30 0215



### Construction profile

The construction profile offers a solution for medium spans.

Dimensions 124 mm x 124 mm

Art. nr 980 ++++ D4X V





beConstruct is one of the building blocks within the full beMatrix range. Unleash your creativity and design never-before-seen exhibition stands!

### Track Light profile

Adding lighting to your design is a piece of cake. The cross section of the beConstruct profile includes a notch to slide in a Track Light Profile into it. Even better: there's a channel on the inside where you can hide the cables. They are secured with a clip.

Art. nr 11 261 00 ++++



### SAM Light / BIG SAM Light

The SAM Light & BIG SAM Light connector is an attachment piece to integrate these lights to beMatrix's construction profile. Simply slide the plate onto the SAM Light connector or the BIG SAM Light connector and mount on the construction profile! Yes, it can be that simple.

Art. nr 710 30 0219



### Frames

Connect the construction profile to the b62 frames using the D30 slot connector and the M8 pin.

Art. nr 901 830 001

Art. nr 901 2048 0066 E



### Lightbox / glass profile

Use the mounting bracket with both M6 and M8 holes to mount, lightboxes, glass profile, etc. to the construction profile.

Art. nr 710 30 0218





## Lightbox

Use the mounting bracket with both M6 and M8 holes to mount, lightboxes, glass profile, etc. to the construction profile.

Art. nr 710 30 0218



## Double Deck

A strong beMatrix connector that will connect the be-Construct to the Double Deck in 180°. The possibility to add the beConstruct to the Double Deck gives you tons of new design inspiration, isn't it?

Art. nr 710 30 0216







...ALS

beMatrix

RED  
DOT  
BAR

RED  
DOT  
BAR

beMatrix

beMatrix Residence

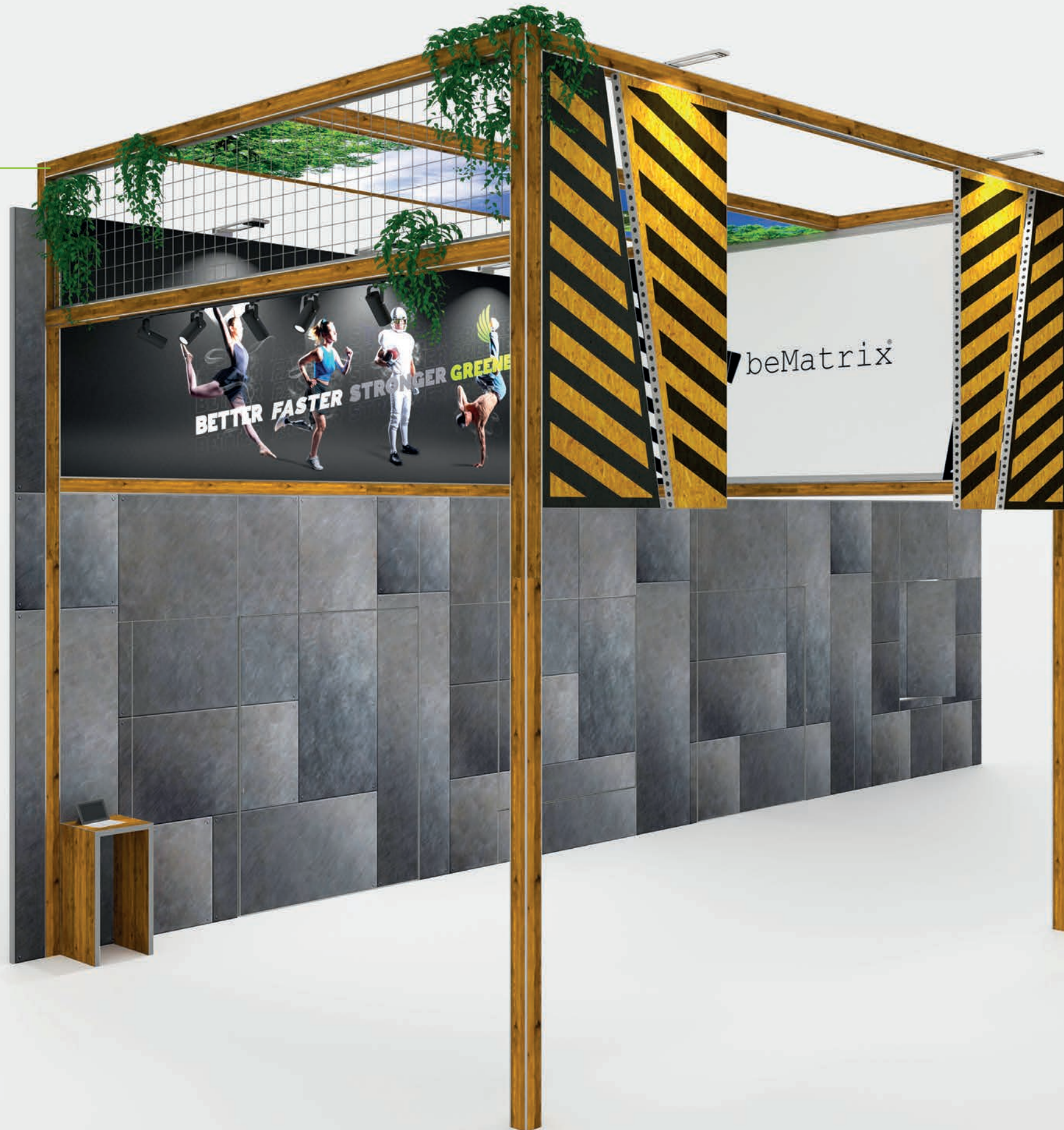




## The skin

### Panels

Finish the 4 sides of the aluminium profile by using 3mm thick (branded or non-branded) panels, guaranteeing you a sleek result!



### Tip

With lighting, you can get as creative as you want! Our ultimate tip is to mount a LED strip in the construction profile. This will accentuate the poles and emphasise the straight lines in your stand.







## The add-ons



### Adjustable foot for the construction profile

The adjustable foot for the construction profile can be mounted on the underside of the profile to change its height.

Art. nr

901 20 040



### Suspension connector

The rigging (suspension) connector is a super-strong connector with an eye to hang your beConstruct setup from the ceiling.

Art. nr

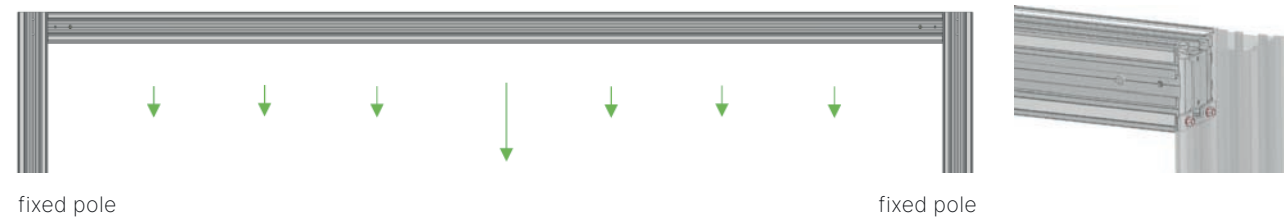
710 30 0220





## The target load tables

### Profile clamped (with 90° connector and support block): one full profile



Load limits and displacements:

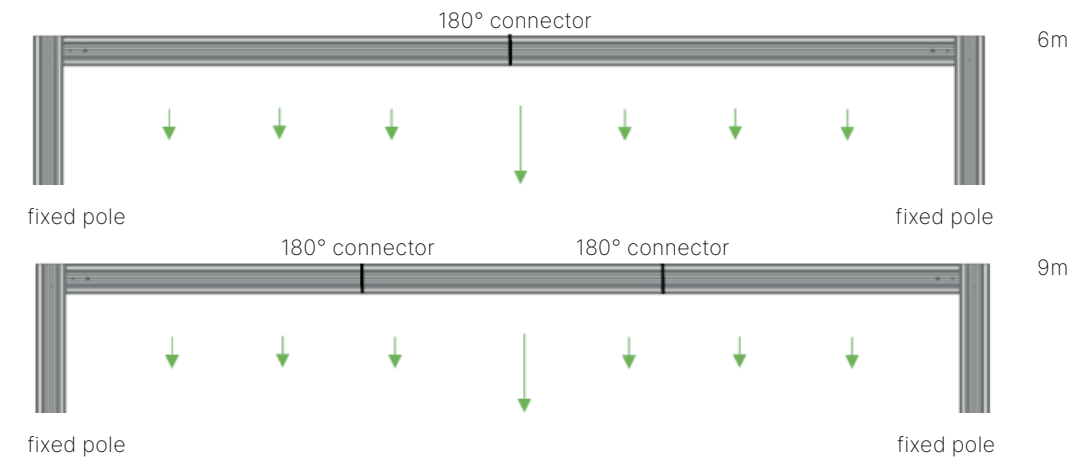
Length (m) / (ft)	UDL					CPL				
	(N/m)	(kg/m)	(lbf/ft)	(mm)	(in)	(N)	(kg)	(lbf)	(mm)	(in)
3 / 9.84	2.029 <sup>1</sup>	207 <sup>1</sup>	139 <sup>1</sup>	9.9	0.39	6.088 <sup>1</sup>	621 <sup>1</sup>	417 <sup>1</sup>	15.9	0.63
4 / 13.12	1.512 <sup>1</sup>	154 <sup>1</sup>	104 <sup>1</sup>	22.9	0.90	4.864 <sup>2</sup>	496 <sup>2</sup>	333 <sup>2</sup>	29.6	1.17
5 / 16.4	942 <sup>2</sup>	96 <sup>2</sup>	65 <sup>2</sup>	34.6	1.36	3.139 <sup>2</sup>	320 <sup>2</sup>	215 <sup>2</sup>	37.1	1.46
6 / 19.69	544 <sup>2</sup>	55 <sup>2</sup>	37 <sup>2</sup>	41.8	1.65	2.77 <sup>2</sup>	222 <sup>2</sup>	149 <sup>2</sup>	44.8	1.76

<sup>1</sup>Limited by the maximum allowable shear load on the positioning block.

<sup>2</sup>Limited by the connection.

- UDL: Uniform distributed load.
- CPL: Center point load.
- Loading table only valid for static loads.
- Loading table only valid for single spans with support at both end.
- The self-weight of the profile is already taken into account.
- Loading table is calculated according and in compliance with the European standard (Eurocode EN1990).
- Loading table excluding frequent use factor.
- Loading table & deflections are based on good assembled and aligned connectors.

### Profile clamped (with 90° connector and support block): with 180° connector (multiple profiles)



Load limits and displacements:

Length (m) / (ft)	UDL					CPL				
	(N/m)	(kg/m)	(lbf/ft)	(mm)	(in)	(N)	(kg)	(lbf)	(mm)	(in)
6 / 19.69	212	21.6	14.5	5.2	0.20	850	86.6	58.2	7.3	0.29
9 / 29.53	62	6.3	4.2	10.2	0.40	376	38.3	25.8	12.9	0.51



# beTruss

## The body

beTruss allows you to build **stands of any size**, no matter how big, with one single (stand construction) system. No more breaking a sweat over mounting points! From now on, you can erect your load bearing stand with ease, in no time at all.

Identical to the b62 frame system, all dimensions are based on **62 × 62 mm**, so perfectly usable with existing frames thanks to the especially designed load bearing connector.

beTruss has the same **modular beMatrix DNA** and therefore all its benefits:

- 62 mm dimensions and D30 holes, enabling a perfect integration with the existing beMatrix range (frames, LEDskin®, lightboxes, etc).
- Both panels and textile can be attached to the b310 range, allowing the entire stand to get the same finish.
- Your stand design will be ready in no time. All necessary components are waiting for you in the beMatrix library, ready to start.
- But most of all: the built-up will be fast and simple, since you will only need one system to set up the entire structure.







bEMatrix  
NEW  
CARBON FOOTPRINT  
CALCULATOR

CO<sub>2</sub>  
**GREENER**

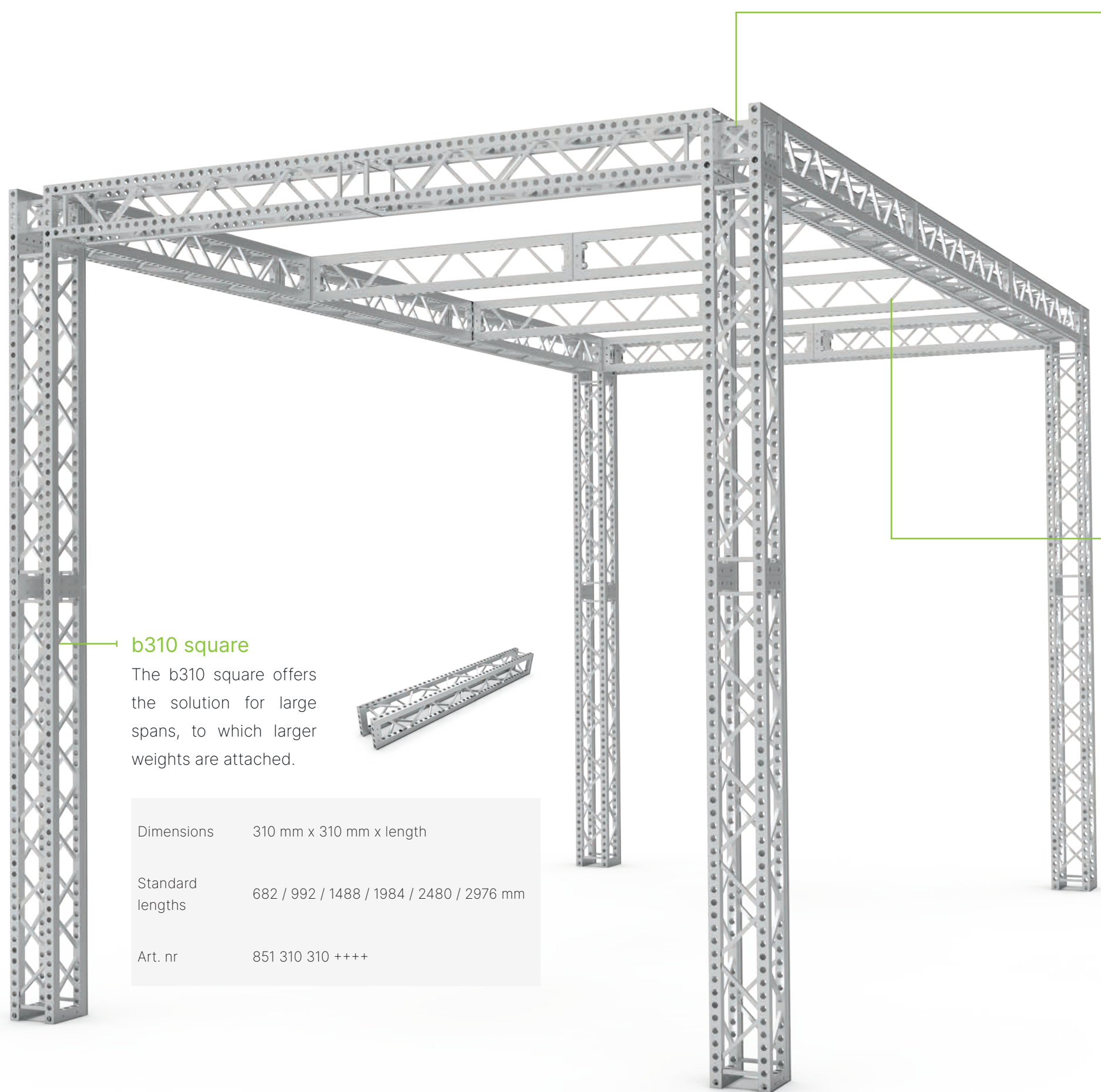
CALCULATE THE CARBON FOOTPRINT  
OF YOUR STAND STRUCTURE  
AND FINISHING MATERIALS.  
MAKE A DIFFERENCE.

bEMatrix  
NEW CONNECTIONS  
CONNECTORS

PATENT PENDING

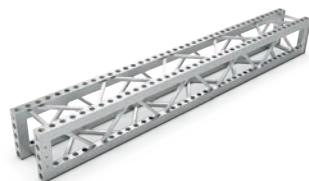
UP TO TWICE AS FAST  
TO ASSEMBLE. SAVE MONEY  
AND TIME.





**b310 square**

The b310 square offers the solution for large spans, to which larger weights are attached.

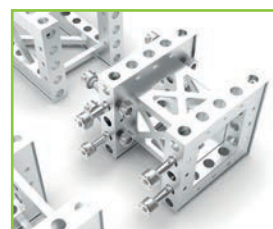
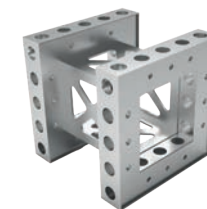


Dimensions	310 mm x 310 mm x length
Standard lengths	682 / 992 / 1488 / 1984 / 2480 / 2976 mm
Art. nr	851 310 310 +++++

**b310 corner piece**

Corners and cross connections are made using the b310 corner piece. The connection of the corner piece is done by means of two toolless connectors for large or small holes.

Dimensions	310 mm x 310 mm x 310 mm
Art. nr	852 310 310 310



**b310 180° connector**



**b310 90° connector**

**b310 frame**

The b310 frame is designed to provide the necessary bearing capacity to the structure, within the same 62 x 62 mm dimensions, where the strength of the b62 frame is insufficient.

Dimensions	62 mm x 310 mm x length
Standard lengths	682 / 992 / 1488 / 1984 / 2480 / 2976 mm
Art. nr	850 62 310 +++++



**b310 180° connector with automatic locking system**







## The skin

### LEDskin®

beTruss is compatible with the full beMatrix range. It is therefore no surprise that LEDskin® can perfectly be integrated to the structure.



### Panel

The b310 range can be finished with 3mm thick panels.

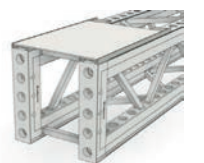


### Seamless textile

For a seamless result, you can cover the sides with textile.



The b310 square & b310 corner piece can be fully finished with panels and textile by using the perfect cover on 2 of the 4 sides.







 **beMatrix**  
re!nventing exhibit building systems

 **beMatrix**  
re!nventing exhibit building systems



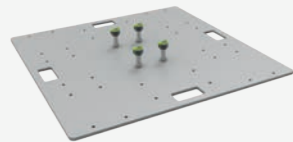
## The add-ons



**Baseplate**  
(use to compensate height difference)

Art. nr

901 28 0706



**Baseplate**  
(use as a standalone for extra stability)

Art. nr

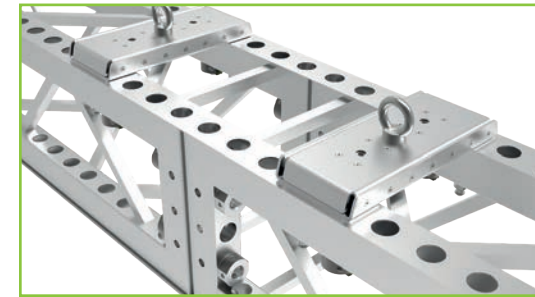
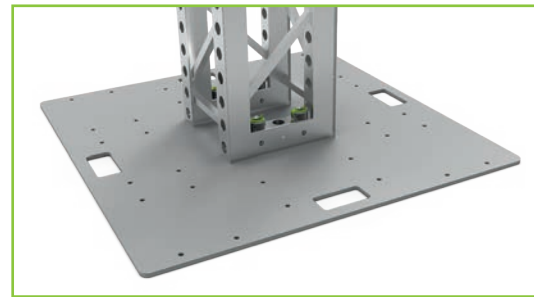
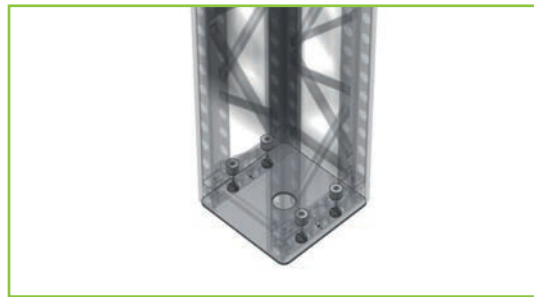
901 28 0707



**Hanging bracket**  
(b310 square)

Art. nr

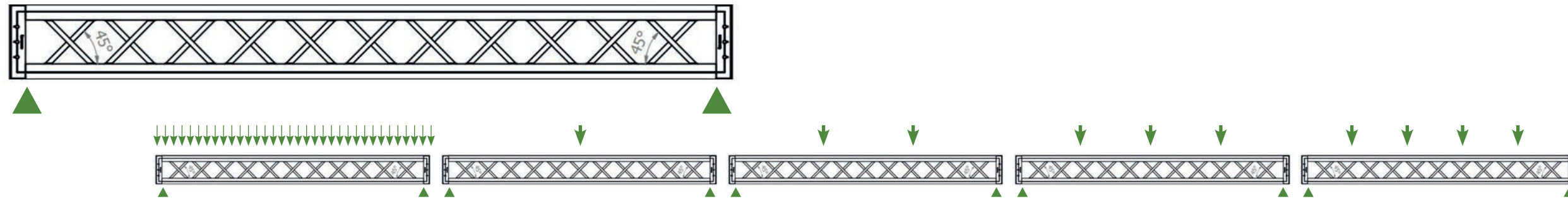
901 28 0704





## The target load tables

### b310 square, direction 1



SPAN (m)	UDL (kg/m)	Deflection (mm)	CPL (kg)	Deflection (mm)	TPL (kg)	Deflection (mm)	QPL (kg)	Deflection (mm)	FPL (kg)	Deflection (mm)
3	385.0	2.43	923.3	3.56	560.1	3.27	385.0	3.27	288.7	3.07
4	286.9	7.08	808.1	7.45	505.9	7.76	382.5	8.04	286.9	7.95
5	228.1	11.73	703.1	11.34	455.4	12.24	347.6	12.80	272.6	12.83
6	188.9	16.37	608.2	15.23	408.8	16.72	306.1	17.57	243.6	17.70
7	160.6	24.33	523.6	20.84	365.8	24.41	268.6	24.84	216.9	25.49
8	120.2	32.29	449.2	26.45	326.7	32.09	235.2	32.12	192.4	33.28
9	93.0	40.25	384.9	32.06	291.3	39.78	205.8	39.39	170.3	41.07
10	74.0	50.85	330.9	39.67	259.6	50.32	180.4	48.96	150.5	51.20
11	60.2	61.45	287.0	47.28	231.8	60.86	159.1	58.53	132.9	61.34
12	48.8	72.06	253.3	54.89	207.7	71.40	141.8	68.09	117.7	71.48
13	41.9	86.74	229.8	68.92	187.3	85.57	128.6	83.68	104.8	84.50
14	35.6	101.4	216.6	82.95	170.7	99.75	119.3	99.26	94.1	97.53
15	30.7	116.1	213.5	96.98	157.9	113.9	114.1	114.8	85.8	110.6

#### Excluding frequent Use factor (0.85)

UDL: Uniform distributed load / CPL: Center point load / TPL: Tripple point load / QPL: Quarter point load / FPL: Fifthpoint load

- Loading table only valid for static loads
- Loading table only valid for single spans with support at both ends.
- The self weight of the truss is already taken into account
- Loading table are calculated according and in compliance with to European standard (Eurocode EN1990)
- Loading table excluding frequent use factor
- Truss spans can be assembled from different truss lengths
- Loading table & defelections are based on good assembled and aligned connectors
- All static stsystems other than single spans need an individual structural calculation.  
Please contact a structural engineer or beMatrix for assistance.

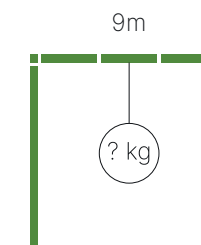
### Example

What is the maximum weight & deflection in the middle of the beTruss at a span of 9m?

$$= 384,9\text{kg} \times \text{safety factor } 0,85$$

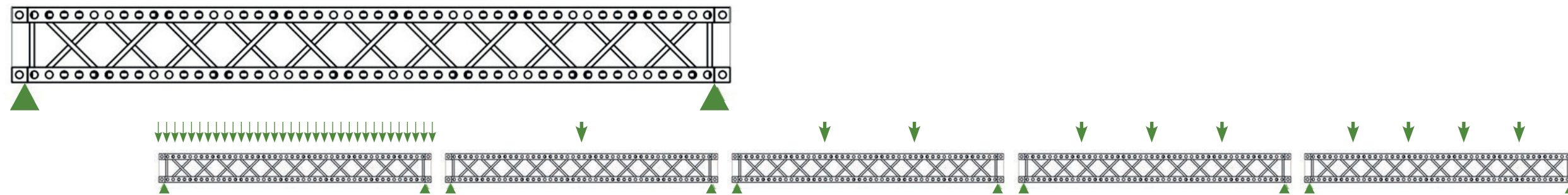
$$= 327,2\text{kg with a deflection of } 32,06\text{mm}$$

Less deflection thanks to the use of beTruss.





**b310 square, direction 2**



SPAN (m)	UDL (kg/m)	Deflection (mm)	CPL (kg)	Deflection (mm)	TPL (kg)	Deflection (mm)	QPL (kg)	Deflection (mm)	FPL (kg)	Deflection (mm)
3	149.7	1.17	419.3	1.93	218.2	1.58	149.7	1.61	112.2	1.54
4	110.4	3.12	335.7	3.46	194.5	3.58	147.3	3.90	110.4	4.04
5	86.9	5.07	268.0	4.98	172.4	5.59	132.5	6.19	103.9	6.53
6	71.2	7.01	213.8	6.50	151.8	7.59	114.7	8.49	91.4	9.03
7	60.0	10.82	170.9	8.82	132.7	11.45	98.4	12.48	79.8	13.49
8	47.1	14.63	137.4	11.14	115.1	15.30	83.7	16.48	69.1	17.94
9	35.9	18.43	111.3	13.46	99.0	19.16	70.7	20.48	59.3	22.40
10	27.2	22.60	90.9	17.39	84.4	25.08	59.2	27.02	50.4	29.68
11	20.7	26.78	74.5	21.32	71.3	31.01	49.4	33.57	42.5	36.97
12	16.0	30.95	60.9	25.25	59.7	36.94	41.2	40.11	35.4	44.25
13	12.6	37.01	48.6	30.69	49.6	45.64	34.5	50.39	29.3	54.48
14	10.0	43.08	36.6	36.12	41.0	54.35	29.5	60.67	24.0	64.70
15	8.0	49.15	23.7	41.56	33.9	63.05	26.2	70.96	19.7	74.93

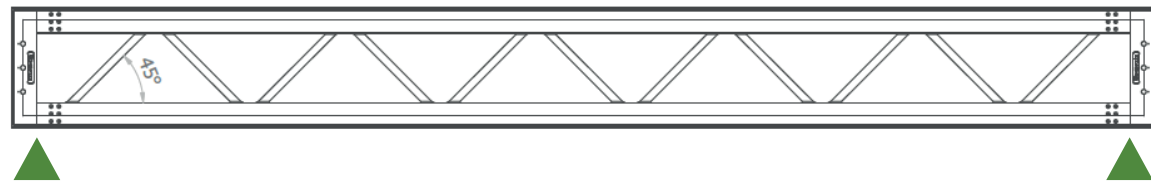
**Excluding frequent Use factor (0.85)**

UDL: Uniform distributed load / CPL: Center point load / TPL: Tripple point load / QPL: Quarter point load / FPL: Fifthpoint load

- Loading table only valid for static loads
- Loading table only valid for single spans with support at both ends.
- The self weight of the truss is already taken into account
- Loading table are calculated according and in compliance with to European standard (Eurocode EN1990)
- Loading table excluding frequent use factor
- Truss spans can be assembled from different truss lengths
- Loading table & defelections are based on good assembled and aligned connectors
- All static stystems other than single spans need an individual structural calculation.  
Please contact a structural engineer or beMatrix for assistance.



## b310 frame



span (m)	UDL (kg/m)	deflection (mm)	cpl (kg)	deflection (mm)
1	716.7	0.5	716.7	1.0
2	356.8	1.2	453.7	1.5
3	138.3	1.8	245.8	1.9
4	70.5	2.9	159.2	2.9
5	41.7	4.1	113.6	3.8
6	27.2	5.2	86.2	4.8
7	19.0	7.2	68.3	6.4
8	13.9	9.2	55.8	8.1
9	10.5	11.2	46.7	9.8
10	8.2	14.8	39.8	12.9
11	6.6	18.4	34.6	15.9
12	5.4	22.0	30.3	19.0

### Excluding frequent Use factor (0.85)

UDL: Uniform distributed load / CPL: Center point load

- Loading table only valid for static loads
- Loading table only valid for single spans with support at both ends.
- The self weight of the truss is already taken into account
- Loading table are calculated according and in compliance with to European standard (Eurocode EN1990)
- Loading table excluding frequent use factor
- Truss spans can be assembled from different truss lengths
- Loading table & defections are based on good assembled and aligned connectors
- All static stystems other than single spans need an individual structural calculation.  
Please contact a structural engineer or beMatrix for assistance.





# Double Deck

A second floor really allows you to get everything out of your stand's surface. beMatrix' Double Deck system doesn't only increase the number of square footage, but is also **wholly compatible with existing product ranges** (frames, LEDskin®, lightboxes, etc.), easy to integrate and to finish with the beMatrix frame system. That way, the structure and look and feel of your stand totally come together! beMatrix provides all the support you need to set up your stand.

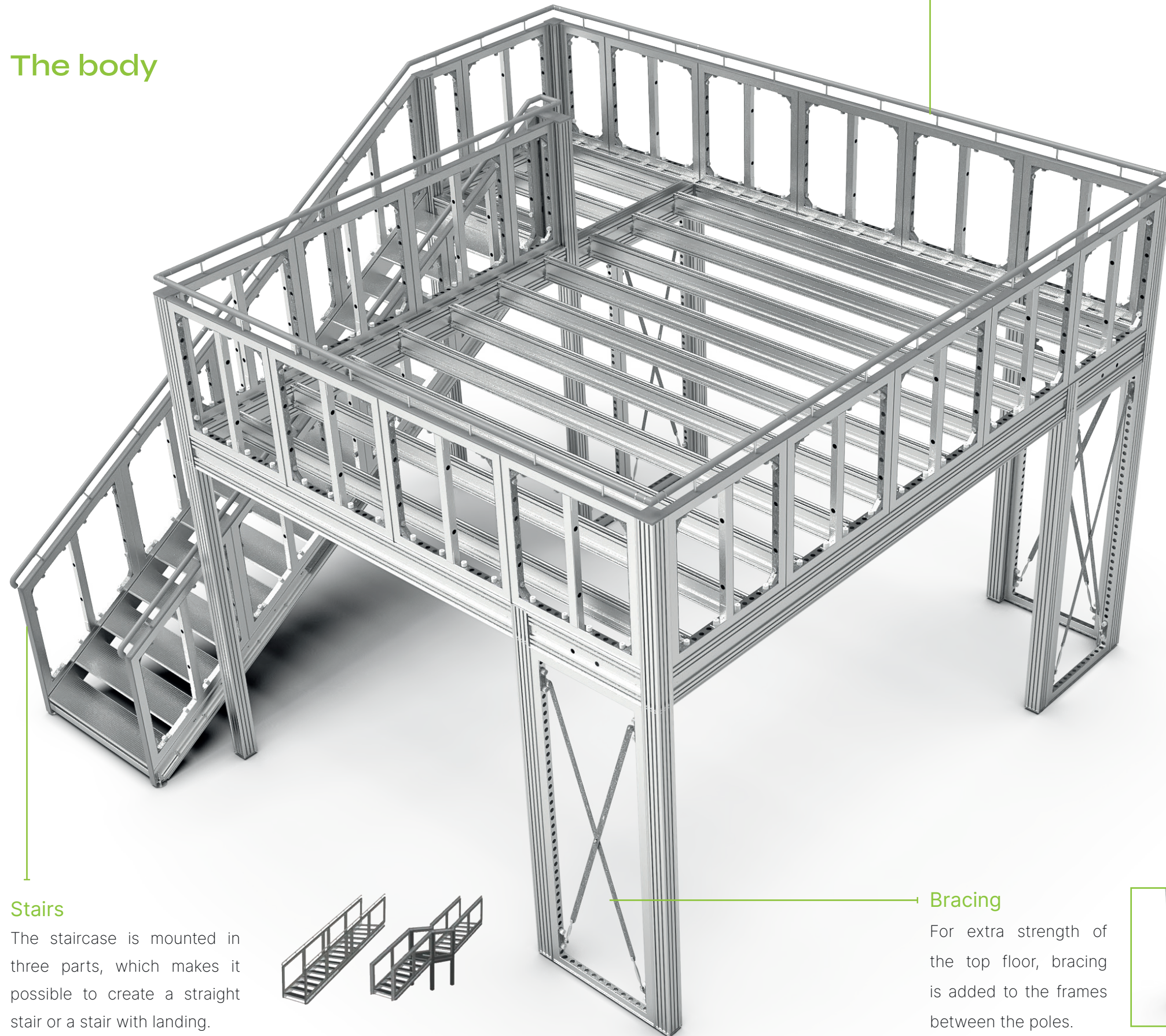
The Double Deck structure can be **finished with both panels and textile**, allowing the entire stand to get the same finish.

Stability, safety as well as perfect aesthetic integration are equally important. We will make sure your stand looks impeccable and is compliant with all rules and regulations.





## The body



### Railing

Standard b62 frames are used as railing. Reinforcement brackets are mounted in every corner of the frames for support. A rounded cover and stainless steel handrail are added on top of the frames.



### Optional:

We offer a glass railing solution (excl. the glass itself) to spice up your Double Deck. This railing consists of a U-profile that you attach with connectors. The glass can be put onto the U-profile.



### Structure

A Double Deck is created with primary & secondary beams and poles. They can easily be connected as it is based on a coupling system avoiding the time consuming fastening of bolts and nuts.

PRIMARY BEAM



SECONDARY BEAM



POLE



### Stairs

The staircase is mounted in three parts, which makes it possible to create a straight stair or a stair with landing.



### Bracing

For extra strength of the top floor, bracing is added to the frames between the poles.

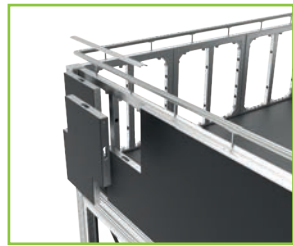




## The skin

### Finishing the railing

LEDskin® tiles, lightboxes, higher frames, ... can also be placed in front of the railing, which is set back slightly for this.

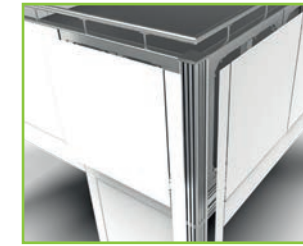


### Stair

Both the railing and sides of the staircase can be finished with panels.

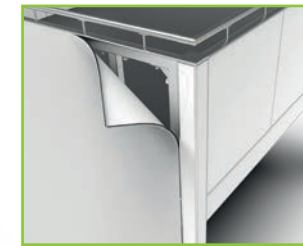
### Panel

The Double Deck structure can be finished with 3mm thick panels.



### Seamless textile

The frames of the Double Deck can be finished with a textile for a seamless result.



### Get inspired!



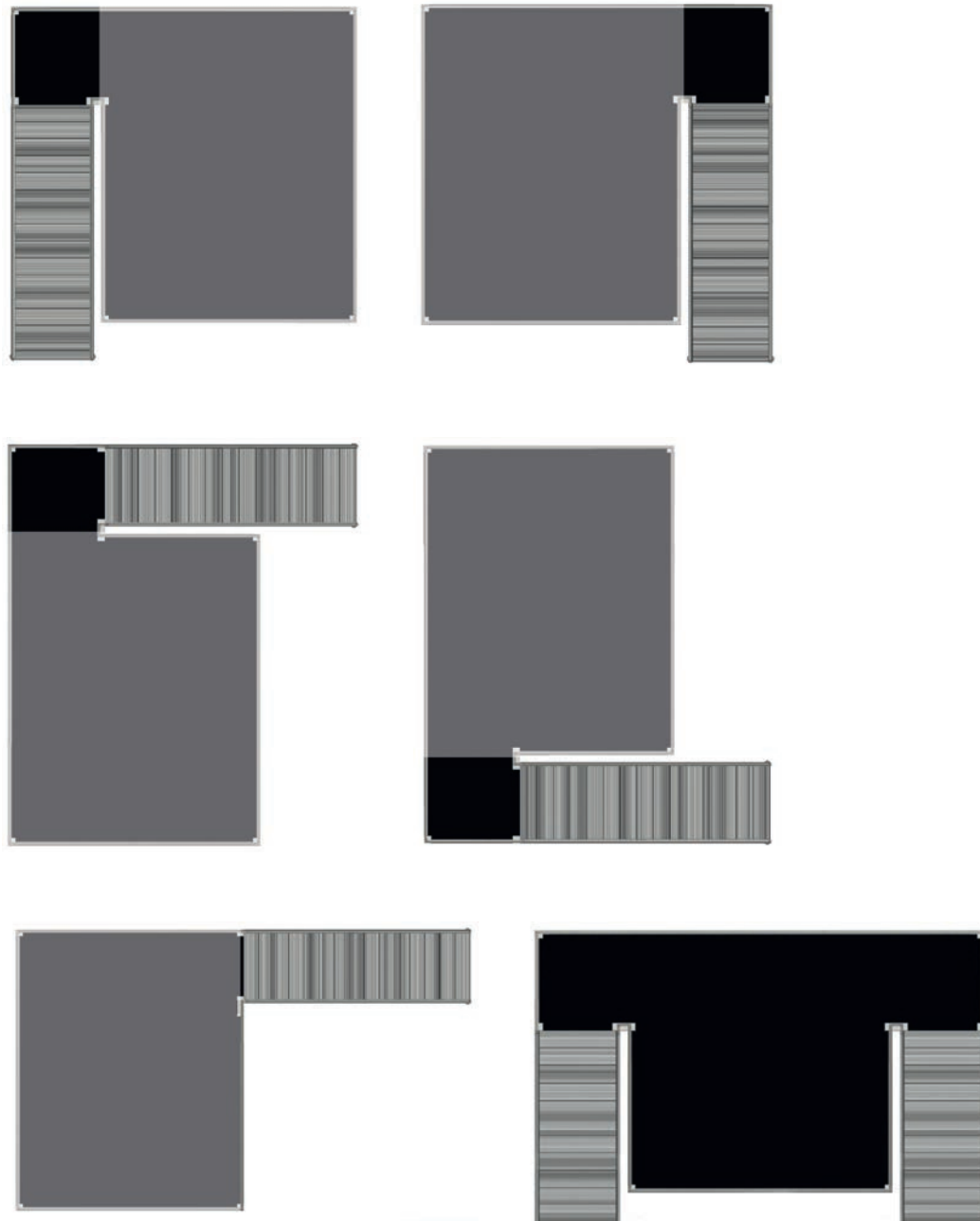






## The stairs

The stairs can be placed on every corner of your floor. Below you will find a visual representation of the various options.



## Landing platform



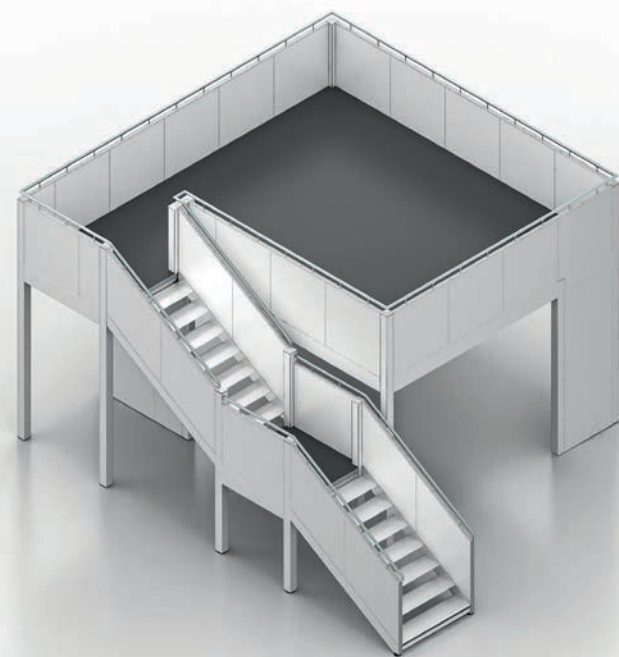
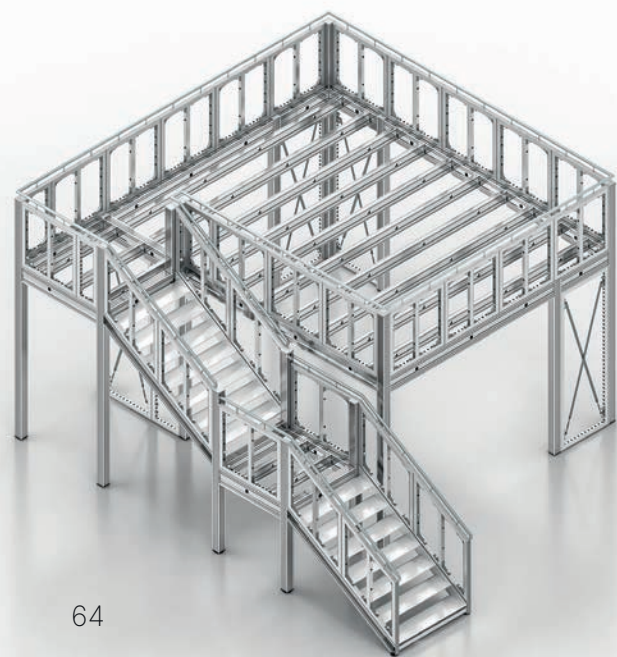
## Cover bottom of the stairs

This can be purchased as a set of custom-made b62 frames and parts to close the bottom of the stairs of the Double Deck.

SET FRAMES UNDER STAIR 839 000







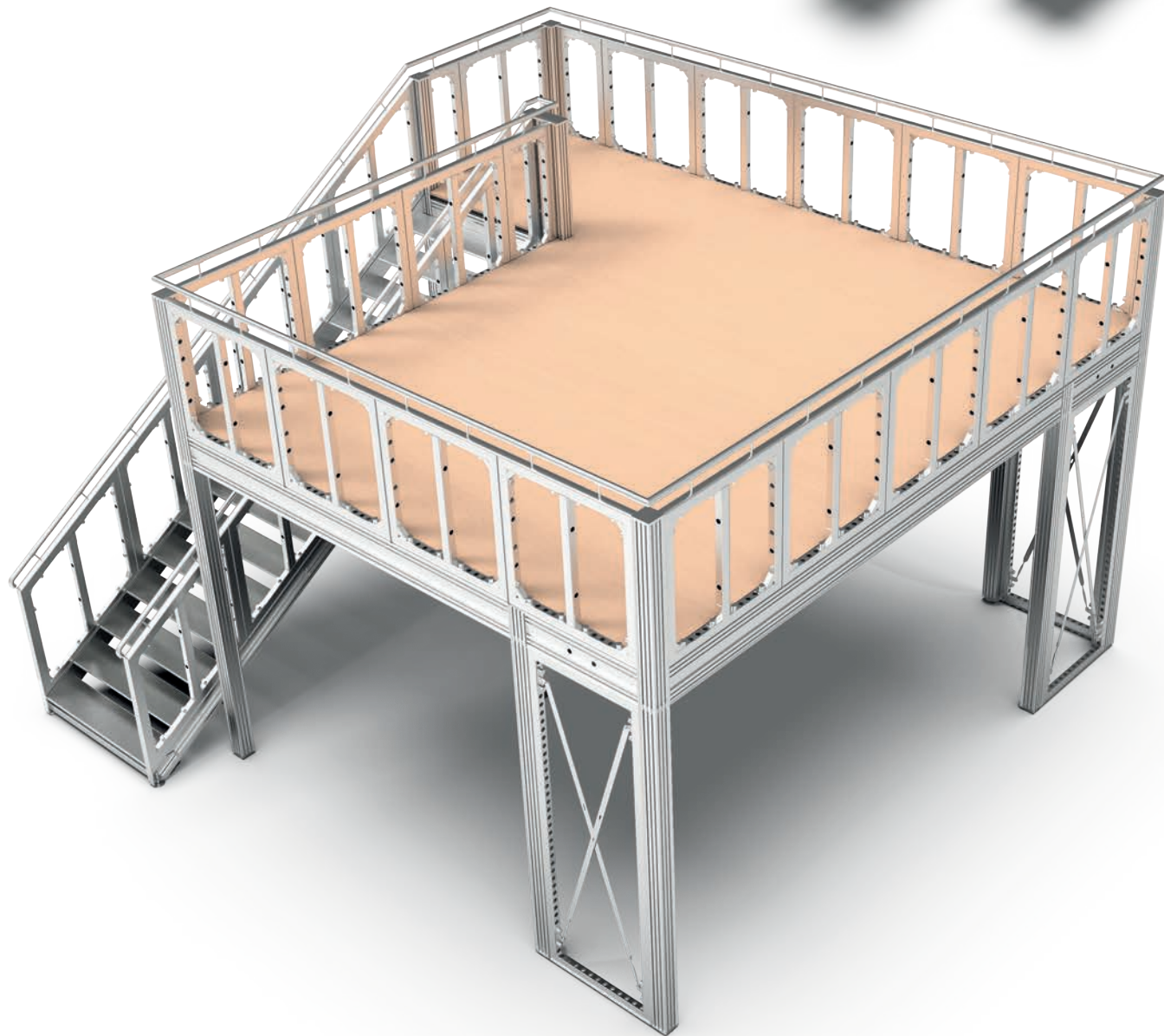
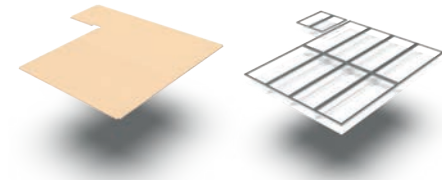






## The finish

The finishing of floor and ceiling is not provided in the Double Deck modules. For the floor, **minimum 22 mm chipboard** must be provided. Standard b62 frames can be mounted underneath to make a ceiling. You can even close off the lower part with frames to have an extra meeting space.





## The add-ons

Optional to the Double Deck, we offer two possibilities to transport the profiles with ease:

### Steel trolley

This complete steel trolley can be used to stack the beams and poles. The staircase cannot be put on the trolley. We recommend to transport this on a pallet.



**Double Deck  
trolley**

Art. nr

990 60 37

### Profile separator & bottom support

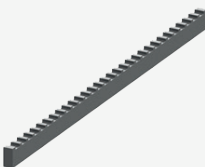
If you want to build your own case for transportation; you can do so with these products.



**Profile  
separator**

Art. nr

990 60 37 01



**Bottom  
support**

Art. nr

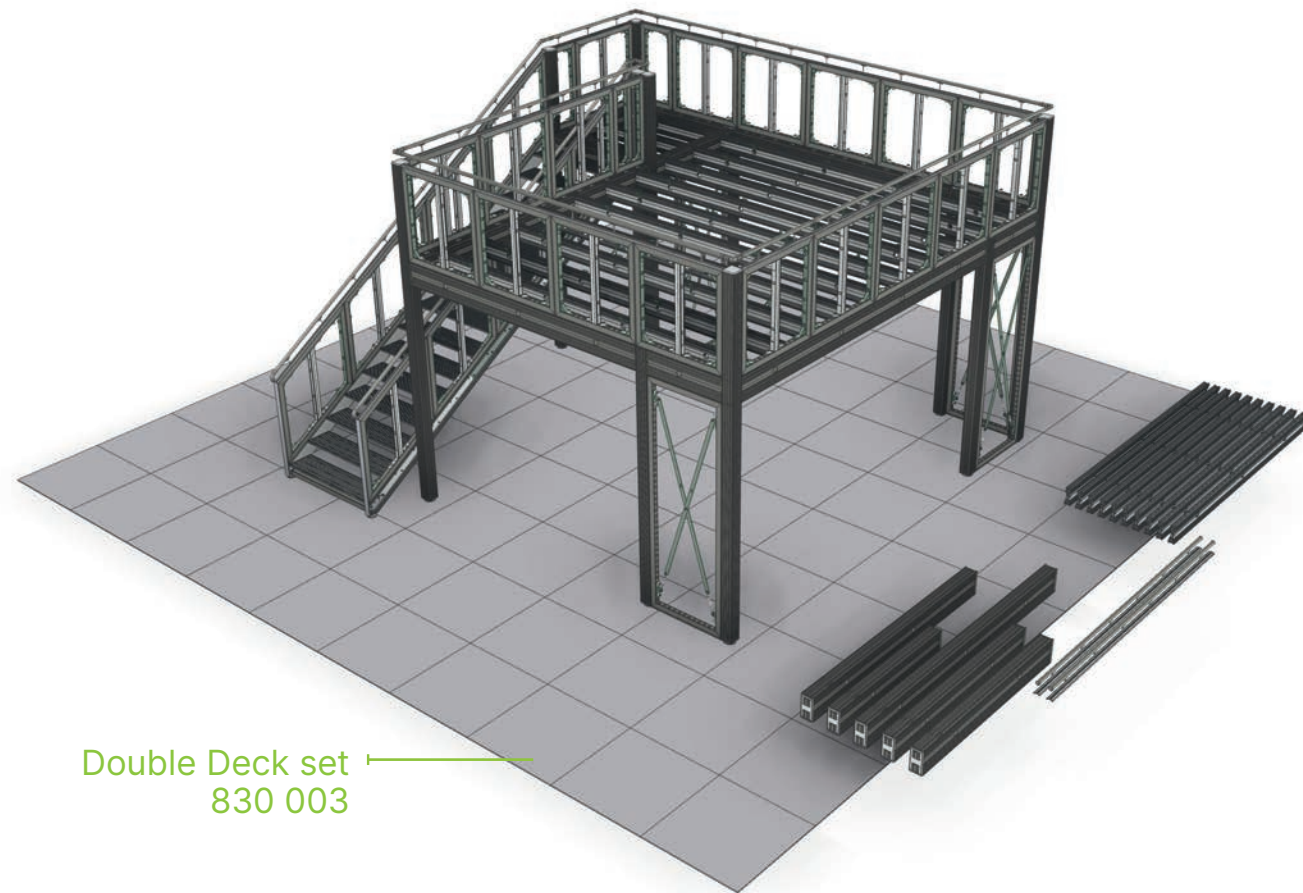
990 60 37 02





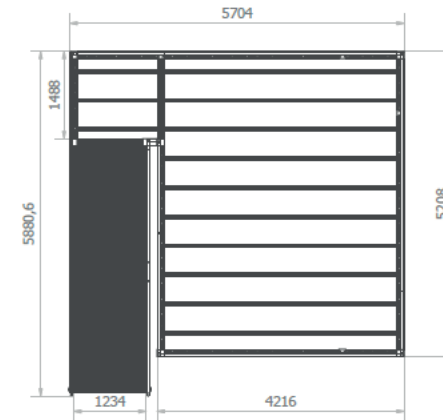
## The set

Profiles, poles, beams, floor brackets, staircases and railings: we offer you entire modules which you can easily add to your stand design. With the **Double Deck set 830 003** you can create up to six different configurations. Other configurations on request, please contact us for more information.

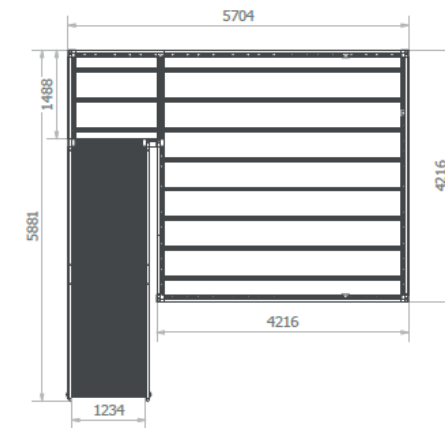


To transport the profiles of the set 830 003, you need two trolleys 990 60 37.

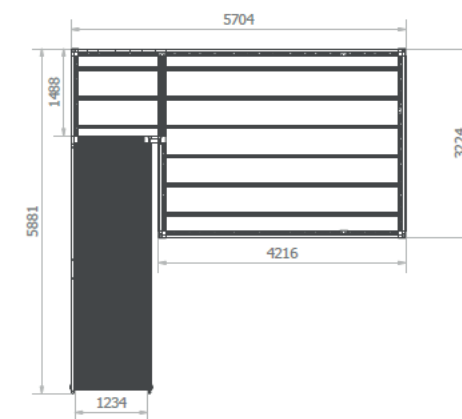
### Configuration 1



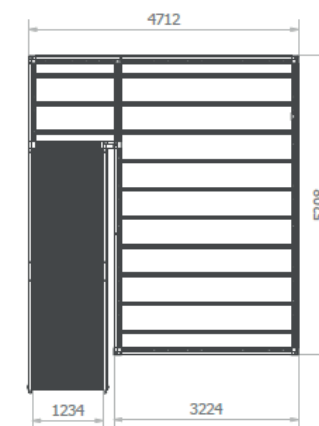
### Configuration 2



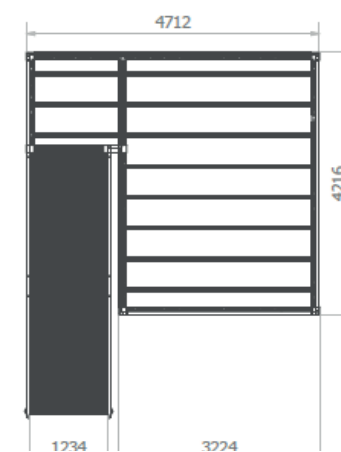
### Configuration 3



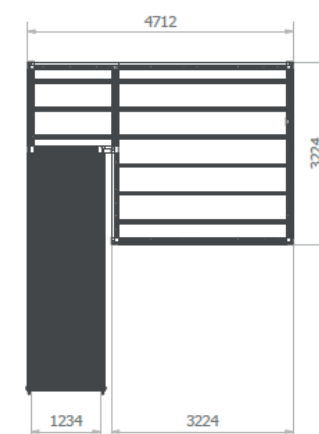
### Configuration 4



### Configuration 5

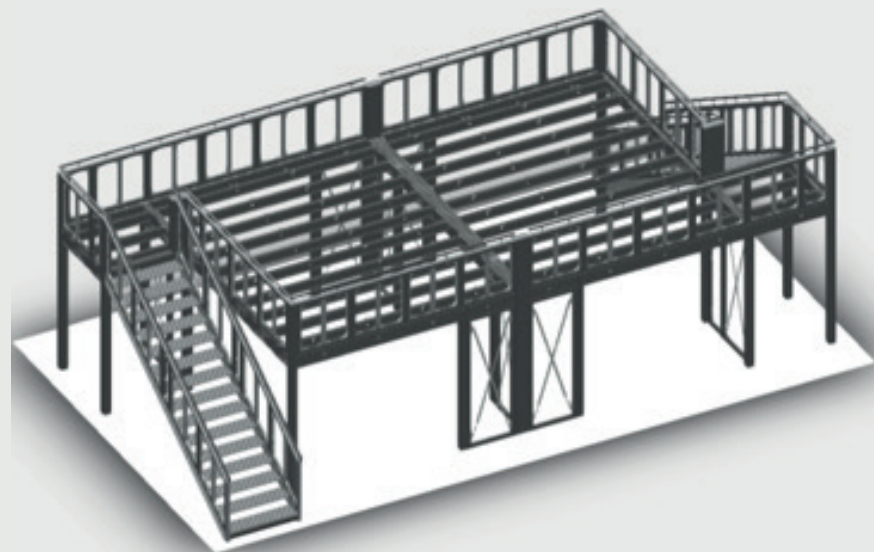
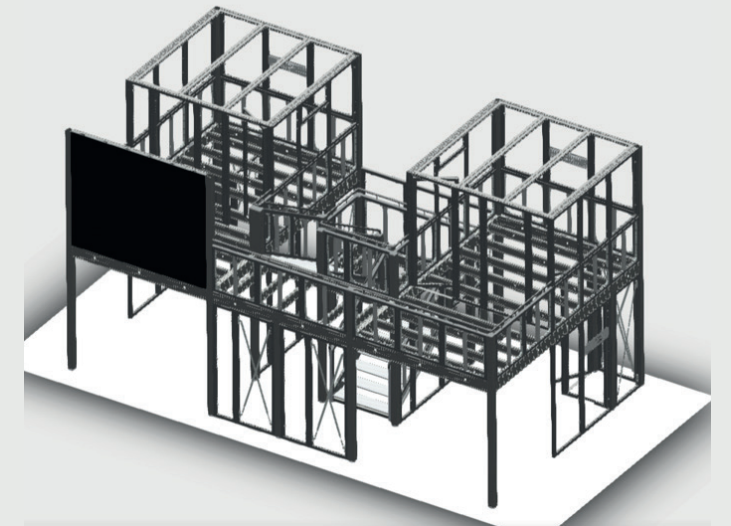
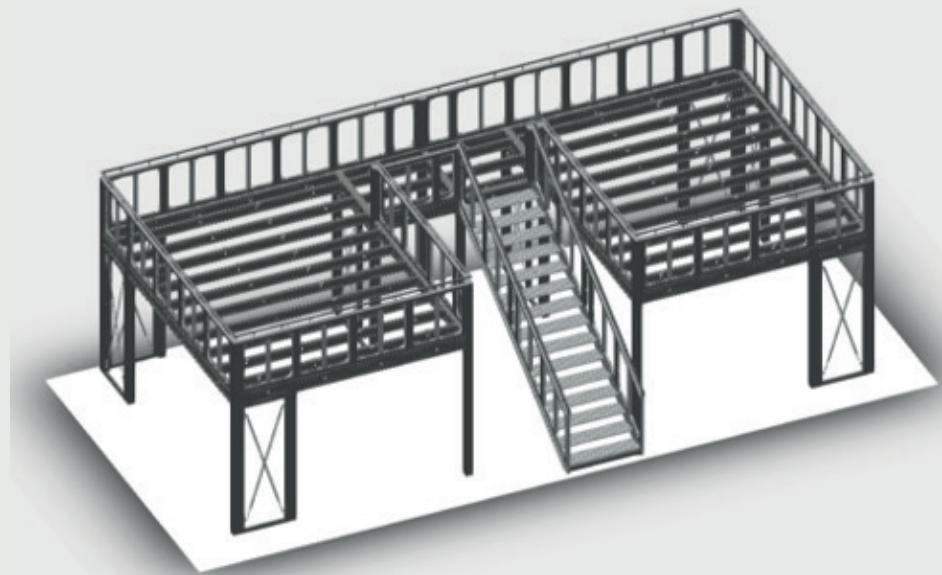


### Configuration 6





Combine our sets for an outstanding result!







# Support Tools





### **beMatrix, your reliable partner**

Before, during and even after the completion of your project, beMatrix is always at your service. beMatrix clients can rely on an extensive and innovative product range, creativity that manifests itself in inventive design, thorough technical and commercial support, flexible delivery times and all the benefits of a strong, cohesive international sales network.





# Logistics

The aluminium frame system is lightweight, hence very ergonomic and eco-friendly: no need for the stand builder to carry around heavy structures, while **transport weight and CO2 emissions remain low.**

beMatrix also helps with the transportation from departure to arrival, including any customs formalities.





# MybeMatrix

## Technical leaflets & 3Ds

In MybeMatrix you have access to all our "how-to's" and technical leaflets with step by step guides.

3Ds show more than images.  
Get full access to the 3D library!



## beMasters

Our international network of exhibition builders.

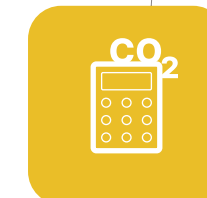
## beCAD

Create, control and calculate your beMatrix project with beCAD.  
Completely free, all-in-one online tool loved by exhibition designers.



## CO2 Calculator

Calculate your stand's carbon footprint and stand out from your competitors.



## Training

Our events are the perfect opportunity to discover the versatility of the frame system and to get a unique glimpse behind the scenes of beMatrix.



## bePartner network

We collaborate with a few select partners/suppliers for specific services. These partners have been hand-picked and they are audited annually!



## Kontainer

A wide selection of projects for you to become acquainted with beMatrix products, services and the endless possibilities of our system.



# Global Rental Network

The Global Rental Network is a **network of service centres** holding a large range of beMatrix products, **spread all over Europe, the UK and the USA**. Thanks to this network, you do not have to ship your beMatrix stock between locations, but you can use the large stock available locally. Moreover, the availability of frames is almost unlimited, even allowing you to build exceptionally large projects.



## EU Locations


+ US Locations: Atlanta & Las Vegas

We offer two different renting options at a favourable price and, maybe even more interesting, the possibility to spread the cost of your beMatrix project.

**Short-term** renting has a typical run time of 1 day to 6 months. **Long-term** renting has a minimal run time of 6 months with a minimum of 50 frames. Both rental plans can also be combined, to meet your specific needs.



 Start exploring the Global Rental Network on our [website](#).



## Benefits of our Global Rental Network

- Short-term or long-term rental (or combine both)
- Large local stock
- Local showroom near to you
- Technical advice and excellent service
- Test builds possible
- No extra storage space needed



# Contact



## beMatrix HQ, Belgium

Head office | Rental & Service Center

Wijnendalestraat 174  
8800 Roeselare  
Belgium

+32 51 20 07 50  
rental-belgium@beMatrix.com



## beMatrix Scandinavia

Rental & Service Center

Idögatan 55  
582 78 Linköping  
Sweden

+46 727 28 34 54  
m.hammarberg@beMatrix.com



## beMatrix Germany

Rental & Service Center

Benzstraße 14  
35799 Merenberg  
Germany

+49 171 35 44 014  
k.stegmaier@beMatrix.com



## beMatrix USA

Office | Production | Rental & Service Center

4476 Park Drive  
Norcross, GA 30093  
United States

+770 225 0552  
t.ericson@beMatrix.us



## beMatrix UK

Rental & Service Center

Unit 2 Lobb Farm, London Road  
Tetsworth Thame OX9 7BE  
United Kingdom

+44 1844 28 10 85  
a.burton@beMatrix.com



## beMatrix France

Rental & Service Center

Le Parc de l'Événement  
1, Allée d'Effiat, 91160 Longjumeau  
France

+33 614 51 57 15  
d.breitschaft@beMatrix.com



## beMatrix Italy

Rental & Service Center

ABS Group  
Via F. Marinotti 45  
31029 Vittorio Veneto TV  
Italy

+39 3453 65 69 32  
g.grando@beMatrix.com



## beMatrix Las Vegas

Rental & Service Center

7900 W Sunset Rd  
89119 Las Vegas  
United States

+1 702 807 2508  
customerservice@beMatrix.com



## beMatrix The Netherlands

Rental & Service Center

Uilenwaard 6  
5236 WB 's-Hertogenbosch  
The Netherlands

+31 640 74 66 51  
e.stadhouders@bematrix.com



## beMatrix Poland

Rental & Service Center

św. Michała 100  
61-005 Poznań  
Poland

+48 513 18 00 99  
l.checinski@beMatrix.com



## beMatrix Spain

Rental & Service Center

Base3  
C. Torrent Tortuguer 42-52  
08210 Barberà del Vallès  
Spain

+34 93 719 09 00  
rental-spain@beMatrix.com





beMatrix



beMatrix



WELCOME TO

Luminati  
PROJECT CASES

PROJECT LUMINATI





BETTER

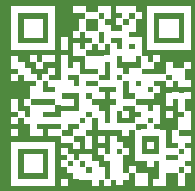
FASTER





We love our customers...

and their projects! Scan this QR code and scroll through some amazing realisations. Exhibits, events, retail, showrooms, pop-ups... all with beMatrix!







floorify  
RIGID VINYL  
PLANKS & TILES

floorify  
RIGID VINYL  
PLANKS & TILES



**More to discover!**

Get to know our full Electronics, Xtreme Solutions and Outdoor range in the brochures on [www.beMatrix.com](http://www.beMatrix.com) or scan the QR code.















**be strong**  **be stylish**  
be anything.

**Come say hi**

HQ Belgium  
Wijnendalestraat 174  
8800 Roeselare

**get in touch**

+32 (0)51 20 07 50  
info@beMatrix.com

**or boost your inspiration**

www.beMatrix.com  
socials @beMatrix

**f in**   