





The leading system for easy and sustainable event building.

<b>Easy &amp; sustainable event building</b>	<b>4</b>
<b>b62®</b>	<b>6</b>
<b>Why beMatrix</b>	<b>7</b>
<b>LEDskin®</b>	<b>12</b>
LEDskin® P1.5	18
LEDskin® P1.9	21
LEDskin® P2.5	22
LEDskin® P2.5 Outdoor	25
LEDskin® product features	26
<b>75" beTV</b>	<b>36</b>
<b>Lightbox</b>	<b>42</b>
62s sideLED lightbox	44
124D sideLED lightbox	46
186D sideLED lightbox	48
Lightbox extensions	50
<b>LightLine</b>	<b>56</b>
Cover LightLine	56
Profile LightLine	57
<b>SAM Light</b>	<b>60</b>
<b>BIG SAM Light</b>	<b>66</b>
<b>Track Light System</b>	<b>70</b>
<b>BIG Light</b>	<b>77</b>
<b>Logistics</b>	<b>83</b>
<b>Global Rental Network</b>	<b>86</b>
<b>Contact</b>	<b>88</b>

# Easy & sustainable event building

beMatrix is the true heir and Belgian manufacturer of the original frame system with big holes, launched in 1993. beMatrix positively changes the event industry with a higher convenience and return for customers in a sustainable manner.



## Our mission is to be the leading system for easy and sustainable event building.

The beMatrix system opens endless possibilities for event builders and exhibitors in different types of constructions such as exhibition stands, congress walls, indoor and outdoor events and pop-ups.



## A sustainable step forward: frames with ECO+ finish.

beMatrix introduced the ECO frame as an ecological alternative to the anodised frame. Anodising is a very chemical surface treatment that pollutes the environment. We invented a brushing technique that gives the same look and is not harmful.



Do you want more information about how we positively impact the environment? Read our **Sustainability Charter** on [www.beMatrix.com](http://www.beMatrix.com).

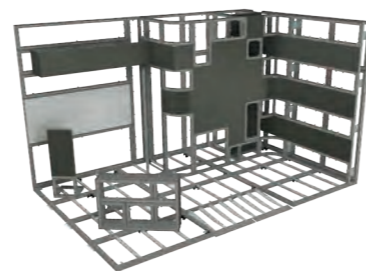


# b62®



All dimensions of the b62® frame system have been based on the perfect **62 × 62 mm matrix**. The width, length and height of the constructions are always multiples of 62.

The 62 mm matrix delivers the ultimate **modularity** with countless configuration options.



# Why beMatrix

## Fast & easy design and build-up

Faster and easier than assembling a traditional profile-based system, light weight and no tools needed!

## High return on investment

The same frame can be used for walls, ceilings and floors. Since assembly is quick and easy, labour costs can be cut.

## Sustainable system

Frames can be reused over and over again. They are also recyclable with minimal energy and without any loss of quality.

## International network

There is always someone around who can assist you in the beMatrix network; beMatrix operates worldwide.

## Local service and stock close to you

We have rental and service centres worldwide to support you with rental equipment, training or build-up support .

Bring your stand to life with the beMatrix Electronics. Discover our fully integrable **LEDskin®** and **beTV**, the beMatrix solutions for integrating visuals into your construction. In addition, they are easy to set up without many tools, just like our frames.

Light up your booth thanks to our **lighting solutions** SAM, BIG SAM, Big Light and many more. They are especially designed to put the essentials of your booth in the spotlight and help you tell a story. Our Sideled Lightbox could be the eyecatcher of your design as a freestanding object or completely integrated, which is the strength of beMatrix. Let's bring some glam to your design!



 beMatrix®

**BETTER  
FASTER  
STRONGER  
GREENER**

LIGHT BOX  
Depth of Choice

**LED SKIN 15**

LED SKIN 15

LED SKIN 15 LED SKIN 15 LED SKIN 15



**FASTER**

FAST CLAMP

**GOOD  
DESIGN**

Awarded by The Chicago Athenaeum  
Museum of Architecture and Design



beltruss  
beltruss allows you to  
create builds of nearly  
any size. Completely

**LED SKIN®**

## PATENTED DESIGN

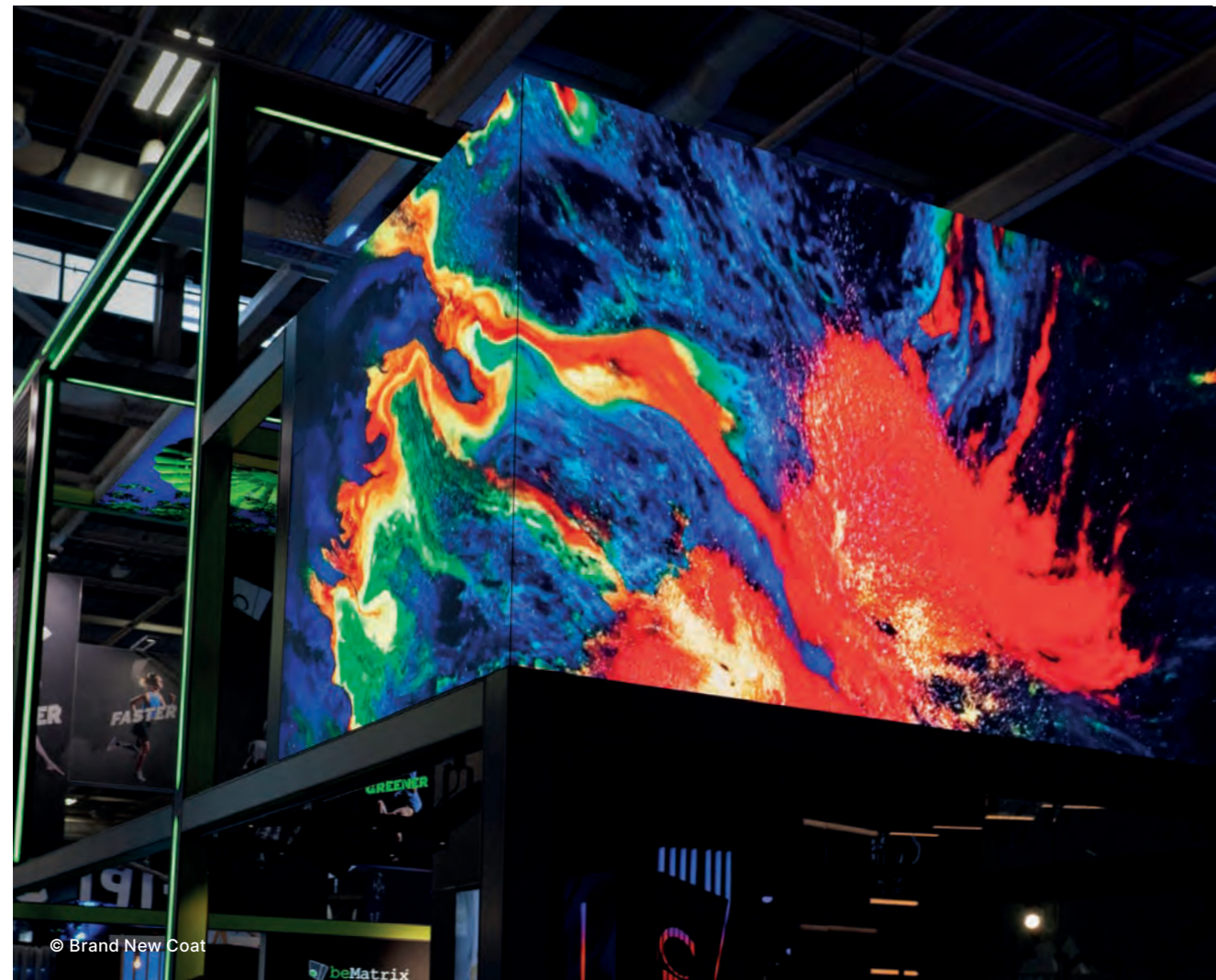
# LEDskin®

### Animation, motion and great feeling

LEDskin® transforms your beMatrix stand into a real **hotspot**, full of animation and motion, so your stand becomes a true **experience**. With LEDskin®, beMatrix keeps on revolutionising stand building. In the blink of an eye you can combine LED cabinets and frames to create an impressive animated display, which can be seamlessly **integrated** into your new or existing beMatrix stand. No more individual screens, which in fact in many cases are more of a disruptive element than added value in a sleek stand design. Also, you are no longer limited to the maximum (standard) dimensions of individual screens. Instead, you can turn the whole thing into a totally seamless video wall. Choose any dimension from the smallest screens to the realisation of your wildest dreams.



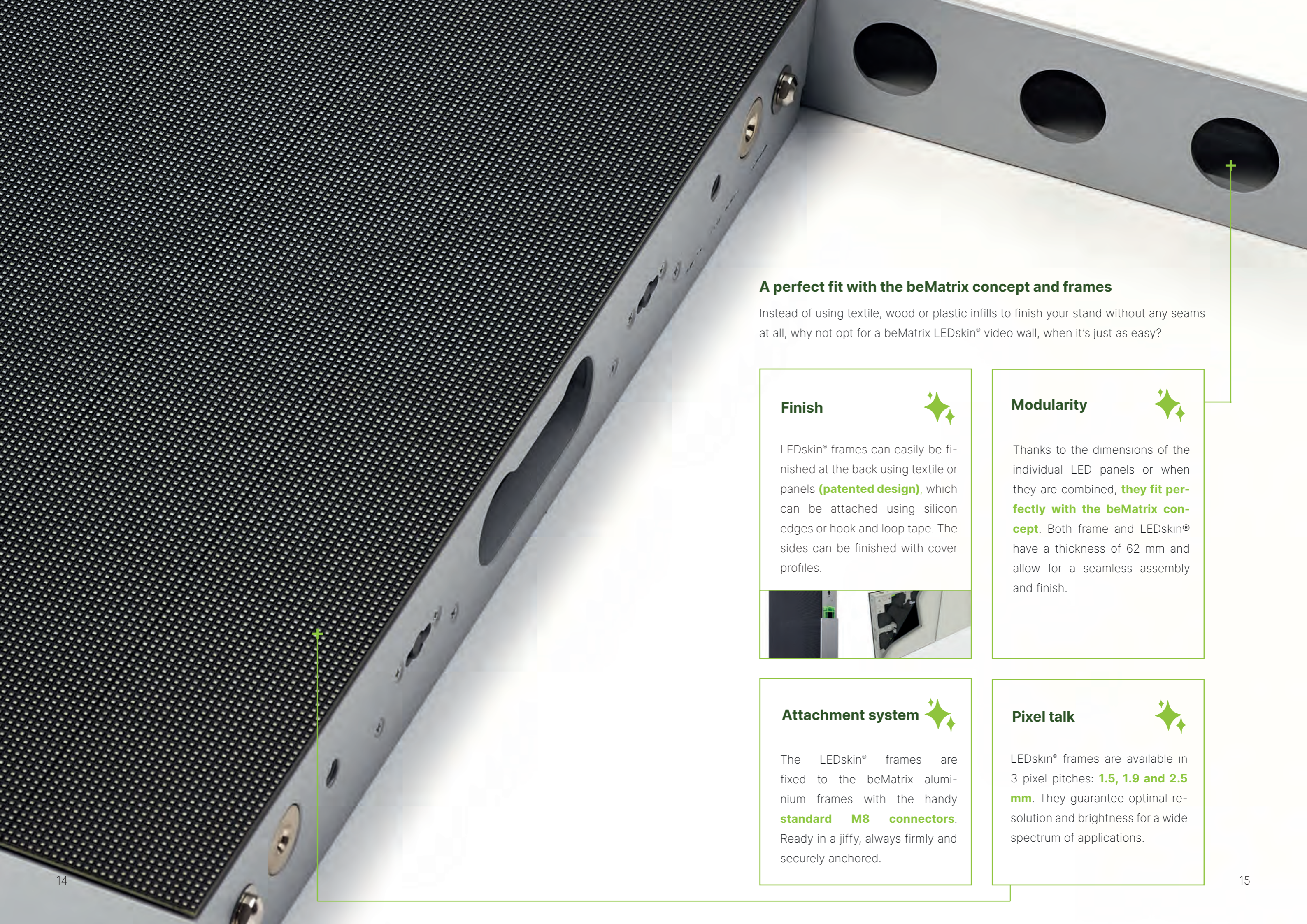
Discover the impact of LEDskin® on the beMatrix [YouTube channel](#).



© Brand New Coat

beMatrix





## A perfect fit with the beMatrix concept and frames

Instead of using textile, wood or plastic infills to finish your stand without any seams at all, why not opt for a beMatrix LEDskin® video wall, when it's just as easy?

### Finish



LEDskin® frames can easily be finished at the back using textile or panels (**patented design**), which can be attached using silicon edges or hook and loop tape. The sides can be finished with cover profiles.



### Modularity



Thanks to the dimensions of the individual LED panels or when they are combined, **they fit perfectly with the beMatrix concept**. Both frame and LEDskin® have a thickness of 62 mm and allow for a seamless assembly and finish.

### Attachment system



The LEDskin® frames are fixed to the beMatrix aluminium frames with the handy **standard M8 connectors**. Ready in a jiffy, always firmly and securely anchored.

### Pixel talk



LEDskin® frames are available in 3 pixel pitches: **1.5, 1.9 and 2.5 mm**. They guarantee optimal resolution and brightness for a wide spectrum of applications.



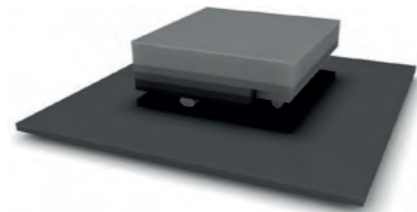


## LEDskin® P1.5

beMatrix and Unilumin have created a high quality LEDskin® cabinet. The LED modules are available in pixel pitch 1.5 mm with **COB Flip Chip** LED technology. More integration options are available such as to the beConstruct profile, or any other b62 product. Thanks to its **robust design** this is a big game changer, as it is the first LED cabinet with robust technology that is available in the rental business.

### Chip on Board technology

The COB (Chip on Board) technology is new in the rental market where many **individual RGB LED chips are mounted on a thermally efficient substrate** placed below a uniform contrast enhancing and physical protective layerstack. This technology has a much more durable LED surface continuously contributing to a high reliability combined with the hassle free setup that all beMatrix products have.



### A full-on sustainable solution

The LED cabinets and the displayed content can be used a multiple of times as opposed to most printed products which have a limited lifespan. This reduces resource consumption.

LEDskin® also saves on transportation and investment thanks to our expanding rental model where you can **collaborate through the bePartner network**. Our LEDskin® bePartners have LEDskin® stock and years of experience in the audiovisual sector. They can help you with perfectly integrating our LEDskin® into your beMatrix stand and assist in setting up striking content.

### Core specifications

- Original beMatrix b62 frame compliant
- State of the art COB (FC) technology: robust technology
- 320 × 320 HxV pixels **highest resolution**
- Cool and power efficient design
- Brightness 1000 Nits, contrast ≥ 10 000/1
- Size 496 × 496 × 62 mm
- Extremely lightweight 6.1 kg cabinet
- Fast and easy installation
- This new technology and LED cabinet is **patented**.

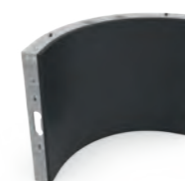
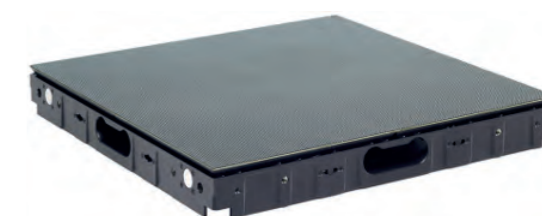


## LEDskin® P1.9 NEW!

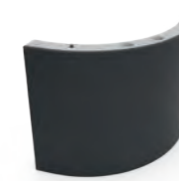
There is a technology trend where resolutions always seems to increase, display quality always gets better and sharpness or pitch follows this trend. beMatrix as a technology leader must be prepared for this market evolution and aims to have products launched at the moment the market is ready. Therefore, a new high res LEDskin® P1.9 IMD 2in1 is born.

### Glue on Board technology

A very **thin layer of glue is applied on top of the whole LED module** to reinforce the individual LEDs and resulting in a higher overall product durability. This advanced top notch GOB technology forms at the same time an additional contrast enhancing optical layer providing viewers a very high image quality.



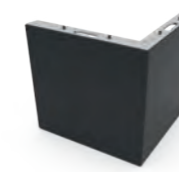
CONCAVE



CONVEX



INNER



OUTER

### Freedom of form

The creative ways in which you can use this LEDskin® P1.9 are almost endless and allow you to unlock your imagination. Think outside the conventional cube with a **convex and concave** LED module.

The P1.9 LED technology uses a wide viewing angle and gives your content a stunning color & brightness. Next to the curvature options we also offer a P1.9 **perfect corner** to play with optical illusion.

### Core specifications (straight module)

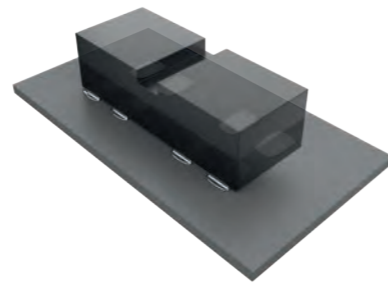
- Original beMatrix b62 frame compliant
- IMD MT2 2in1 state of the art LED tech brings a very wide color brightness viewing angle
- Glue on Board technology: highly durable
- 256 × 256 HxV pixels **highest resolution**
- Brightness 1000 Nits, contrast ≥ 5000/1
- Size 496 × 496 × 62 mm
- Lightweight 7.6 kg cabinet
- Fast and easy installation

## LEDskin® P2.5

A new generation of LEDskin® is launched with a new design language, improved display specifications, more integration options available in **straight, convex, concave, perfect corner and outdoor**. This tile includes all learned lessons beMatrix acquired. Produced by Infiled, it has a pixel pitch of 2.5 mm to improve the displayed image quality. At the same time, we improved the **strength and robustness** of the LED surface using **IMD 2 in 1** LED technology.

### Integrated Matrix Device LED technology

This new LED cabinet uses IMD (Integrated Matrix Device) 2 in 1 technology. **Two groups RGB LEDs are gathered in a small unit** called IMD. This new generation of LED packaging technology that meets and exceeds the current market demand in terms of both image quality and durability.



### Tech talk

This new LEDskin® P2.5 cabinet gives you a higher reliability thanks to its improved **anti-collision performance**. This latest developed state of the art IMD 2 in 1 LED technology offers an improved color and brightness consistency over a wide viewing angle. The benefits and qualities give you once more a stunning beMatrix creative solution.

LEDskin® also saves on transportation and investment thanks to our expanding rental model where you can **collaborate through the bePartner network**. Our LEDskin® bePartners have a minimum of LEDskin® stock and years of experience in the audiovisual sector. They can help you with perfectly integrating our LEDskin® into your beMatrix stand and assist in setting up striking content.

### Core specifications

- Original beMatrix b62 frame compliant
- IMD 2.5 MT2 technology: high colour consistency
- 192 × 192 HxV pixels high resolution
- Brightness 1200 Nits, contrast ≥ 5000/1
- Size 496 × 496 × 62 mm
- Lightweight 7.5 kg cabinet
- Fast and easy installation
- This new technology and LED cabinet is **patented**.





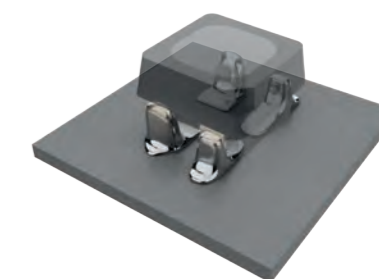
## LEDskin® P2.5 Outdoor NEW!

beMatrix is literally stepping outside with the LEDskin® P2.5 Outdoor. We are taking our first steps into the world of outdoor LED displays with a 'near view' LED solution in pixel pitch 2.5. Near view means that visitors can view information and advertisements up close on a bright screen with a sharp viewing angle.

With this product, we focus on the market of **smaller pop-up events and outdoor exhibitions** where visitors can pass close to the screen and see the information at a glance.

### Bright screen

The high screen brightness typically required for an outdoor screen (4000NIT) together with a stunningly **high contrast** makes this new beMatrix product a perfect fit for your outdoor events. Additionally, when there is no outdoor event ongoing, the beMatrix Outdoor LEDskin® is also a near to perfect fit for indoor usage and adds seamlessly with the beMatrix product range.



### Sharp viewing angle

This outdoor product differentiates itself from competition as it delivers a **high image quality**, typically expected for indoor usage. The new beMatrix outdoor LEDskin® shines over a very wide viewing angle making you really stand out with high quality visual imaging, non depending on the viewers position.

### Core specifications

- Original beMatrix b62 frame compliant
- High efficiency high brightness outdoor LED
- Protective and contrast enhancing optical layer GOB
- 192 × 192 HxV pixels high resolution
- Brightness of at least 4000 Nits
- Size 496 × 496 × 62 mm
- Lightweight 8 kg cabinet
- Fast and easy installation
- P65 outdoor protection class
- Outdoor True1 TOP connectivity
- This new technology and LED cabinet is **patented**.

## LEDskin® product features

Every beMatrix LEDskin® product has been created with the same **strong product features**: easy connection, service ability, compatible with the b62 product range. Let's get a closer look.

### Easy connection

We installed extra slots, for a quick connection with other LEDskin® products such as the straight, curved, or perfect corner modules. Connection with slot profiles, Double Deck and beConstruct is also possible.



LEDskin® can transform your beMatrix Double Deck project.

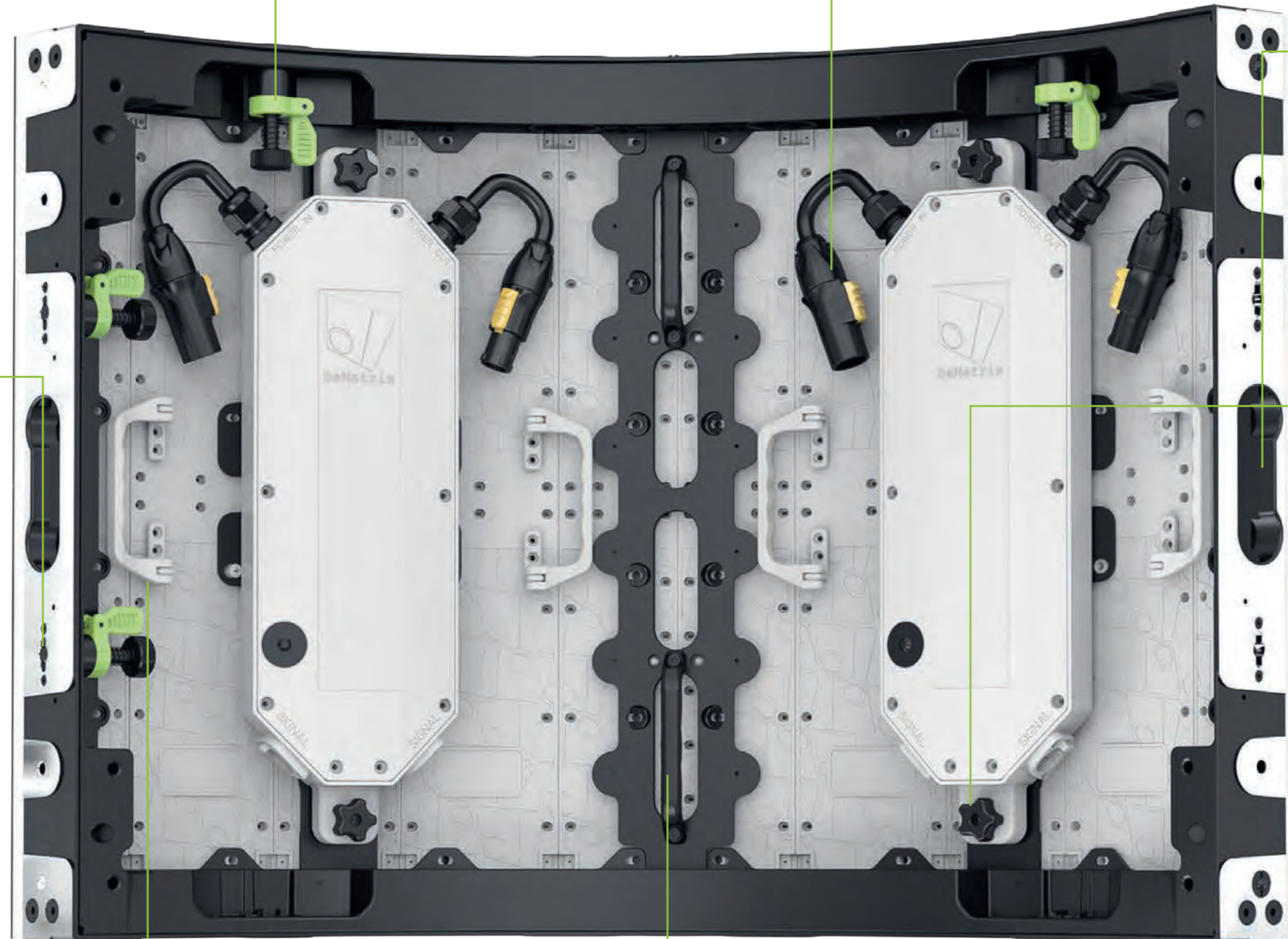


### Lock it up

Quick Locking system with built in precision alignment. The locks stay inside the b62 perimeter.

### Power in & output

Industry standard power plugs with a live connection capability. You can connect multiple frames together with the power in and output.



### Handles

For optimal handling we kept all LED panels as light as possible. Each one is provided with a handle to carry around the frame safely without damaging the modules.

### Service ability

PDU module can easily be removed without any tools. LED modules in front can be exchanged.

**EXPERT TIP:** For the straight module we have a handy removing tool for this: the GEKKO



Check out our 62 seconds of Gekko, and see how it works!



### Handle like a pro

Every LED product has LED board grips for an easy handling.

### Seamless finish

The advanced, precision-engineered frame ensures flawless visuals with no gaps or seams, delivering consistent perfection every time.



EASTER

EENER

WELCOME TO Fa...  
be...  
ROE...

## Transport, protect, plug and play

You don't need to be a wizard to use LEDskin®. Our LED wall is plug & play: **you only need to mount the tiles, plug it in and connect to your video device/computer.**

The dedicated LEDskin® Novastar platform is compatible with both Mac and PC operating systems, as well as with all popular video standards. We have one controller in our range, the Novastar MX20 (200 21 16) which has a high pixel output & advanced features. You simply connect the device in the usual way, start the video or application and the walls of your beMatrix stand instantly come to life!



For optimal handling we kept all LED panels as light as possible. One individual LEDskin® tile weighs in between 7 and 8 kg, depending on the model, and has a handle to carry it around.



This flightcase has been developed with the main goals of fast, safe, handy and full LEDskin® protection. We provided a creative layout with **in-case protection** where no physical contact between LEDs and Flightcase is possible. This flightcase fits 8 LEDskin® tiles (2 m²) and all cables needed for any creative setup.





## Technical specifications

PIXEL PITCHES	1.5 MM COB	1.9 MM 2IN1 GOB	2.5 MM IMD 2IN1	2.5 MM OUTDOOR
---------------	------------	-----------------	-----------------	----------------

### Straight LED frames

Art. no.	215 20 08	219 10 08	225 10 08	225 11 08
Number of LEDskin® modules per cabinet	4 pcs	4 pcs	4 pcs	4 pcs
LEDskin® module resolution	180 × 180 pixels	128 × 128 pixels	96 × 96 pixels	96 × 96 pixels
LEDskin® module dimensions	248 × 248 mm	248 × 248 mm	248 × 248 mm	248 × 248 mm
LEDskin® cabinet resolution	320 × 320 pixels	256 × 256 pixels	192 × 192 pixels	192 × 192 pixels
LEDskin® cabinet dimensions	496 × 496 × 62 mm	496 × 496 × 62 mm	496 × 496 × 62 mm	496 × 496 × 62 mm
Pixel density	416.233 pixels/m <sup>2</sup>	266.389 pixels/m <sup>2</sup>	149.844 pixels/m <sup>2</sup>	149.844 pixels/m <sup>2</sup>
Cabinet weight	6,1 kg	7,9 kg	7,5 kg	7,9 kg

### Curved LED frames - concave - R430

Art. no.	-	289 14 19	289 14 25	-
Number of LEDskin® modules per cabinet	-	4 pcs (2 left – 2 right)	4 pcs (2 left – 2 right)	-
LEDskin® module resolution	-	138 × 96 pixels	138 × 96 pixels	-
LEDskin® module dimensions	-	356 × 248 mm	356 × 248 mm	-
LEDskin® cabinet resolution	-	368 × 256 pixels	276 × 192 pixels	-
LEDskin® cabinet dimensions	-	496 × 496 × 496 mm	496 × 496 × 496 mm	-
Pixel density	-	266.389 pixels/m <sup>2</sup>	149.844 pixels/m <sup>2</sup>	-

### Curved LED frames - convex - R430

Art. no.	-	289 04 19	289 04 25	-
Number of LEDskin® modules per cabinet	-	4 pcs (2 left – 2 right)	4 pcs (2 left – 2 right)	-
LEDskin® module resolution	-	156 × 96 pixels	156 × 96 pixels	-
LEDskin® module dimensions	-	402.6 × 248 mm	402.6 × 248 mm	-
LEDskin® cabinet resolution	-	416 × 256 pixels	312 × 192 pixels	-
LEDskin® cabinet dimensions	-	496 × 496 × 496 mm	496 × 496 × 496 mm	-
Pixel density	-	266.389 pixels/m <sup>2</sup>	149.844 pixels/m <sup>2</sup>	-

### Perfect Corner LED frames

Art. no.	292 04 00	291 04 00	291 04 00	291 04 00
Number of LEDskin® modules per cabinet	8 pcs	8 pcs	8 pcs	8 pcs
Frame type	COB frame	Std MKIII frame	Std MKIII frame	Std MKIII frame
Compatible with	P1.5 COB	P1.9, P2.5, P2.5 Out.	P1.9, P2.5, P2.5 Out.	P1.9, P2.5, P2.5 Out.



Did you know that the same perfect corner frame can be used to fill with P1.9, P2.5 en P2.5 outdoor modules. One frame does it all.



PIXEL PITCHES	1.5 MM COB	1.9 MM 2IN1 GOB	2.5 MM IMD 2IN1	2.5 MM OUTDOOR
---------------	------------	-----------------	-----------------	----------------

### Mechanical and optical ratings

Surface flatness	Gap ≤ 0,12 mm	Gap ≤ 0,20 mm	Gap ≤ 0,20 mm	Gap ≤ 0,20 mm
Brightness	1000 nits	800 nits	1.200 nits	4000 nits
View angle	170°/170°	160°/160°	170°/170°	170°/170°
Optimal viewing distance	≥ 1,5 m	≥ 1,9 m	≥ 2,5 m	≥ 2,5 m
Brightness adjustment	0-100% 100 steps	0-100% 100 steps	0-100% 100 steps	0-100% 100 steps
Contrast ratio	≥ 1:10.000	≥ 1:5000	≥ 1:5000	≥ 1:5000
LED technology	COB FC	IMD 4 in 1	IMD 2 in 1	SMD outdoor
Color technology	EBL+	CBSF	CBSF	Std.
Refresh rate (Hz)	3840	3840	3840	3840
Mask	No	GOB	Yes	GOB
LED Push off force	Na.	Na.	4,3kg AVG	Na.

### Power supply

Max. power consumption / cabinet	140 W	150 W	144 W	200 W
Average power consumption / cabinet	25 W	50 W	30 W	50 W
Platform	Novastar	Novastar	Novastar	Novastar
Receiver card	A10s-Pro	A10s-Pro	A10s-Pro	A10s-Pro
Operating life	100.000 hours	100.000 hours	100.000 hours	100.000 hours




ER  
R



### 830 003 – Possible configurations

- Versatility in dimensions
- Can all be made with parts of standard set only
- Enhanced with standard B62-frames, doors, etc.
- Drawings available
- Static calculations are available



Network  
beMatrix\_Guest  
guest@beMatrix



boeTV

# 75" beTV

## TV integrated in beMatrix frame

No more mounting a TV into your stand using a bracket! Forget seeing cables and troubles with hiding them. Gaps between your TV and your stand design? All of that is in the past with the beMatrix beTV. **The ultimate electronics building block** and eye catcher of your design!



beTV is a professional retail 75" TV integrated in a b62 beMatrix frame with dimensions **992 x 1984**. Both portrait or landscape installation are perfectly possible. Multiple beTVs can be combined to form a video wall.

beTV works like a **b62 building block** that you conveniently place into your stand or that serves as a stand-alone. The backside can be finished with 3 mm panels or textile.

The set is always delivered in a flightcase in which you can store additional frames and base plates.



## beTV USP's compared to consumer TV

- Landscape & portrait usage (menu and/or content rotation)
- 24h/7d
- 2y warranty
- **Brightness** (500 nit) allows for always on 24/7: important for fairs
- Fast recovery IPS panel with **4K resolution** (3840 x 2160 pixels)
- Dustproof: important for fairs
- **Wide viewing angle** (no colour wash)
- Embedded content player (4GB internal memory)
- Clear view panel with non-glair coating
- **Built-in Wi-Fi** access point: important for fairs
- Inputs: HDMI (3)/DP/DVI-D/USB 2.0 /RS232C/RJ45/Audio/IR
- Outputs: HDMI Out/Audio Out/RS232C





Scan to receive your brochure



Le système



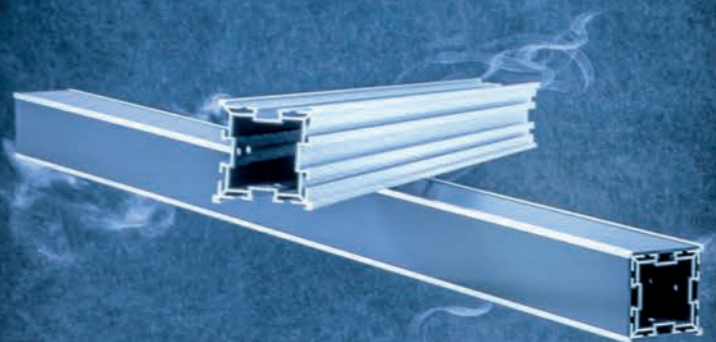
Le Xtreme solutions



Electronic solutions



# beConstruct



- ✔ LARGE SPANS
- ✔ HIGH STANDS
- ✔ LIGHTWEIGHT 124 PROFILE
- ✔ 100% COMPATIBLE WITH ALL BEMATRIX PRODUCTS
- ✔ FINISH WITH PANELS

OPENS  
OPENS  
OPENS  
OPENS



# beMatrix®

The leading system for  
**easy and sustainable**  
event building

# Lightbox

# Lightbox

## No boundaries to your creativity

There is no end to the creative ways in which you can use our lightboxes. From a perfectly aligned lightbox and frame, for a minimal and flawless look, to a unique combination of a number of lightboxes **in all shapes and sizes**, for a fabulous and eye-catching 3D effect.



## Single or double sided lightbox

The sideLED lightboxes are built as a beMatrix building block and are therefore **easy to mount** onto the beMatrix frame system. They can also be used as a freestanding item. Modularity is key!

Single sided	Double sided	
		
<b>62S sideLED lightbox</b> 780 +++++ +++++	<b>124D sideLED lightbox</b> 781 +++++ +++++	<b>186D sideLED lightbox</b> 786 +++++ +++++

## 62s sideLED lightbox

The 62s is our only single sided lightbox in the range with a width of 62mm which fits perfectly with b62 frames. This makes it the perfect building block in your range. Thanks to the powerful improved sideLED modules, a very **visible item that can change your design** immediately.



To ensure the stability of the frame we advise a maximum dimension of 992 × 2976 mm. If there is extra support from the surrounding frames, your construction can go up to 1488 × 2976 mm.



## 124D sideLED lightbox

Our newest innovation in the lightbox range is the 124d sideLED lightbox. It works as a building block in your beMatrix range and is now **more modular than ever!**

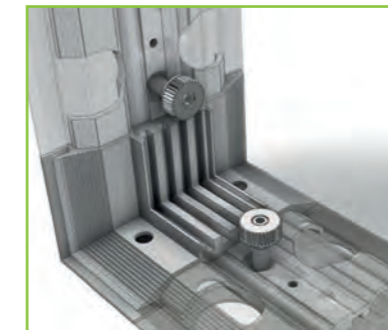
It's lower and thinner profile ensures that there is less chance of shadow and that the light output is bigger and better. The lightbox is easy to mount and can also go infinitely wide thanks to intermediate tubes that guarantee you strength in your construction.



The 124D sideLED lightbox has an **adjusted lighting beam** that allows you to illuminate at a shorter distance on two sides and therefore also has a bigger light output and can be perfectly used in bigger designs.



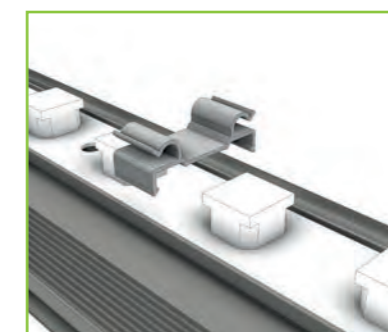
The lightbox has a **non-binary end** to the inserted LED that perfectly fits its own built-in transfo. This means, no more hassle with male and female ends of cables!



Technical innovation: we replaced the joining set with numerous screws with an **aluminium corner piece**. Just slide the profile in and fasten it with 2 screws.



All profiles are sawn off straight to support modularity. By using a 180° connector, you can easily join 2 straight profiles together to have another size of lightbox.



The LED strip is secured with handy clips that also provide cut-outs for clamping cables. This ensures easy cabling.



**Intermediate tubes** are provided for larger structures. These are attached with clips.



The 124D lightbox is perfectly combinable with our beConstruct profile. Read our brochure 'Xtreme' on [www.beMatrix.com](http://www.beMatrix.com).





## 186D sideLED lightbox

The 186D lightbox is a double sided lightbox with a width of 186 mm. This **ensures you stability** in your design and is especially created for bigger light constructions where strength is key.



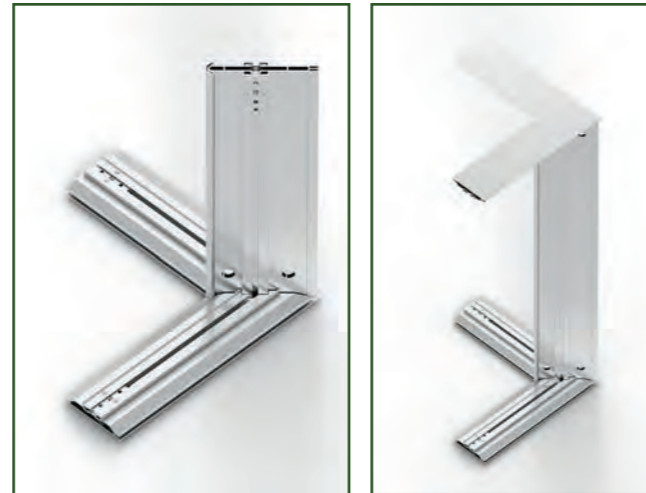
If you want to have a broader look on your lightbox and your stand, this is the perfect lightbox to use! You can either **integrate it** or **use it as a standalone object**.



## Lightbox extensions

### 124D Perfect Corner Lightbox NEW!

Eliminate blind spots with the 124d Perfect Corner Lightbox. The tripod is a **434×434×496 welded and double sided 90°** corner structure. Combine 2 pieces, top and bottom, and add 124d profiles with the 180° connector set (781 001) to build a Perfect Corner Lightbox that you can finish on both sides.



We also have a **fully welded perfect cornerframe** in standard dimensions available. You have to combine 124d profiles with the 180° connector set (781 001) to build a Perfect Corner Lightbox.

### Flatscreen bracket NEW!

**Hang a TV on the visible side** of the Lightbox thanks to a special Lightbox Flatscreenbracket. This bracket can be attached to the standard intermediate tubes. **Pro tip:** this setup can also be used to mount a tv in a curved frame.

### Shelves & brackets NEW!

**Create additional hanging space** in front of your lightbox with **Lightbox magnets set** with one or two pieces (article 781 016 or 781 017).

With this addition, no notches need to be made in the textile. Max. permitted weight of 1 kg per magnet. (package excl. shelves, compatible with all market variants)



### 124D Poweredled side set 270 00 08 SET

Next to the standard 473mm LED strip, there is a 178mm LED strip. to fill the remaining part of the 124D Lightbox when the standard LED strips are too long.

### Lightbox flatscreen bracket 781 018 SET

### 124D Lightbox support set 801 +++++ SET

Use when you want to extend your 124D Lightbox.  
OR

### Tube D20/A.5 + spring connector 801 +++++ 0010 781 019 SET

Use when you want to extend 124S, 168D, a b62 frame or put a flatscreen bracket in a curved frame.

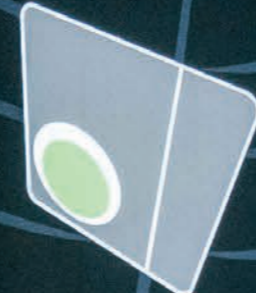
### Lightbox bracket with 2 magnets 781 017

### 124D Perfect Corner Lightbox - Tripod 782 000

### OR 124D Perfect Corner Lightbox - Cornerframe 782 001 +++++



The leading system for easy and sustainable event building



beMatrix®



# LightLine

# LightLine NEW!

## Brighten the details

Putting a bold idea into frames, sometimes is not enough. With the LightLine products, you can now **highlight accents or create unique features** in your design in an easy way. Discover the versatility of the Cover and Profile LightLine and make your customers' brand stand out even more. It's all about the details – and we like to brighten them.

## Cover LightLine

Next to the b62 cover to clip onto the b62 frames, we have a Cover LightLine in our range. You can simply add **LED glow to the edges of the frames** with this product made of flexible base material. It attaches easily to the frames in the same way as the regular cover.

The Cover LightLine has RGBW LEDs, meaning red, green, blue and white LEDs. The light distribution is nice and even. It combines functionality (cover the holes) and sets the right tone to your stand.

It can be used as additional showelement or can brighten up any booth and shed extra light where the Cover LightLine is used in a more functional way. A real multifunctional!



## Profile LightLine

Meet the Profile LightLine in our range. Easily add a **touch of LED light in each groove** of the beMatrix 62 profiles and brighten the details of your stand.

The Profile LightLine is made of **a flexible base material** and sets the right tone to your stand. The assembly is as easy as it could be: you simply push the LightLine into the groove of the 62 profile, connect, and your profile lights up! This new product has RGBW LEDs, meaning red, green, blue and white LEDs which allow for millions of colors or white tones and ensures a nice and even light distribution.





# Lighting

# SAM Light

## Accent lighting

Would you like to draw attention to a specific part of your booth? Illuminating panels, walls and/or products can be done simply with the SAM Light.

This **adjustable LED lamp** is distinguished by its sleek, stylish design, various mounting options and use of LED technology. It is possible to install up to 6 SAM Lights on one power supply (160W).

## 2 in 1

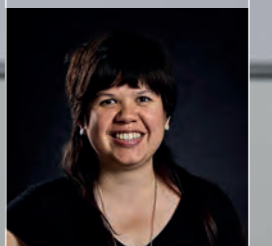
The greatest asset of this design light is its "2-in-1" principle: you can switch from cold to warm light with one simple switch. This choice can be made both during and after construction and can also be adjusted anytime.

## Moveable headlight

The three integrated LED lights are 340° adjustable, so any surface can be illuminated at any desired angle, including upwards!

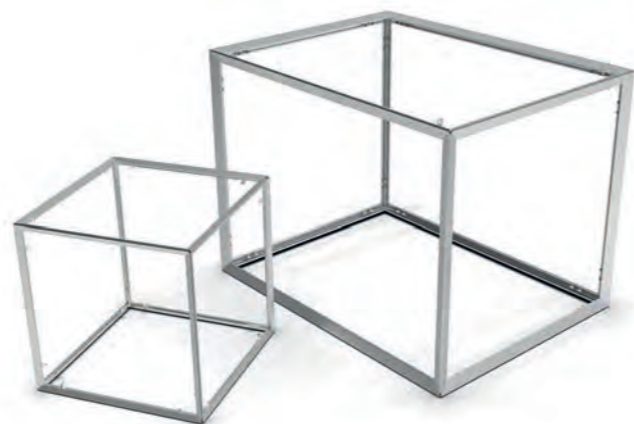


Did you know that the SAM Light was named after Samantha? She is an R&D team member of beMatrix HQ and the inventor of this modular LED light system!



### Inspiration: illuminated Boxscreens

Do you know about the **Boxscreen** and the **Boxscreen MINI**? They are sturdy, hanging constructions (covered with textile) from the iZi range that don't let you go un-noticed during an exhibition. They can be combined with the SAM Lights; that way you can draw even more attention to you. Ideal for creating the perfect atmosphere.



ART. NR: 250 05 50 S  
 DIMENSION: 430x100x20 MM  
 WEIGHT: 0.8 KG  
 LUMINOUS FLUX: 1200 LM  
 COLOUR TEMPERATURE: 3500 K / 5000 K  
 ELECTRICITY CONSUMPTION: 15 W





logitech

We work where You work

logitech

Innovative experiences loved by the advanced users

logitech

Precision, performance, mastery

logitech

Anywhere workplace

logitech logitech

enable every room, enable every person

tech

meetings

Do you want more information about boxscreens and how to integrate them? Read our brochure 'The System' on [www.beMatrix.com](http://www.beMatrix.com).



© More Than Event



64



65

© De Decorkliniek

# BIG SAM Light

## Bigger stand building options

The BIG SAM Light is the perfect solution for equal illumination of large surfaces. The adjustable LED light gives you **maximal flexibility** as you can turn it 340°. This allows you to mount it at the top of the structure as well as below depending on the desired exposure.

The power supply is integrated in the light, so no hassle anymore to hide the power supplies. You can connect the light directly on the net of 110 or 220V. Above that the cables have a security lock to prevent disconnecting and when the current exceeds the maximum you can easily push the integrated safety function that shuts down and resets the light. It is possible to install up to 6 SAM Lights on one power supply (160W).

## Connectable lights

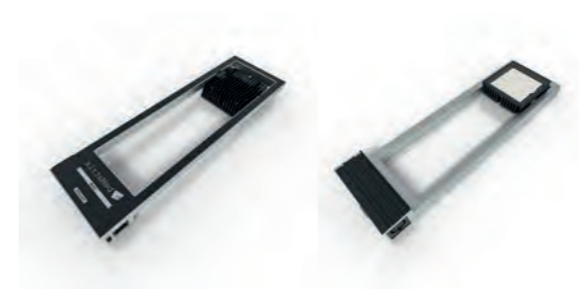
It is possible to connect up to 20 BIG SAM lights on only one power supply, and this with the extension cables that come with the lights.

## 3 in 1

The light consists of a 3-in-1 principle: you can switch easily between three colour temperatures: cold, neutral and warm light. This gives you the opportunity to adjust them to the atmosphere you want to create.



SAM Light	BIG SAM Light
<ul style="list-style-type: none"> <li>• 2 colour temperatures</li> <li>• 3 lighting heads</li> <li>• 1200 lumen</li> <li>• 15W power consumption</li> <li>• Connecting up to 6 lights</li> <li>• /</li> <li>• /</li> <li>• Flightcase with 6 lights</li> <li>• Light a wall of max. 2.5m</li> <li>• Light a part of the wall</li> </ul>	<ul style="list-style-type: none"> <li>• 3 colour temperatures</li> <li>• 1 BIG lighting head</li> <li>• 4600 lumen</li> <li>• 42W power consumption</li> <li>• Connecting up to 20 lights</li> <li>• Security lock to prevent disconnecting cables</li> <li>• Integrated safety function when current &gt; max</li> <li>• Flightcase with 10 lights</li> <li>• Light a wall up from 2.5m</li> <li>• Light a complete wall or a part of your stand</li> </ul>



**ART. NR:** 250 05 51 S  
**DIMENSION:** 562x165x51 MM  
**WEIGHT:** 1,74 KG  
**LUMINOUS FLUX:** 4600 LM  
**COLOUR TEMPERATURE:** 2700 K / 3500 K / 5000K  
**ELECTRICITY CONSUMPTION:** 42 W

*the* **DAILY**  
NEWSPAPERS & MAGAZINES

*the* **DAILY**  
NEWSPAPERS & MAGAZINES

*the* **DAILY**  
NEWSPAPERS & MAGAZINES

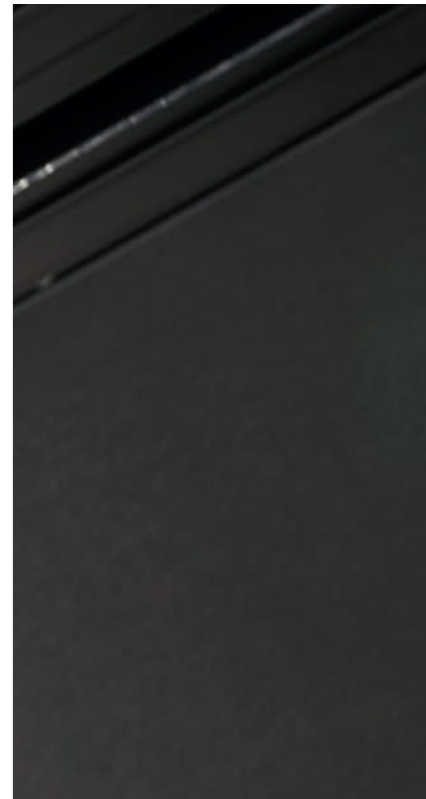
# Track Light System

If you use standard lights in the event sector, it is common that the cabling is an issue. It looks untidy and is not easy to work with. From this point of view we are happy to propose the Track Light System. A beMatrixfied solution that can be used in all beMatrix setups! There is no better way to add adjustable and seamless lighting to your setup than with the Track Light System from beMatrix.

## Fast integration

beMatrix developed a **square 62x62 profile** that matches with the existing EUTRAC profile. This Track Light profile fits perfectly with our modular b62 frame system, where it is integrated quickly and easily.

The Track Light System can be nicely incorporated in various ways. Thanks to the modular DNA, the possibilities are endless. Mount the profile in a ceiling, on top of or in a wall, in a banner, a frame or stand-alone as a lighting pole on a baseplate.





### Seamless & custom finish

For a neat and tidy result, the Track Light System is a versatile offering which let you **adjust the light in many ways**. The light can be rotated in all directions, can be adjusted for lightbeam, narrow or wide lightbeam. The power can be adjusted and the light color temperature can conveniently be adjusted from cold to warm. Light up your booth as you want it.

NEW!



#### BLACK LED TRACK ZOOM LIGHT

ART. NR: 261 05 02 B

LUMINOUS FLUX: 3200 LM

ELECTRICITY CONSUMPTION: 25, 30 OR 35 W

COLOUR TEMPERATURE: 3000, 4000 OR 6500 K

ADJUSTABLE LAMP HEAD: YES: 15 - 55°

COLOUR: BLACK

NEW!



#### WHITE LED TRACK ZOOM LIGHT

ART. NR: 261 05 02 W

LUMINOUS FLUX: 3200 LM

ELECTRICITY CONSUMPTION: 25, 30 OR 35 W

COLOUR TEMPERATURE: 3000, 4000 OR 6500 K

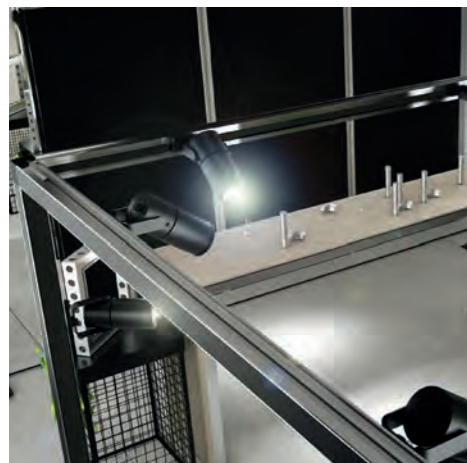
ADJUSTABLE LAMP HEAD: YES: 15 - 55°

COLOUR: WHITE

Do you want an integrated Track Light System in your design? This is possible! Check out the drawing and the smooth result. You won't tell there's a track behind it!



Integration as a banner



Integration on top of a wall



Integration in a ceiling



Integration in a wall





# BIG Light

beMatrix also has a solution for equal illumination of large surfaces. With the BIG Light you get a sturdy **LED floodlight** that is providing large areas with warm or cold light both indoors and outdoors.

## General lighting

The BIG Light can simply be mounted on the large holes of the frame system with the provided bracket. This lighting solution is perfectly compatible with beTruss or for high walls. You can connect 16 BIG Lights on one electrical circuit. BIG Light has IP65, CE, RoHS and ISO9001 certificates.



**ART. NR:** 250 05 63 10X

**DIMENSION:** 475X490X550 MM

**WEIGHT:** 5 KG

**LUMINOUS FLUX:** 23 000 LM

**ELECTRICITY CONSUMPTION:** 200 W

**BEAM ANGLE:** 120°

**COLOUR TEMPERATURE:** 3000 K / 5000 K

**COLOUR:** BLACK

**CONTENT OF 1 BOX:** 10 BIG LIGHTS, 10 BRACKETS, 2 POWER SUPPLY CABLES OF 1.5 M,  
10 LOOP-THROUGH CABLES OF 3 M



# Support





### beMatrix, your reliable partner

Before, during and even after the completion of your project, beMatrix is always at your service. beMatrix clients can rely on an extensive and innovative product range, creativity that manifests itself in inventive design, thorough technical and commercial support, flexible delivery times and all the benefits of a strong, cohesive international sales network.



# Logistics

The aluminium frame system is lightweight, hence very ergonomic and eco-friendly: no need for the stand builder to carry around heavy structures, while **transport weight and CO2 emissions remain low.**

beMatrix also helps with the transportation from departure to arrival, including any customs formalities.



# MybeMatrix

**Technical leaflets & 3Ds**  
In MybeMatrix you have access to all our "how-to's" and technical leaflets with step by step guides. 3Ds show more than images. Get full access to the 3D library!



**beMasters**  
Our international network of exhibition builders.

**beAcademy**  
Our events are the perfect opportunity to discover the versatility of the frame system and to get a unique glimpse behind the scenes of beMatrix.



**beCAD**  
Create, control and calculate your beMatrix project with beCAD. Completely free, all-in-one online tool loved by exhibition designers.



**bePartner network**  
We collaborate with a few select partners/suppliers for specific services. These partners have been hand-picked and they are audited annually!



**Kontainer**  
A wide selection of projects for you to become acquainted with beMatrix products, services and the endless possibilities of our system.



Scan and discover  
our bePartners.



# Global Rental Network

The Global Rental Network is a **network of service centres** with a large range of beMatrix products **spread all over Europe, the UK and the USA**. Thanks to this network, you do not have to ship your beMatrix stock around, but you can use the **large stock available** at that location. Moreover the availability of frames is almost unlimited and will allow you to build exceptionally large projects.



## Locations

+ 

We offer two different renting options so you get a favourable price and, maybe even more interesting, a spread of the costs for your beMatrix project.

**Short-term** renting has a typical run time of 1-5 weeks. **Long-term** renting has a minimal run time of 1 year (fixed price for the first 6 months). Both rental plans can also be combined, according to your specific needs.



Start exploring the Global Rental Network on the **website** or in **brochures** on [www.beMatrix.com](http://www.beMatrix.com).

# Contact



## beMatrix HQ, Belgium

Head office | Rental & Service Center

Wijnendalestraat 174  
8800 Roeselare  
Belgium

+32 51 20 07 50  
info@beMatrix.com



## beMatrix HQ, Belgium

Production

Industrieweg 49  
8800 Roeselare  
Belgium

+32 51 20 07 50  
info@beMatrix.com



## beMatrix Germany

Rental & Service Center

Benzstraße 14  
35799 Merenberg  
Germany

+49 171 35 44 014  
k.stegmaier@beMatrix.com



## beMatrix Scandinavia

Rental & Service Center

Idögatan 55  
582 78 Linköping  
Sweden

+46 727 28 34 54  
m.hammarberg@beMatrix.com



## beMatrix UK

Rental & Service Center

Unit 2 Lobb Farm, London Road  
Tetsworth Thame OX9 7BE  
United Kingdom

+44 1844 28 10 85  
a.burton@beMatrix.com



## beMatrix France

Rental & Service Center

Le Parc de l'Événement  
1, Allée d'Effiat, 91160 Longjumeau  
France

+33 614 51 57 15  
d.breitschaft@beMatrix.com



## beMatrix Italy

Rental & Service Center

Via F. Marinotti 45  
31029 Vittorio Veneto TV  
Italy

+39 3453 65 69 32  
g.grando@beMatrix.com



## beMatrix USA

Office | Production | Rental & Service Center

4476 Park Drive  
Norcross, GA 30093  
United States

+770 225 0552  
t.ericson@beMatrix.us



## beMatrix The Netherlands

Rental & Service Center

Uilenwaard 6  
5236 WB 's-Hertogenbosch  
The Netherlands

+31 851 30 67 22  
r.joeloemsing@beMatrix.com



## beMatrix Poland

Rental & Service Center

Winogrody 28  
61-663 Poznań  
Poland

+48 513 18 00 99  
l.checinski@beMatrix.com

# RED DOT BAR

NEWSPAPER







We love our customers...

and their projects! Scan this QR-code and scroll through some amazing realisations. Exhibits, events, retail, showrooms, pop-ups... all with beMatrix!







floorify  
RIGID VINYL  
PLANKS & TILES

floorify  
RIGID VINYL  
PLANKS & TILES



More to discover!

Get to know our System, Xtreme Solutions and Outdoor range in the brochures on [www.beMatrix.com](http://www.beMatrix.com) or scan the QR-code.





logitech

The future of meetings

logitech

We work where You work

logitech

Innovative experiences loved by the advanced users

logitech

Precision, performance, mastery

logitech

Anywhere workplace

logitech logitech

logitech  
Enable e  
enable e



**be strong**  **be stylish**  
be anything.

**Come say hi**

HQ Belgium  
Wijnendalestraat 174  
8800 Roeselare

**get in touch**

+32 (0)51 20 07 50  
info@beMatrix.com

**or boost your inspiration**

www.beMatrix.com  
socials @beMatrix

**f in**  