

LIGHTING SOLUTIONS

be anything.

EN



SAM Light	4
Accent lighting	4
Inspiration: illuminated Boxscreens	6
BIG SAM Light	10
Bigger stand building options	10
Track Light System	14
Fast integration	14
Seamless & custom finish	16
BIG Light	21
General lighting	21
Lightbox	22
No boundaries to your creativity	22
Single or double sided lightbox	23
Lightbox extensions	30
The 8 beMatrix principles	34
bePartners at your service	36

Technological development never stops at beMatrix. We offer lighting solutions that are easy and quick to install.

Our smart lighting solutions include **accent, atmosphere and general lighting**. These solutions can be used for different applications including booths of varying size, showrooms, pop-ups and within the retail sector.

SAM Light

Accent lighting

Would you like to draw attention to a specific part of your booth? Illuminating panels, walls and/or products can be done simply with the SAM Light.

This **adjustable LED lamp** is distinguished by its sleek, stylish design, various mounting options and use of LED technology. It is possible to install up to 6 SAM Lights on one power supply (160W).

2 in 1

The greatest asset of this design light is its "2-in-1" principle: you can switch from cold to warm light with one simple switch. This choice can be made both during and after construction and can also be adjusted anytime.

Moveable headlight

The integrated LED lights are 340° adjustable, so any surface can be illuminated at any desired angle, including upwards!

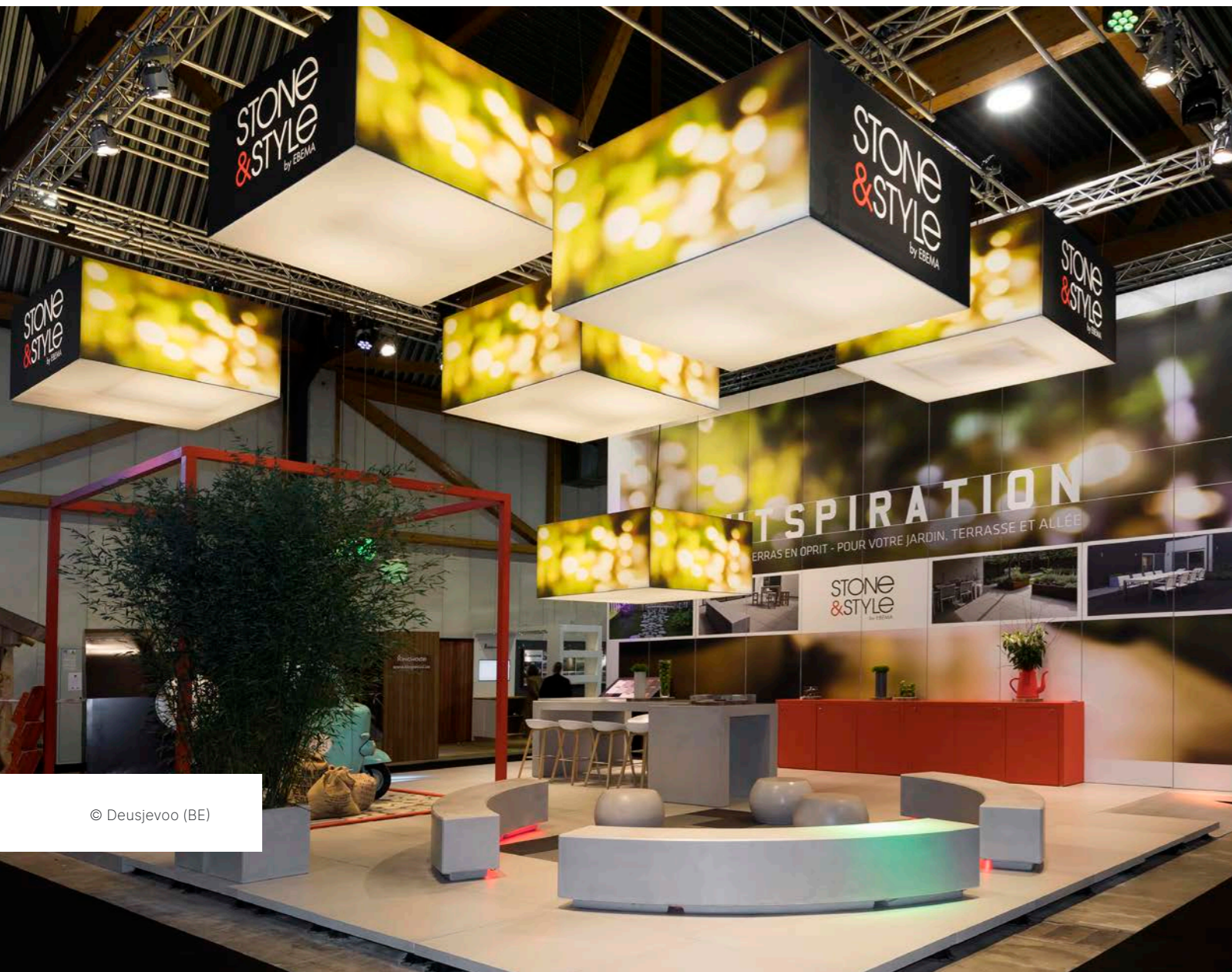
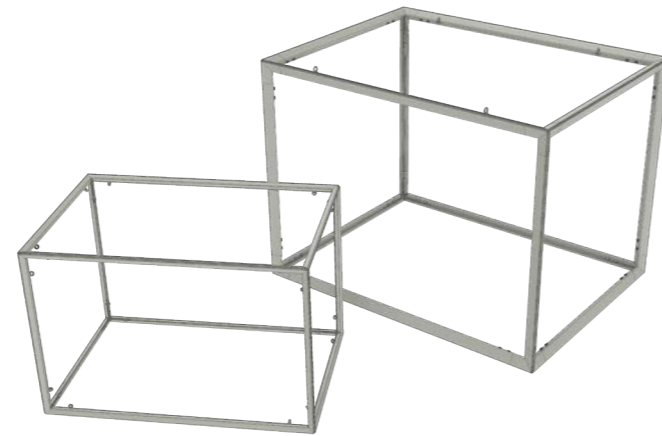


Did you know that the SAM Light was named after Samantha? She is an R&D team member of beMatrix HQ and the inventor of this modular LED light system!



Inspiration: illuminated Boxscreens

Do you know about the **Boxscreen** and the **Boxscreen MINI**? They are sturdy, hanging constructions (covered with textile) from the iZi range that don't let you go un-noticed during an exhibition. They can be combined with the SAM Lights; that way you can draw even more attention to you. Ideal for creating the perfect atmosphere.



© Deusjevo (BE)



© Bulik Standbouw (BE)



ART. NR: 250 05 50 S
 DIMENSION: 430x100x20 MM
 WEIGHT: 0.8 KG
 LUMINOUS FLUX: 1200 LM
 COLOUR TEMPERATURE: 3500 K / 5000 K
 ELECTRICITY CONSUMPTION: 15 W

© More Than Event (DK)



Do you want more information about boxscreens and how to integrate them? Read our brochure 'The System' on www.beMatrix.com.



© De Decorkliniek (BE)

BIG SAM Light

Bigger stand building options

The BIG SAM Light is the perfect solution for equal illumination of large surfaces. The adjustable LED light gives you **maximal flexibility** as you can turn it 340°. This allows you to mount it at the top of the structure as well as below depending on the desired exposure.

The power supply is integrated in the light, so no hassle anymore to hide the power supplies. You can connect the light directly on the net of 110 or 220V. Above that the cables have a security lock to prevent disconnecting and when the current exceeds the maximum you can easily push the integrated safety function that shuts down and resets the light. It is possible to install up to 6 SAM Lights on one power supply (160W).

Connectable lights

It is possible to connect up to 20 BIG SAM lights on only one power supply, and this with the extension cables that come with the lights.

3 in 1

The light consists of a 3-in-1 principle: you can switch easily between three colour temperatures: cold, neutral and warm light. This gives you the opportunity to adjust them to the atmosphere you want to create.



SAM Light	BIG SAM Light
<ul style="list-style-type: none"> • 2 colour temperatures • 3 lighting heads • 1200 lumen • 15W power consumption • Connecting up to 6 lights • / • / • Flightcase with 6 lights • Light a wall of max. 2.5m • Light a part of the wall 	<ul style="list-style-type: none"> • 3 colour temperatures • 1 BIG lighting head • 4600 lumen • 42W power consumption • Connecting up to 20 lights • Security lock to prevent disconnecting cables • Integrated safety function when current > max • Flightcase with 10 lights • Light a wall up from 2.5m • Light a complete wall or a part of your stand



ART. NR: 250 05 51 S

DIMENSION: 562x165x51 MM

WEIGHT: 1,74 KG

LUMINOUS FLUX: 4600 LM

COLOUR TEMPERATURE: 2700 K / 3500 K / 5000K

ELECTRICITY CONSUMPTION: 42 W

the **DAILY**
NEWSPAPERS & MAGAZINES

the **DAILY**
NEWSPAPERS & MAGAZINES

the **DAILY**
NEWSPAPERS & MAGAZINES

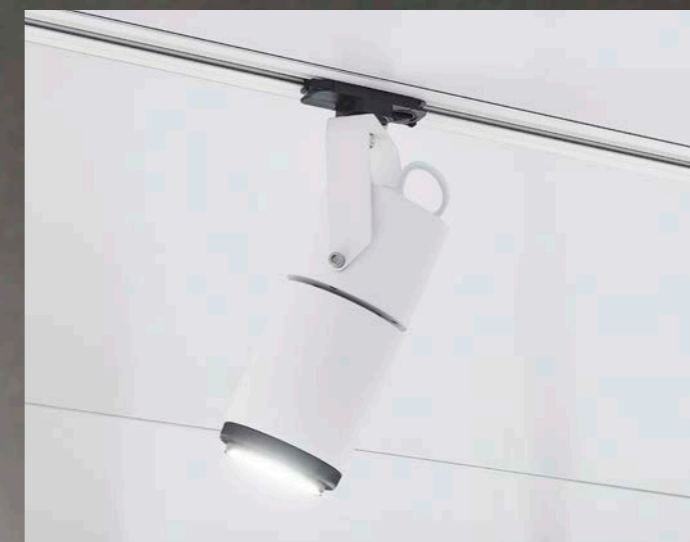
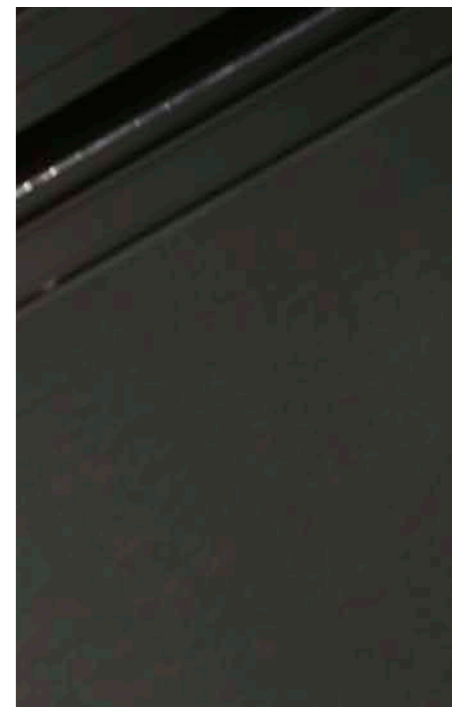
Track Light System

If you use standard lights in the event sector, it is common that the cabling is an issue. It looks untidy and is not easy to work with. From this point of view we are happy to propose the Track Light System. A beMatrixfied solution that can be used in all beMatrix setups! There is no better way to add adjustable and seamless lighting to your setup than with the Track Light System from beMatrix.

Fast integration

beMatrix developed a **square 62×62 profile** that matches with the existing EUTRAC profile. This Track Light profile fits perfectly with our modular b62 frame system, where it is integrated quickly and easily.

The Track Light System can be nicely incorporated in various ways. Thanks to the modular DNA, the possibilities are endless. Mount the profile in a ceiling, on top of or in a wall, in a banner, a frame or stand-alone as a lighting pole on a baseplate.





Do you want an integrated Track Light System in your design? This is possible! Check out the drawing and the smooth result. You won't tell there's a track behind it!



Seamless & custom finish

For a neat and tidy result, the Track Light System can be finished with panels on three sides. The Track Light System is compatible with existing track lighting, of which we have included a number of standard Delta Light models in our range. It is also possible to integrate a socket.



ART. NR: 261 02 01
LUMINOUS FLUX: 3555 LM
ELECTRICITY CONSUMPTION: 35 W
COLOUR TEMPERATURE: 3000 K
ADJUSTABLE LAMP HEAD: YES
COLOUR: AVAILABLE IN BLACK AND WHITE



ART. NR: 261 02 02
LUMINOUS FLUX: 1283 LM
ELECTRICITY CONSUMPTION: 14 W
COLOUR TEMPERATURE: 3000 K
ADJUSTABLE LAMP HEAD: NO (25°)
COLOUR: AVAILABLE IN BLACK AND WHITE

Integration as a banner



Lighting pole on a baseplate



Integration on top of a wall



Integration in a ceiling



Integration in a wall



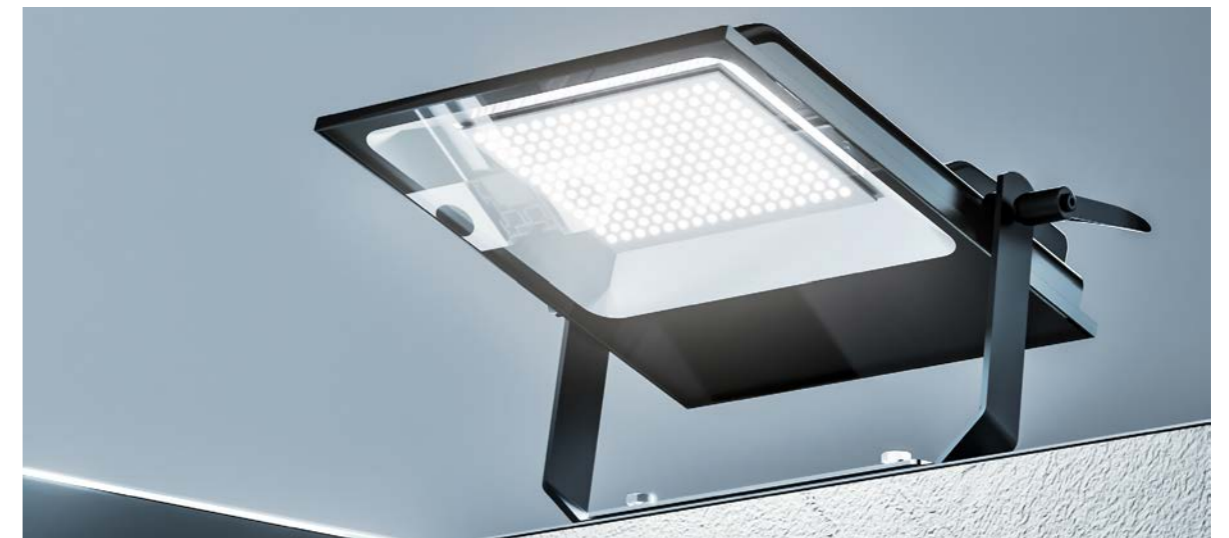


BIG Light

beMatrix also has a solution for equal illumination of large surfaces. With the BIG Light you get a sturdy **LED floodlight** that is providing large areas with warm or cold light both indoors and outdoors.

General lighting

The BIG Light can simply be mounted on the large holes of the frame system with the provided bracket. This lighting solution is perfectly compatible with beTruss or for high walls. You can connect 16 BIG Lights on one electrical circuit. BIG Light disposes of the IP65, CE, RoHS and ISO9001 certificates.



ART. NR: 250 05 63 10X

DIMENSION: 475X490X550 MM

WEIGHT: 5 KG

LUMINOUS FLUX: 23 000 LM

ELECTRICITY CONSUMPTION: 200 W

BEAM ANGLE: 120°

COLOUR TEMPERATURE: 3000 K / 5000 K

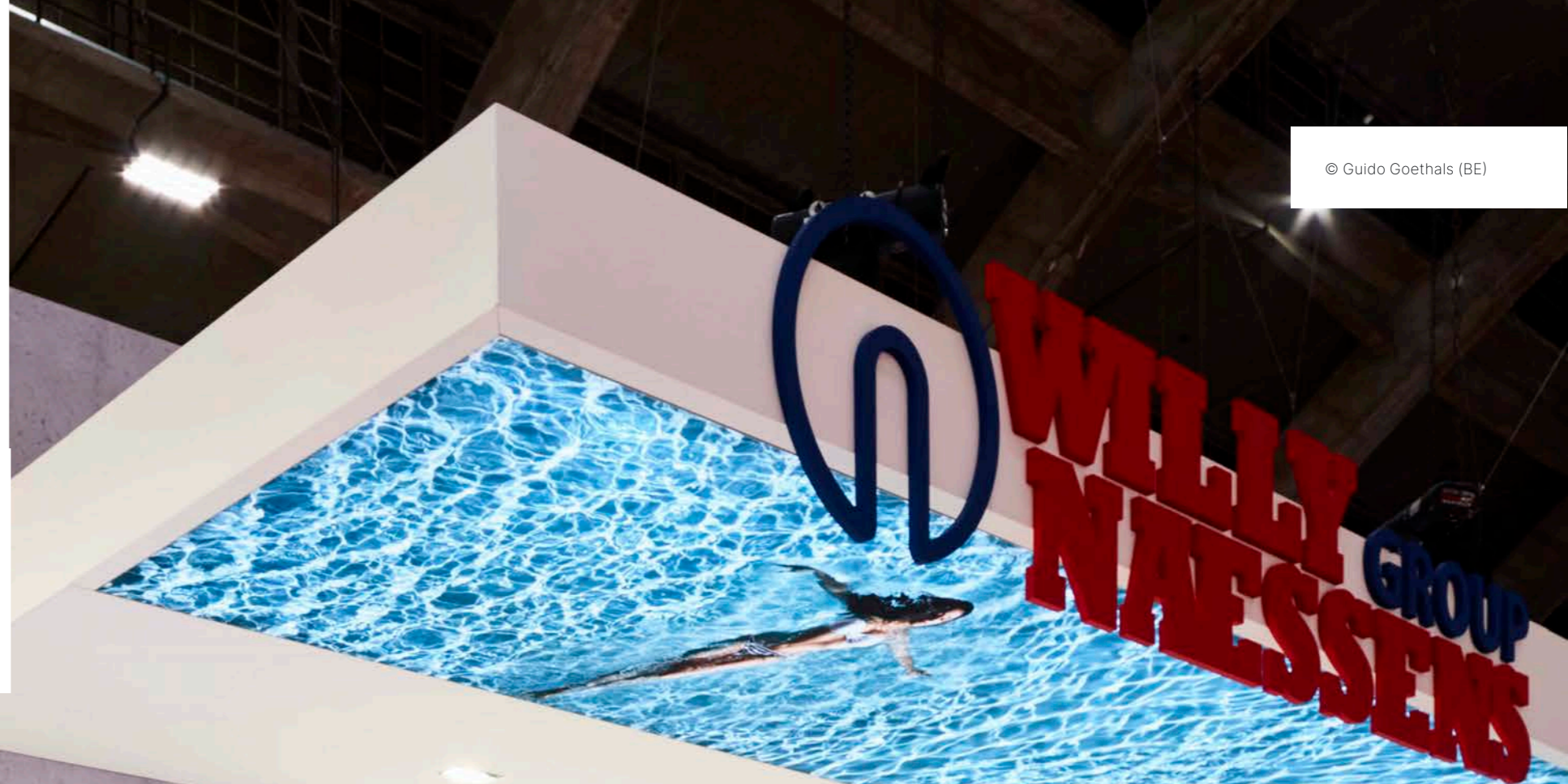
COLOUR: BLACK

CONTENT OF 1 BOX: 10 BIG LIGHTS, 10 BRACKETS, 2 POWER SUPPLY CABLES OF 1.5 M,
10 LOOP-THROUGH CABLES OF 3 M

Lightbox


No boundaries to your creativity

There is no end to the creative ways in which you can use our lightboxes. From a perfectly aligned lightbox and frame, for a minimal and flawless look, to a unique combination of a number of lightboxes **in all shapes and sizes**, for a fabulous and eye-catching 3D effect.



Single or double sided lightbox

The sideLED lightboxes are **easy to mount** onto the beMatrix frame system, thanks to the large holes, but you can just as well use them as a freestanding item.

Single sided	Double sided	
		
62S sideLED lightbox 780 +++++ +++++	124D sideLED lightbox 781 +++++ +++++	186D sideLED lightbox 786 +++++ +++++

62s sideLED lightbox

The 62s is our only single sided lightbox in the range with a width of 62mm which fits perfectly with b62 frames. This makes it the perfect building block in your range. Thanks to the powerful improved sideLED modules, a very **visible item that can change your design** immediately.



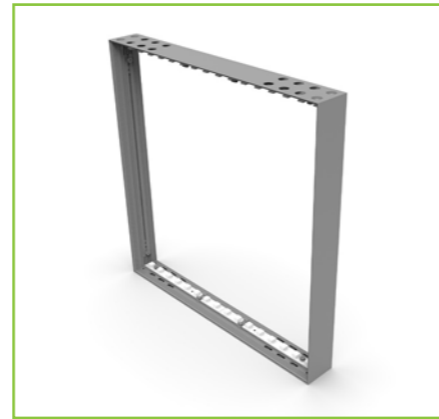
To ensure the stability of the frame we advise a maximum dimension of 992 × 2976 mm. If there is extra support from the surrounding frames, your construction can go up to 1488 × 2976 mm.



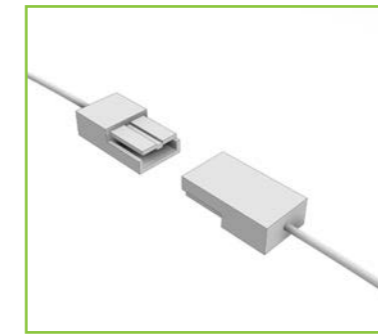
124D sideLED lightbox

Our newest innovation in the lightbox range is the 124d sideLED lightbox. It works as a building block in your beMatrix range and is now **more modular than ever!**

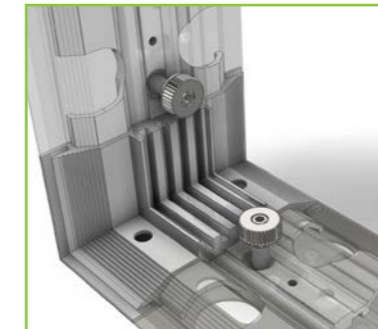
It's lower and thinner profile ensures that there is less chance of shadow and that the light output is bigger and better. The lightbox is easy to mount and can also go infinitely wide thanks to intermediate tubes that guarantee you strength in your construction.



The 124D sideLED lightbox has an **adjusted lighting beam** that allows you to illuminate at a shorter distance on two sides and therefore also has a bigger light output and can be perfectly used in bigger designs.



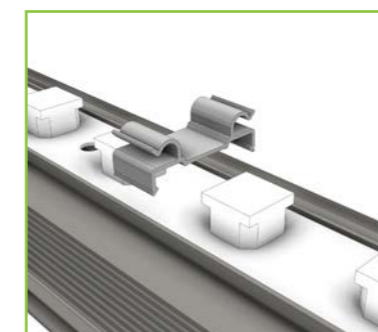
The lightbox has a **non-binary end** to the inserted LED that perfectly fits its own built-in transfo. This means, no more hassle with male and female ends of cables!



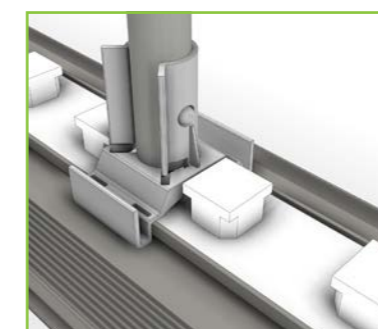
Technical innovation: we replaced the joining set of 48 screws with an **aluminium corner piece**. Just slide the profile in and fasten it with 2 screws.



All profiles are sawn off straight to support modularity. By using a 180° connector, you can easily join 2 straight profiles together to have another size of lightbox.



The LED strip is secured with handy clips that also provide cut-outs for clamping cables. This ensures easy cabling.



Intermediate tubes are provided for larger structures. These are attached with clips.

The 124D lightbox is perfectly combinable with our beConstruct profile. Read our brochure 'Xtreme' on www.beMatrix.com.



186D sideLED lightbox

The 186D lightbox is a double sided lightbox with a width of 186 mm. This **ensures you stability** in your design and is especially created for bigger light constructions where strength is key.



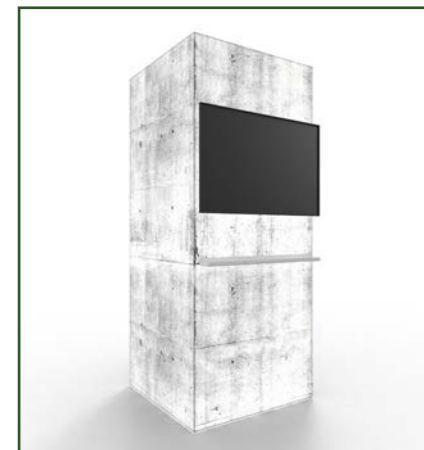
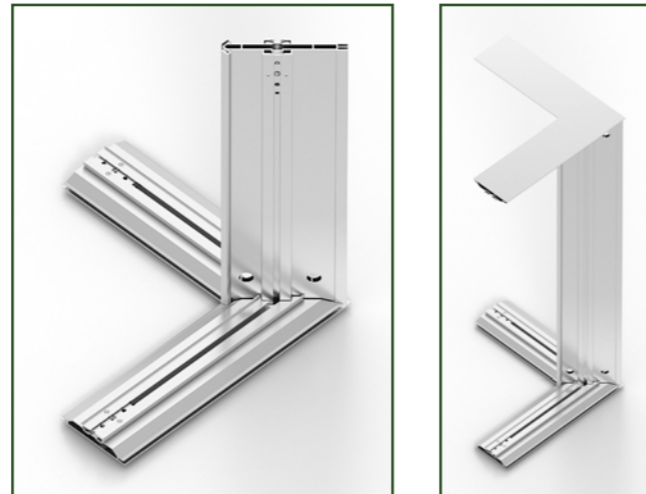
If you want to have a broader look on your lightbox and your stand, this is the perfect lightbox to use! You can either **integrate it** or **use it as a standalone object.**



Lightbox extensions

124D Perfect Corner Lightbox

Eliminate blind spots with the 124d Perfect Corner Lightbox. The tripod is a **434×434×496 welded and double sided 90°** corner structure. Combine 2 pieces, top and bottom, and add 124d profiles with the 180° connector set (781 001) to build a Perfect Corner Lightbox that you can finish on both sides.



We also have a **fully welded perfect cornerframe** in standard dimensions available. You have to combine 124d profiles with the 180° connector set (781 001) to build a Perfect Corner Lightbox.

Flatscreen bracket

Hang a TV on the visible side of the Lightbox thanks to a special Lightbox Flatscreenbracket. This bracket can be attached to the standard intermediate tubes. **Pro tip:** this setup can also be used to mount a tv in a curved frame.

Shelves & brackets

Create additional display space in front of your lightbox with our 310mm long shelf. You can mount it in front of the lightbox canvas using the **Lightbox bracket with one or two magnets** (article 781 016 or 781 017).

This shelf can easily be mounted on the support bracket. This way, no notches need to be made in the textile. Maximum permitted weight of 1 kg per magnet.



124D Poweredled side set

270 00 08 SET

This set of 2 LED strips of 178mm serves to fill the remaining part of the 124D Lightbox when the standard LED strips are too long.

Lightbox flatscreen bracket

781 018 SET

124D Lightbox support set

801 +++++ SET

Use when you want to extend your 124D Lightbox.
OR

Tube D20/A.5 + spring connector

801 +++++ 0010

781 019 SET

Use when you want to extend 124S, 168D, a b62 frame or put a flatscreen bracket in a curved frame.

Lightbox bracket with 2 magnets

781 017

AND

Lightbox straight shelf [0310 MM] Grey

901 36 0310 SHELF TG

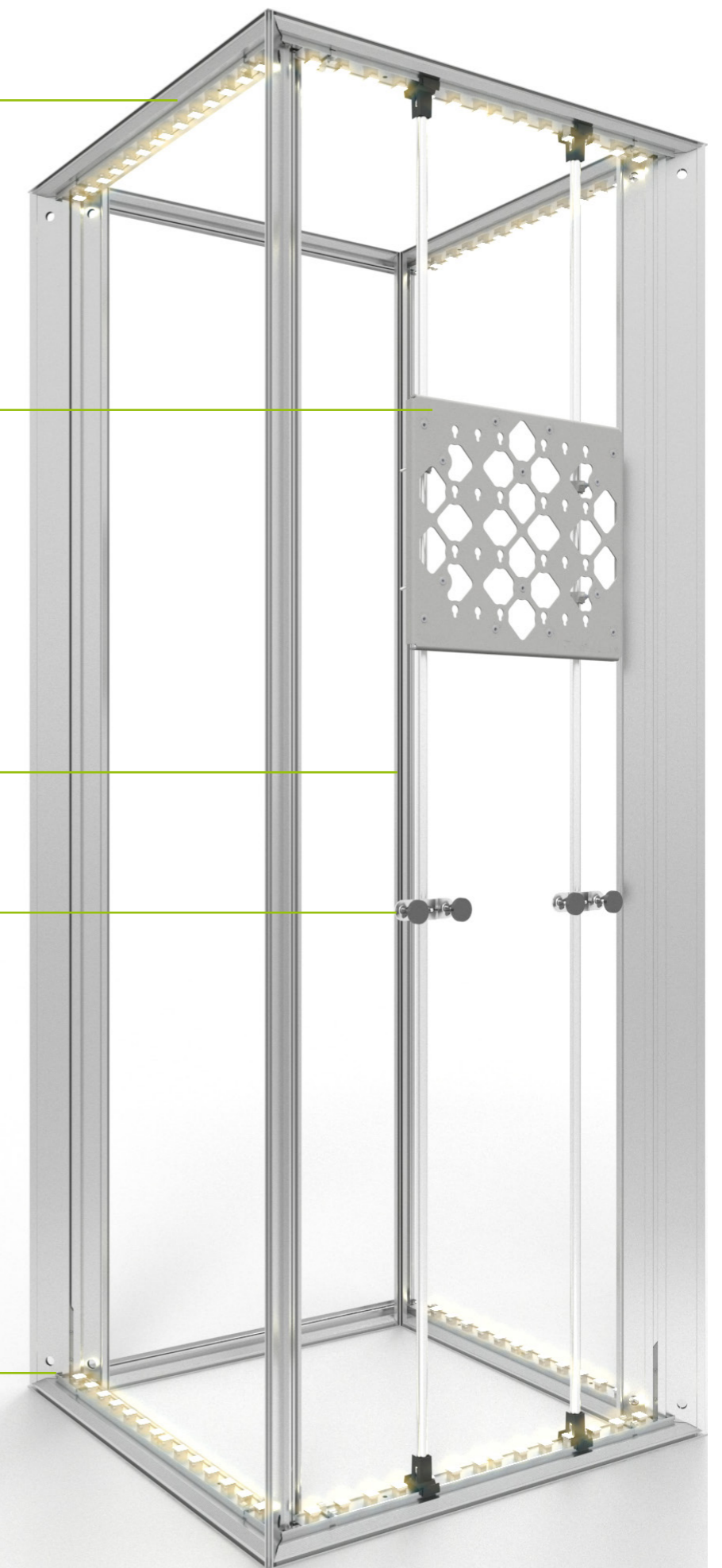
124D Perfect Corner Lightbox - Tripod

782 000

OR

124D Perfect Corner Lightbox - Cornerframe

782 001 +++++



beMatrix

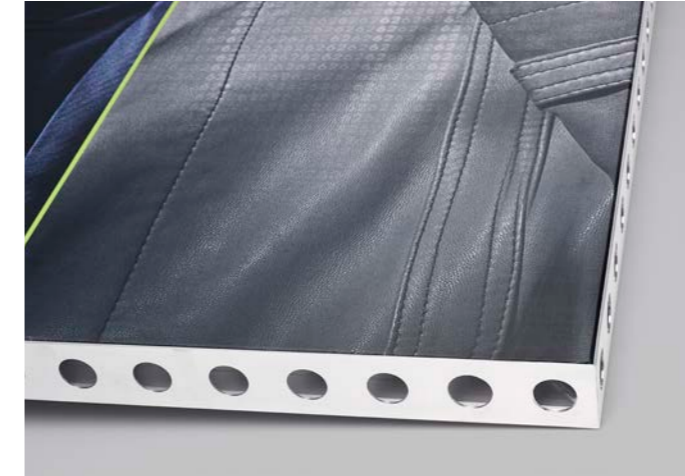


The 8 beMatrix principles



Quality guaranteed

All beMatrix frames are manufactured in-house, so we are in control of every step in the production process. Continuous optimisation and innovation initiatives ensure the system always complies with the market's demands.



Top finishing

The beMatrix stand building system comes with a large range of tools and accessories to finish your stand exactly the way you envisage it. With the infills, you can even hide the entire frame system so it becomes invisible to the eye. Thanks to our 'seamless' concept, not one seam will be noticeable.

Freedom to design

A beMatrix stand combines the benefits of a modular system with the possibilities of made-to-measure solutions. Almost any shape, contour and construction is conceivable and can easily be created. One single frame allows you to create all different kinds of stand concepts.



Lightweight

The aluminium frame system is lightweight, hence very ergonomic and eco-friendly: no need for the stand builder to carry around heavy structures, while the transport weight and CO2 emissions remain low.



Fast

Assembly and disassembly of the beMatrix system takes hardly any time. Its weight, simplicity and tool free assembly save loads of time, leaving you space to focus on the finishing details of your stand. Isn't that what makes you stand out most at a fair?

Long life cycle

The system is extremely sturdy, making it endlessly reusable. Wear and tear won't shorten its life cycle, since the frame is not visible to the eye once the entire stand is set up.

Ecologically sound

Because of its low weight, long life cycle and modular character, the beMatrix frame system is the eco-friendliest system today. Moreover, it is made out of untreated aluminium, so 100% recyclable and reusable without any quality losses.

International network

The bePartner network brings together real ambassadors of the beMatrix frame system, each with their own expertise: stand building, textile printing, LEDskin®, Double Deck... A creative cross-pollination offering you as our client nothing but benefits.



bePartners at your service

bePartner LEDskin®

Our LEDskin® bePartners all stock a minimum amount of LEDskin® and have years of expertise in the audiovisual industry. They are more than happy to help you perfectly integrate LEDskin® in your beMatrix stand.

bePartner printed textiles

Printing customised textiles takes real precision. Our bePartners for printed textiles have proven they totally master this specialised skill and guarantee perfect service, time and again.

bePartner build

Our bePartners build have a large stock of frames and accessories, integrate our latest innovations, are able to think outside the box and consider optimal service to be of paramount importance.

bePartner LEDskin® content

Do you already have LEDskin® available, but are you still looking for a partner to help you with content? Our content partners will advise and assist you, from content creation up to and including optimal display quality on your LEDskin® system.

bePartner printed panels

Printing infill panels for our beMatrix frames might seem simple, but this specialised job really has to be executed in a very precise way. Our bePartners for printed panels have already proven they totally master this specialised skill and guarantee excellent service, time and again.



be strong ↔ **be stylish**
be anything.

Come say hi

HQ Belgium
Wijnendalestraat 174
8800 Roeselare

get in touch

+32 (0)51 20 07 50
info@beMatrix.com

or boost your inspiration

www.beMatrix.com
socials @beMatrix
f **t** **in** **o** **v**