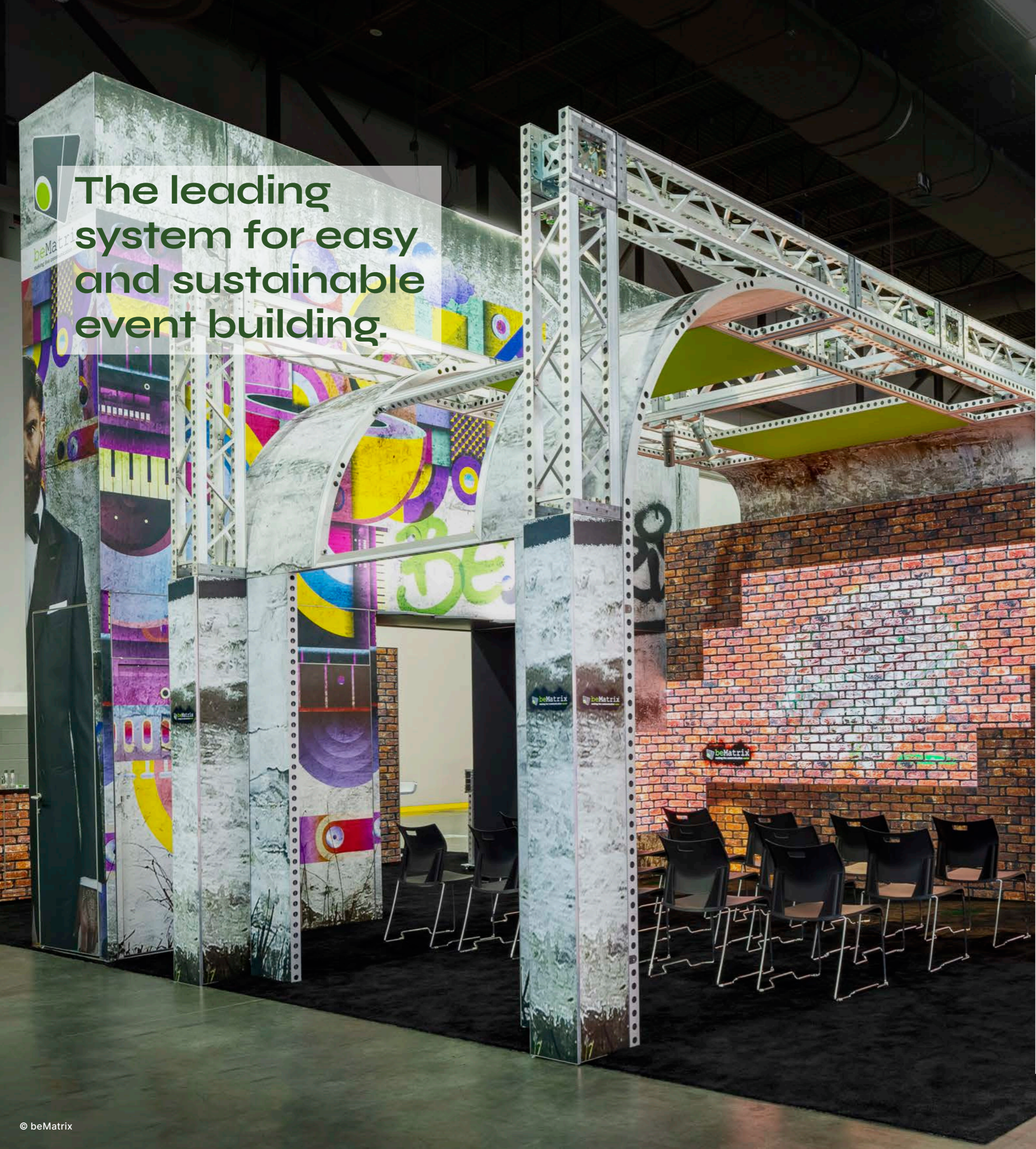


XTREME SOLUTIONS

be anything.

EN





The leading system for easy and sustainable event building.

Easy and sustainable event building
b62°
Why beMatrix?

4
6
7

Product principles

Spans

beConstruct

Non-load bearing
designs with beConstruct

18
18

beTruss

Patented design
Structure
Target load tables

26
28
34

Double Deck

The first 'system integrated' Double Deck
Structure
Finish
Double Deck set

44
46
56
58

Support

Logistics
MybeMatrix
Global Rental Network
Contact

67
68
70
72

Easy and sustainable event building

beMatrix is the true heir and Belgian manufacturer of the original frame system with big holes, launched in 1993. beMatrix leverages the event industry towards positive transformation with a higher convenience and return for customers in a sustainable manner.



Our mission is to be the leading system for easy and sustainable event building.

The beMatrix system offers event builders and exhibitors endless possibilities with endless kinds of concepts for exhibition stands, congress walls, indoor and outdoor events and pop-ups.



A sustainable step forward: frames with ECO+ finish.

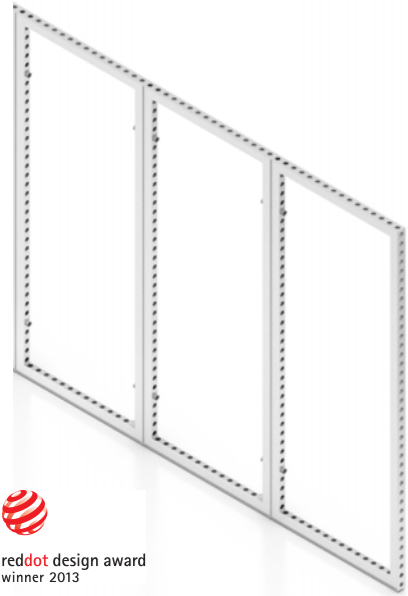
beMatrix introduced the ECO frame as an ecological alternative to the anodised frame. Anodising is a chemical surface treatment harmful to the environment. We invented a brushing technique with the same look as the end result, but without environmental risks.



Do you want more information on our efforts to minimise our impact on the environment? Read our **Sustainability Charter** on www.beMatrix.com.

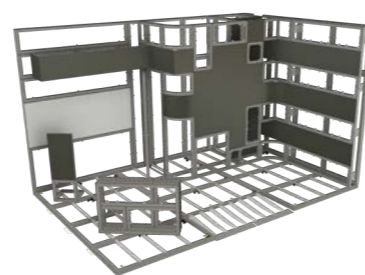


b62[®]



All dimensions of the b62[®] frame system have been based on the perfect **62 × 62 mm matrix**. The width, length and height of the constructions are always multiples of 62.

The 62 mm matrix delivers the ultimate **modularity** with countless configuration options.



Why beMatrix?

Fast & easy design and build-up

Faster and easier than assembling a traditional profile-based system, light weight and no tools needed!

High return on investment

The same frame can be used for walls, ceilings and floors. Since assembly is quick and easy, labour costs can be cut.

Sustainable system

Frames can be reused over and over again. They are also recyclable with minimal energy and without any loss of quality.

International network

There is always someone around who can assist you in the beMatrix network; beMatrix operates worldwide.

Local service and stock close to you

We have rental and service centres worldwide to support you with rental equipment, training or build-up support .



J
JETIMPORT
YOUR BEVERAGES IMPORTER

RED BULL MET
KIWI SMAAK.



ROJKA

DESPERADOS

Product
principles

10

1



b62

The 62 mm grid assures a perfect fit in any direction. Create any shape imaginable.

2



Toolless

Hardly any tools needed. The fastest system to build.

3



System & custom

Unique merge of the modular system and custom elements.

4



ECO surface treatment

Brushing process that does not harm the environment.

8



Keep the body, change the skin

Endlessly reusable, just change the graphics!

7



beMatrify, our DNA

Easy to finish (panels/textile) and always connectable to the rest of the system.

6



Welded frames

Lighter, stronger and faster assembly than standard frames.

5



360°

Use the frame for walls, ceilings and floors. It harmoniously blends into one.



spoons

20

In the world of live events and exhibitions, we've noticed the desire of our clients to build bigger. These types of designs **demand more load bearing capacity on the structures**. Let's take a look at the different beMatrix options to build small, medium or large spans in a safe and efficient way.

Small spans

For small and limited spans you're all set using the **b62 frames** combined with the **corner profile square 62**.



Large spans

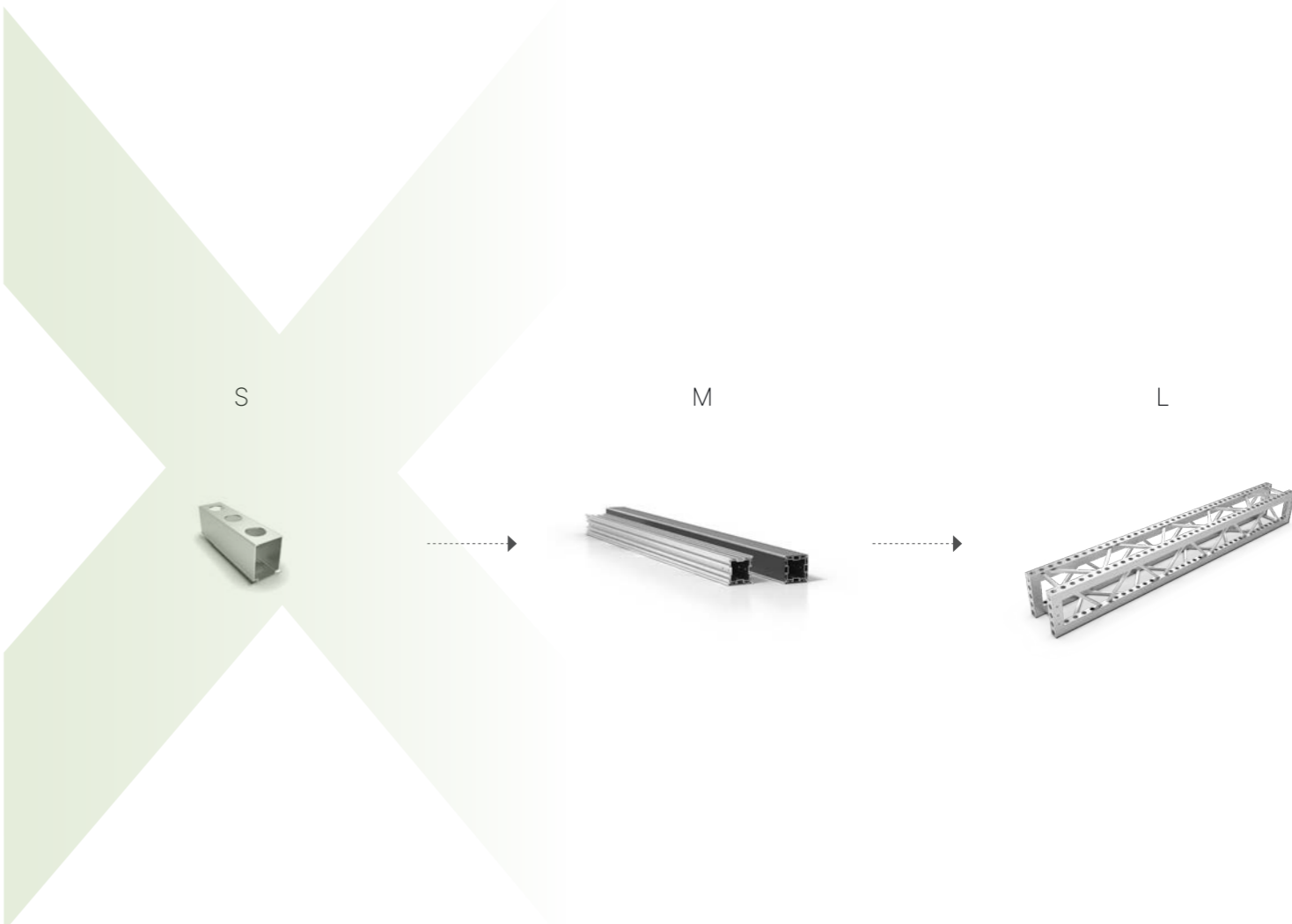
Want to take your build a step further? Is your design **load bearing**? Then **beTruss** is your solution for large spans. It's even possible to add LEDskin® tiles to the beTruss provided that LEDskin® and beTruss are built at the same time.



Medium spans



For medium spans that **do not carry heavy items** like LEDskin® (not load bearing), we recommend using **beConstruct**, our newest construction profile.

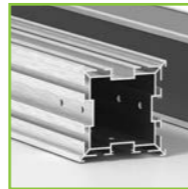




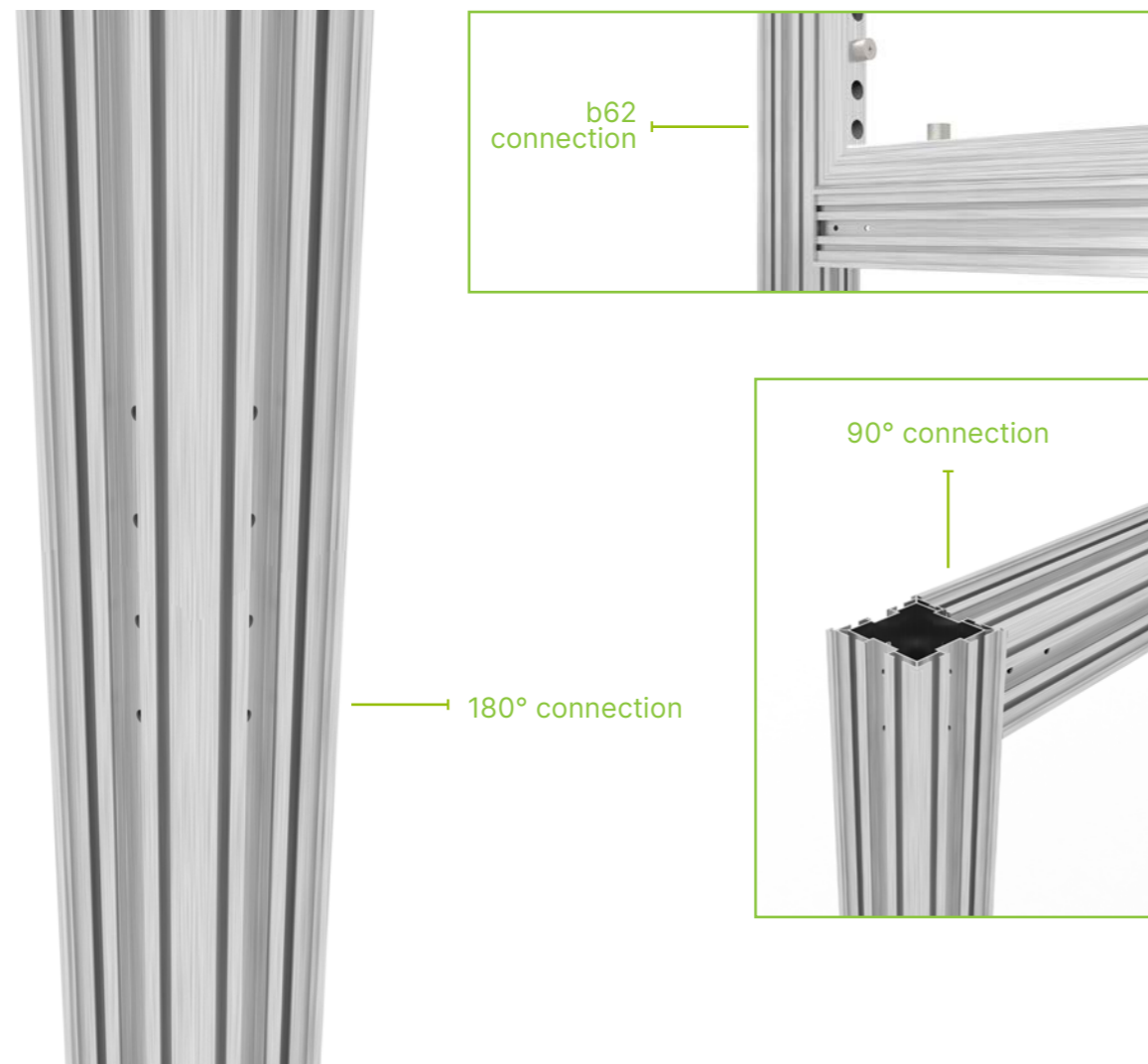
be-construct
30

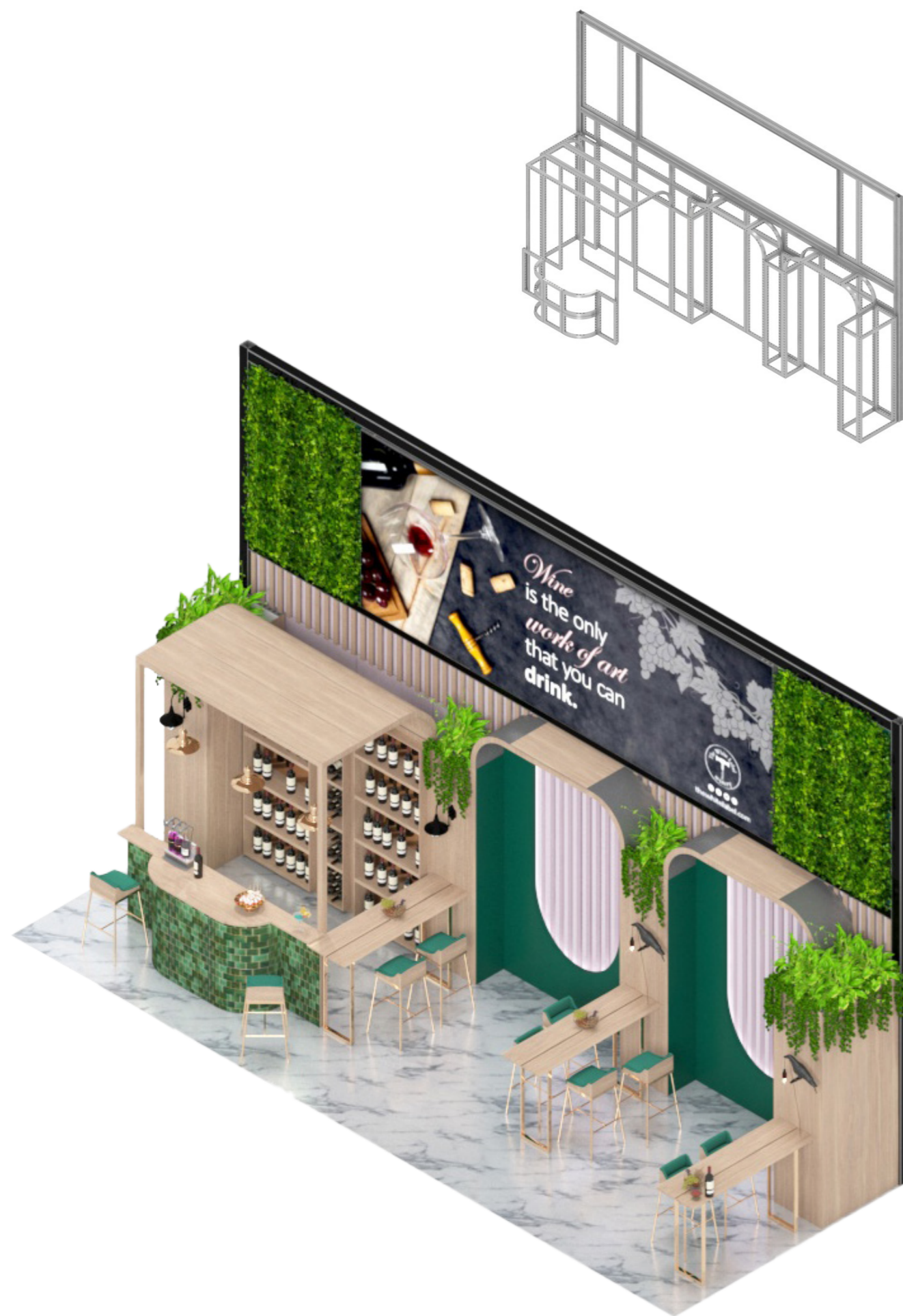
Non-load bearing designs with beConstruct

beConstruct is our new construction profile that **lets you build big and open non-load bearing constructions**. It's the perfect solution for designs that require more than just frames but less than beTruss. The dimensions of beConstruct are **124 mm by 124 mm** making it fit perfectly within the be-Matrix system (where width, length and height are always multiples of 62).



Our new beConstruct construction profile is **lighter to build with** compared to Double Deck's poles & beams. This means faster build times and reduced labor costs. You can build in both 90° (=corners) and in 180° (=extensions) directions. Use the D30 slot connector to hang b62 frames on it. The **migration between beConstruct and b62 frames** opens many design opportunities in the exhibit and event industry.





Adding lighting to your design is a piece of cake. The cross section of the beConstruct profile includes a notch to slide in a **Track Light Profile** into it. Even better: there's a channel on the inside where you can hide the cables. They are secured with a clip.



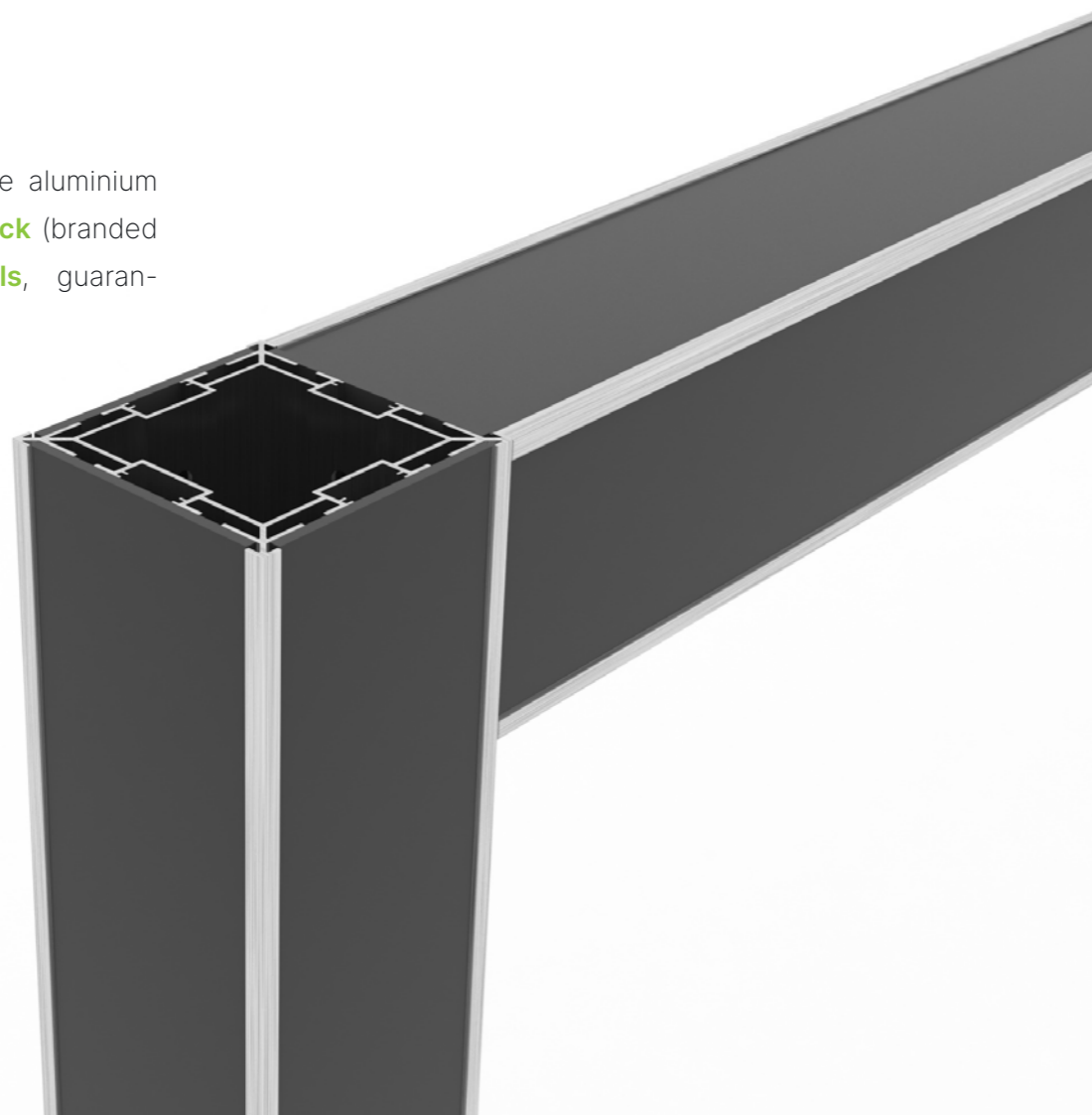
With lighting, you can get as creative as you want! Our ultimate tip is to **mount a LED strip in the construction profile**. This will accentuate the poles and emphasise the straight lines in your stand. You undoubtedly stand out head and shoulders in the exhibition hall!



Other connectors make it possible to **add different lighting solutions** such as SAM Light and BIG SAM Light. Thanks to the M8 hammer nut you can also attach a **124d lightbox** to your construction.



Finish the 4 sides of the aluminium profile by using **3mm thick** (branded or non-branded) **panels**, guaranteeing you a sleek result!



Load tables available on request.

beConstruct is available for purchase and for rent through our Global Rental Network!



boetruss
40

Patented design

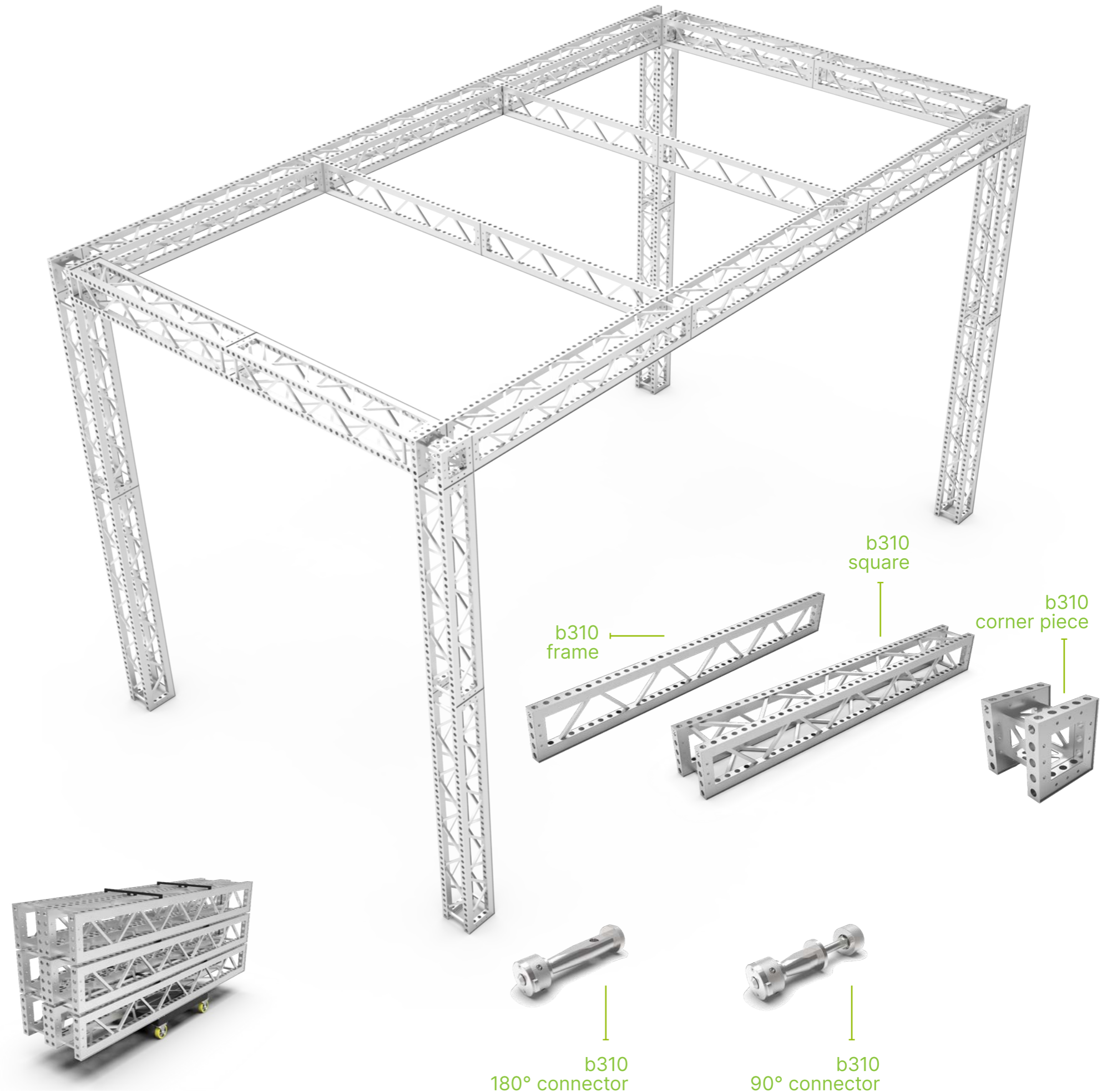
b310, beMatrix DNA

beTruss allows you to **build stands of any size**, no matter how big, with one single (stand construction) system. No more breaking a sweat over mounting points! From now on, you can erect your load bearing stand with ease, in no time at all.

Identical to the b62 frame system, all dimensions are based on **62 × 62 mm**, so perfectly usable with existing frames thanks to the especially designed load bearing connector.

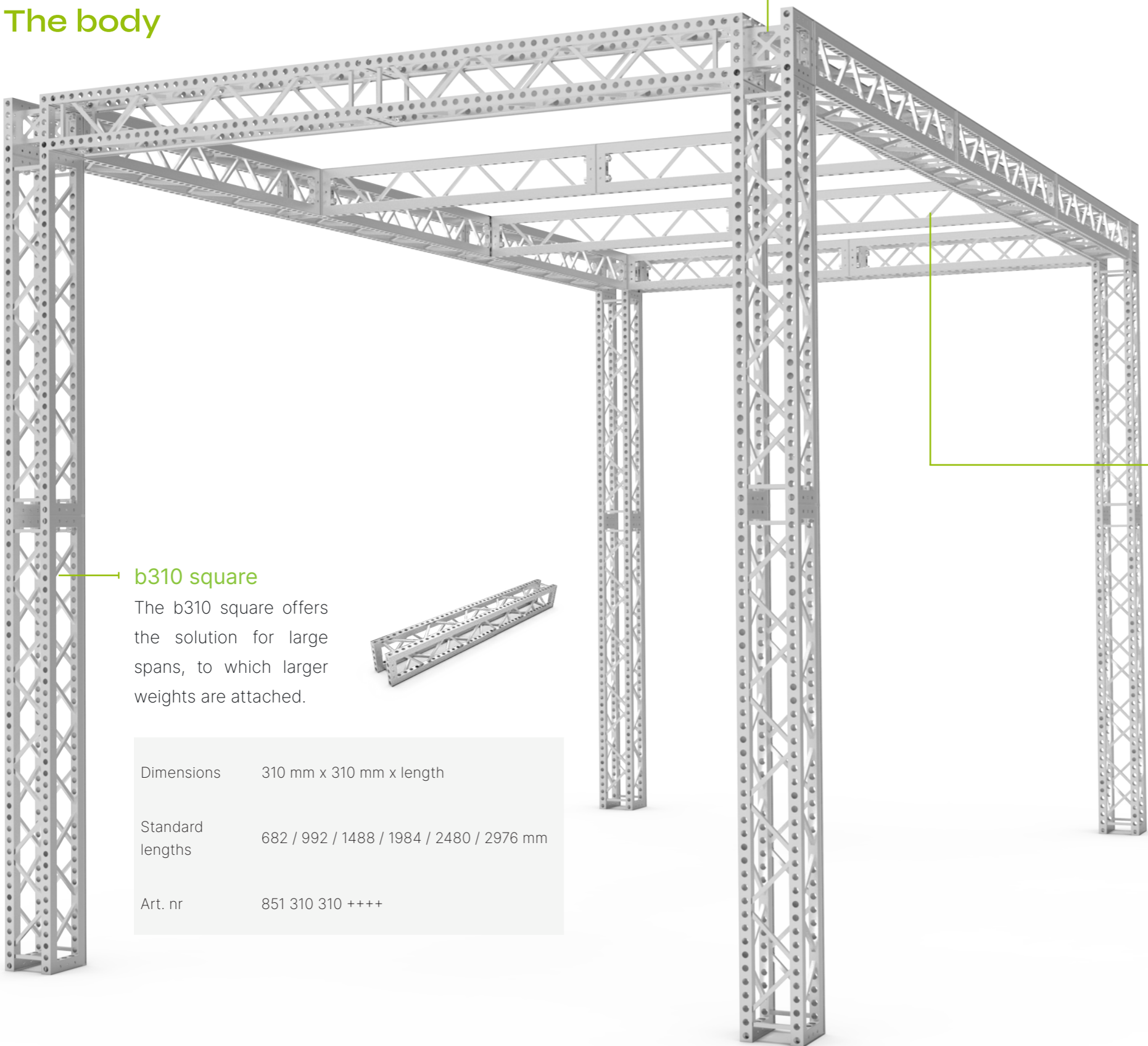
beTruss has the same **modular beMatrix DNA** and therefore all its benefits:

- 62 mm dimensions and D30 holes, enabling a perfect integration with the existing beMatrix range (frames, LEDskin®, lightboxes, etc).
- Both panels and textile can be attached to the b310 range, allowing the entire stand to get the same finish.
- Your stand design will be ready in no time. All necessary components are waiting for you in the beMatrix library, ready to start.
- But most of all: the assembly will be fast and simple, since you will only need one system to set up the entire structure.



Structure

The body



b310 square

The b310 square offers the solution for large spans, to which larger weights are attached.

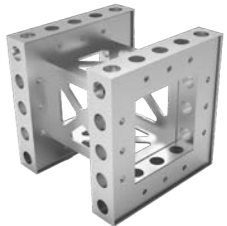


Dimensions	310 mm x 310 mm x length
Standard lengths	682 / 992 / 1488 / 1984 / 2480 / 2976 mm
Art. nr	851 310 310 + + + +

b310 corner piece

Corners and cross connections are made using the b310 corner piece. The connection of the corner piece is done by means of two toolless connectors for large or small holes.

Dimensions	310 mm x 310 mm x 310 mm
Art. nr	852 310 310 310



b310 180° connector

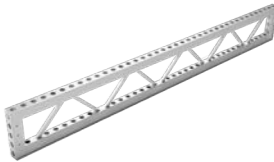


b310 90° connector

b310 frame

The b310 frame is designed to provide the necessary bearing capacity to the structure, within the same 62 × 62 mm dimensions, where the strength of the b62 frame is insufficient.

Dimensions	62 mm x 310 mm x length
Standard lengths	682 / 992 / 1488 / 1984 / 2480 / 2976 mm
Art. nr	850 62 310 + + + +



b310 180° connector with automatic locking system

The skin

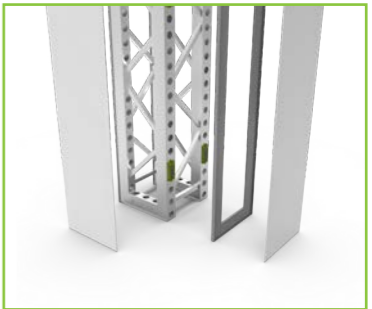
LEDskin®

beTruss is compatible with the full beMatrix range. It is therefore no surprise that LEDskin® can perfectly be integrated to the structure.



Panel

The b310 range can be finished with 3mm thick panels.



Seamless textile


For a seamless result, you can cover the sides with textile.



The b310 square & b310 corner piece can be fully finished with panels and textile by using the perfect cover on 2 of the 4 sides.

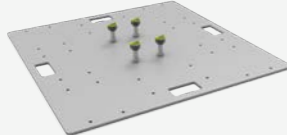


The add-ons




Baseplate
(use to compensate height difference)

Art. nr 901 28 0706



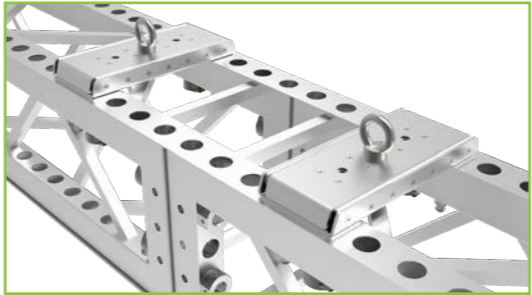
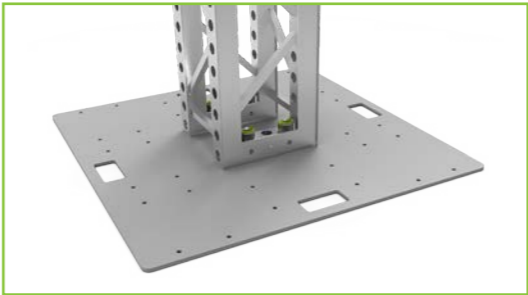
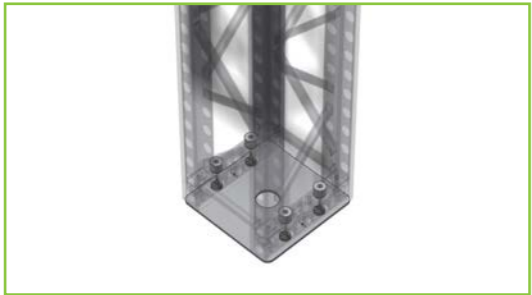
Baseplate
(use as a standalone for extra stability)

Art. nr 901 28 0707



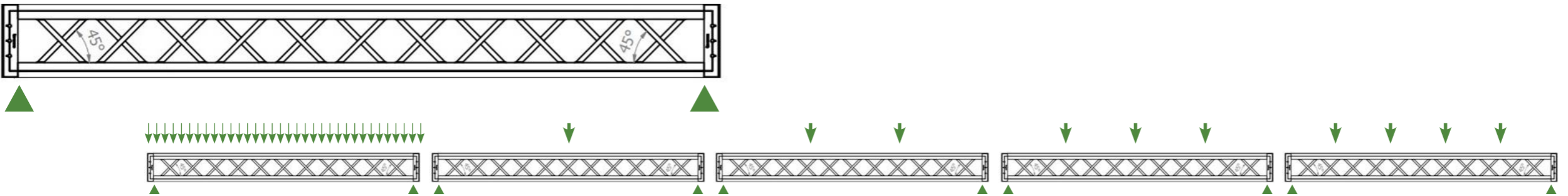
Hanging bracket
(b310 square)

Art. nr 901 28 0704



Target load tables

b310 square, direction 1



SPAN (m)	UDL (kg/m)	Deflection (mm)	CPL (kg)	Deflection (mm)	TPL (kg)	Deflection (mm)	QPL (kg)	Deflection (mm)	FPL (kg)	Deflection (mm)
3	385.0	2.43	923.3	3.56	560.1	3.27	385.0	3.27	288.7	3.07
4	286.9	7.08	808.1	7.45	505.9	7.76	382.5	8.04	286.9	7.95
5	228.1	11.73	703.1	11.34	455.4	12.24	347.6	12.80	272.6	12.83
6	188.9	16.37	608.2	15.23	408.8	16.72	306.1	17.57	243.6	17.70
7	160.6	24.33	523.6	20.84	365.8	24.41	268.6	24.84	216.9	25.49
8	120.2	32.29	449.2	26.45	326.7	32.09	235.2	32.12	192.4	33.28
9	93.0	40.25	384.9	32.06	291.3	39.78	205.8	39.39	170.3	41.07
10	74.0	50.85	330.9	39.67	259.6	50.32	180.4	48.96	150.5	51.20
11	60.2	61.45	287.0	47.28	231.8	60.86	159.1	58.53	132.9	61.34
12	48.8	72.06	253.3	54.89	207.7	71.40	141.8	68.09	117.7	71.48
13	41.9	86.74	229.8	68.92	187.3	85.57	128.6	83.68	104.8	84.50
14	35.6	101.4	216.6	82.95	170.7	99.75	119.3	99.26	94.1	97.53
15	30.7	116.1	213.5	96.98	157.9	113.9	114.1	114.8	85.8	110.6

Excluding frequent Use factor (0.85)

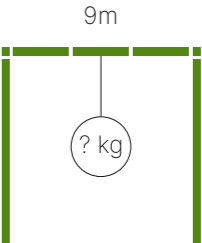
UDL: Uniform distributed load / CPL: Center point load / TPL: Tripple point load / QPL: Quarter point load / FPL: Fifthpoint load

- Loading table only valid for static loads
- Loading table only valid for single spans with support at both ends.
- The self weight of the truss is already taken into account
- Loading table are calculated according and in compliance with to European standard (Eurocode EN1990)
- Loading table excluding frequent use factor
- Truss spans can be assembled from different truss lengths
- Loading table & defelections are based on good assembled and aligned connectors
- All static stsytems other than single spans need an individual structural calculation.
Please contact a structural engineer or beMatrix for assistance.

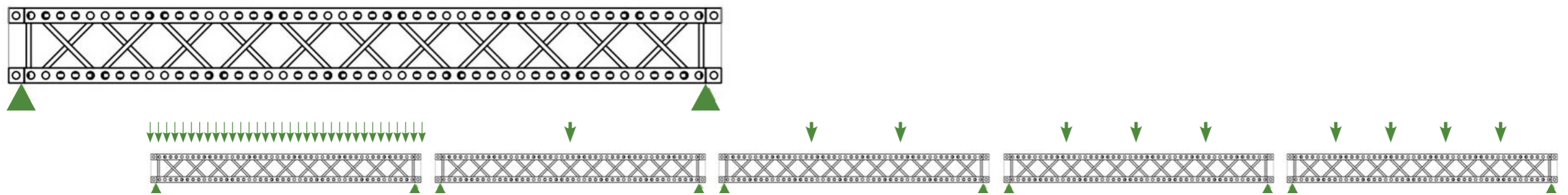
Example

What is the maximum weight & deflection in the middle of the beTruss at a span of 9m?

= 384,9kg x safety factor 0,85
= 327,2kg with a deflection of 32,06mm
Less deflection thanks to the use of beTruss.



b310 square, direction 2



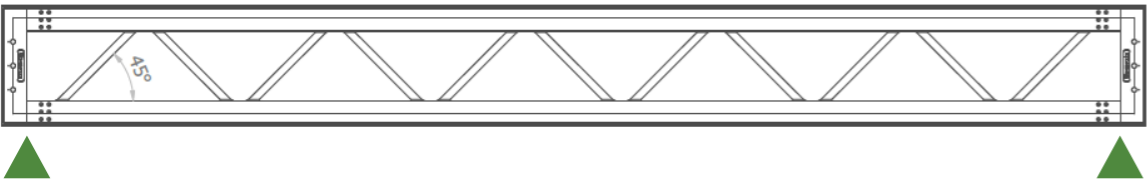
SPAN (m)	UDL (kg/m)	Deflection (mm)	CPL (kg)	Deflection (mm)	TPL (kg)	Deflection (mm)	QPL (kg)	Deflection (mm)	FPL (kg)	Deflection (mm)
3	149.7	1.17	419.3	1.93	218.2	1.58	149.7	1.61	112.2	1.54
4	110.4	3.12	335.7	3.46	194.5	3.58	147.3	3.90	110.4	4.04
5	86.9	5.07	268.0	4.98	172.4	5.59	132.5	6.19	103.9	6.53
6	71.2	7.01	213.8	6.50	151.8	7.59	114.7	8.49	91.4	9.03
7	60.0	10.82	170.9	8.82	132.7	11.45	98.4	12.48	79.8	13.49
8	47.1	14.63	137.4	11.14	115.1	15.30	83.7	16.48	69.1	17.94
9	35.9	18.43	111.3	13.46	99.0	19.16	70.7	20.48	59.3	22.40
10	27.2	22.60	90.9	17.39	84.4	25.08	59.2	27.02	50.4	29.68
11	20.7	26.78	74.5	21.32	71.3	31.01	49.4	33.57	42.5	36.97
12	16.0	30.95	60.9	25.25	59.7	36.94	41.2	40.11	35.4	44.25
13	12.6	37.01	48.6	30.69	49.6	45.64	34.5	50.39	29.3	54.48
14	10.0	43.08	36.6	36.12	41.0	54.35	29.5	60.67	24.0	64.70
15	8.0	49.15	23.7	41.56	33.9	63.05	26.2	70.96	19.7	74.93

Excluding frequent Use factor (0.85)

UDL: Uniform distributed load / CPL: Center point load / TPL: Tripple point load / QPL: Quarter point load / FPL: Fifthpoint load

- Loading table only valid for static loads
- Loading table only valid for single spans with support at both ends.
- The self weight of the truss is already taken into account
- Loading table are calculated according and in compliance with to European standard (Eurocode EN1990)
- Loading table excluding frequent use factor
- Truss spans can be assembled from different truss lengths
- Loading table & defelections are based on good assembled and aligned connectors
- All static stsytems other than single spans need an individual structural calculation.
Please contact a structural engineer or beMatrix for assistance.

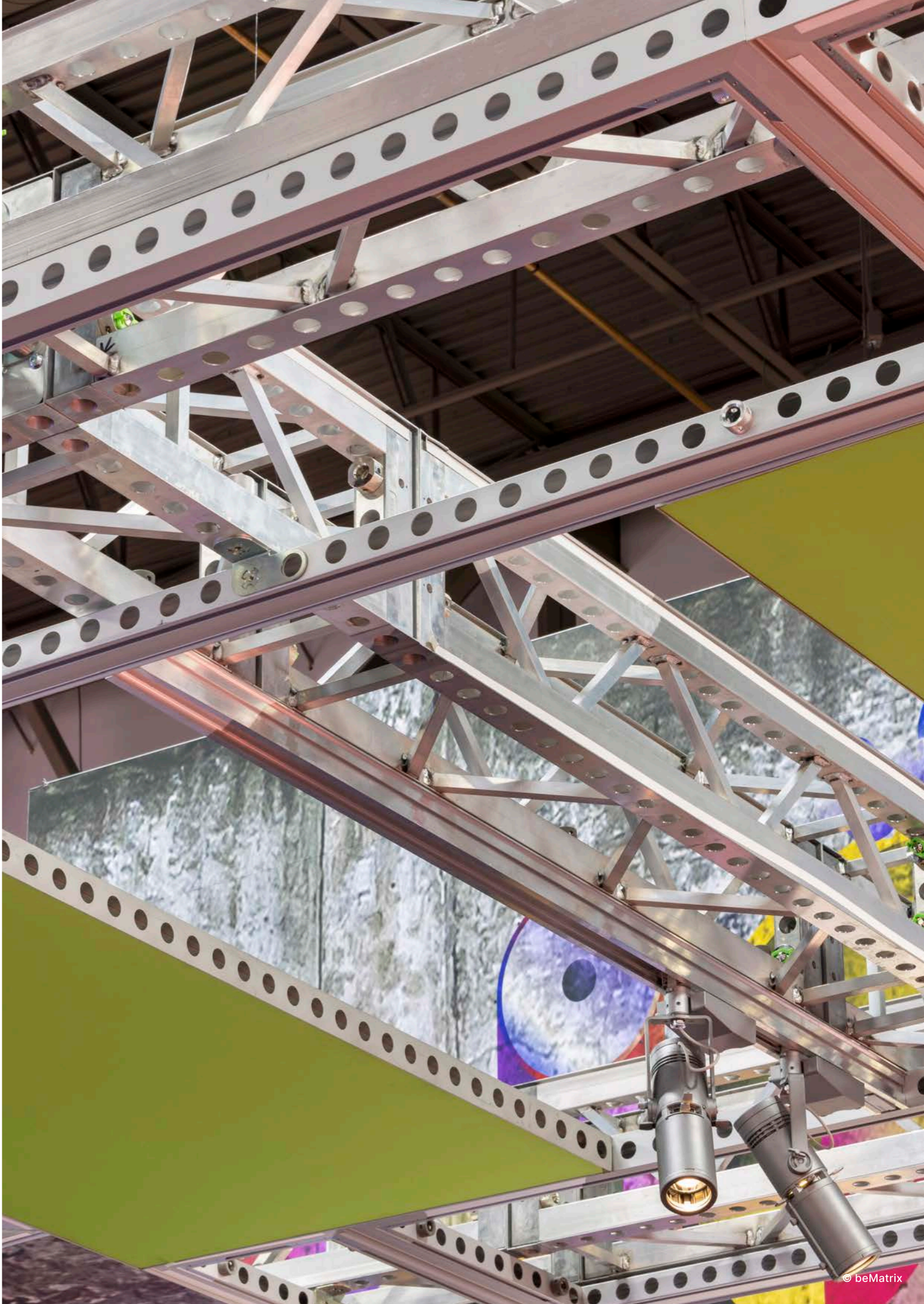
b310 frame



span (m)	UDL (kg/m)	deflection (mm)	cpl (kg)	deflection (mm)
1	716.7	0.5	716.7	1.0
2	356.8	1.2	453.7	1.5
3	138.3	1.8	245.8	1.9
4	70.5	2.9	159.2	2.9
5	41.7	4.1	113.6	3.8
6	27.2	5.2	86.2	4.8
7	19.0	7.2	68.3	6.4
8	13.9	9.2	55.8	8.1
9	10.5	11.2	46.7	9.8
10	8.2	14.8	39.8	12.9
11	6.6	18.4	34.6	15.9
12	5.4	22.0	30.3	19.0

Excluding frequent Use factor (0.85)
UDL: Uniform distributed load / CPL: Center point load

- Loading table only valid for static loads
- Loading table only valid for single spans with support at both ends.
- The self weight of the truss is already taken into account
- Loading table are calculated according and in compliance with to European standard (Eurocode EN1990)
- Loading table excluding frequent use factor
- Truss spans can be assembled from different truss lengths
- Loading table & defelections are based on good assembled and aligned connectors
- All static stsytms other than single spans need an individual structural calculation.
Please contact a structural engineer or beMatrix for assistance.





 **beMatrix**
making live communication easier

OUTDOOR **EXPO**

Location des
P
Pop-Outs
vides
OU
avec
aménagement
extérieurs et
intérieurs
Contact
outdoor-expo.eu
hello@outdoor-expo.eu

Première mondiale

Pop-Out

Le premier module
pour contenir

Interne
monnaie
avec
beMatrix



Double
Deck



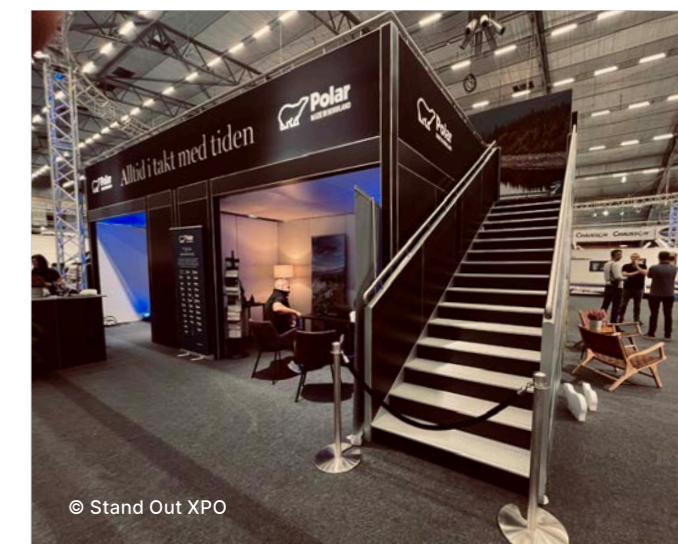
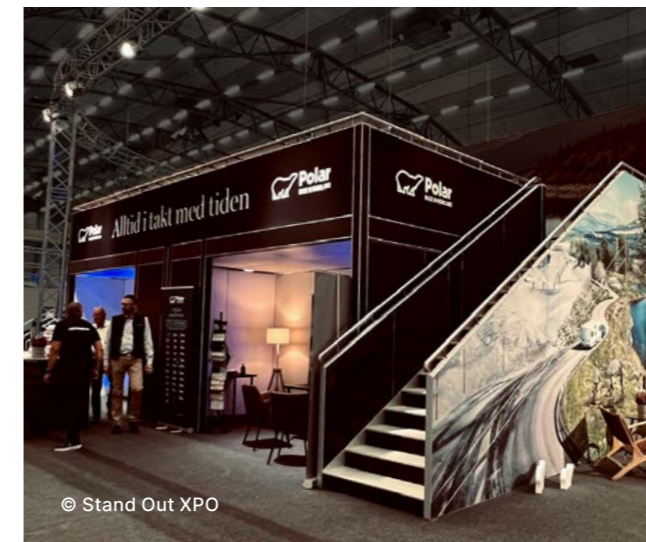
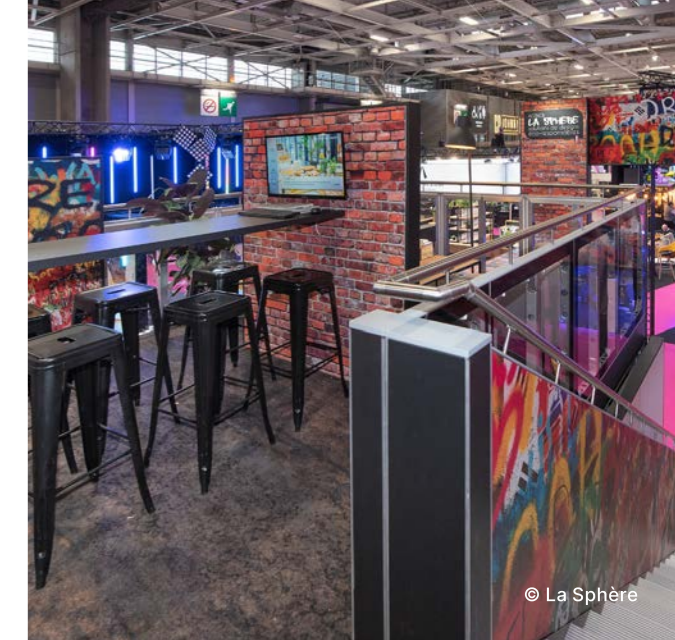
The first 'system integrated' Double Deck

Double Deck, beMatrix DNA

A second floor really allows you to get everything out of your stand's surface. beMatrix' Double Deck system doesn't only increase the number of square footage, but is also **wholly compatible with existing product ranges** (frames, LEDskin®, lightboxes, etc.), easy to integrate and to finish with the beMatrix frame system. That way, the structure and look and feel of your stand totally come together! beMatrix provides all the support you need to set up your stand.

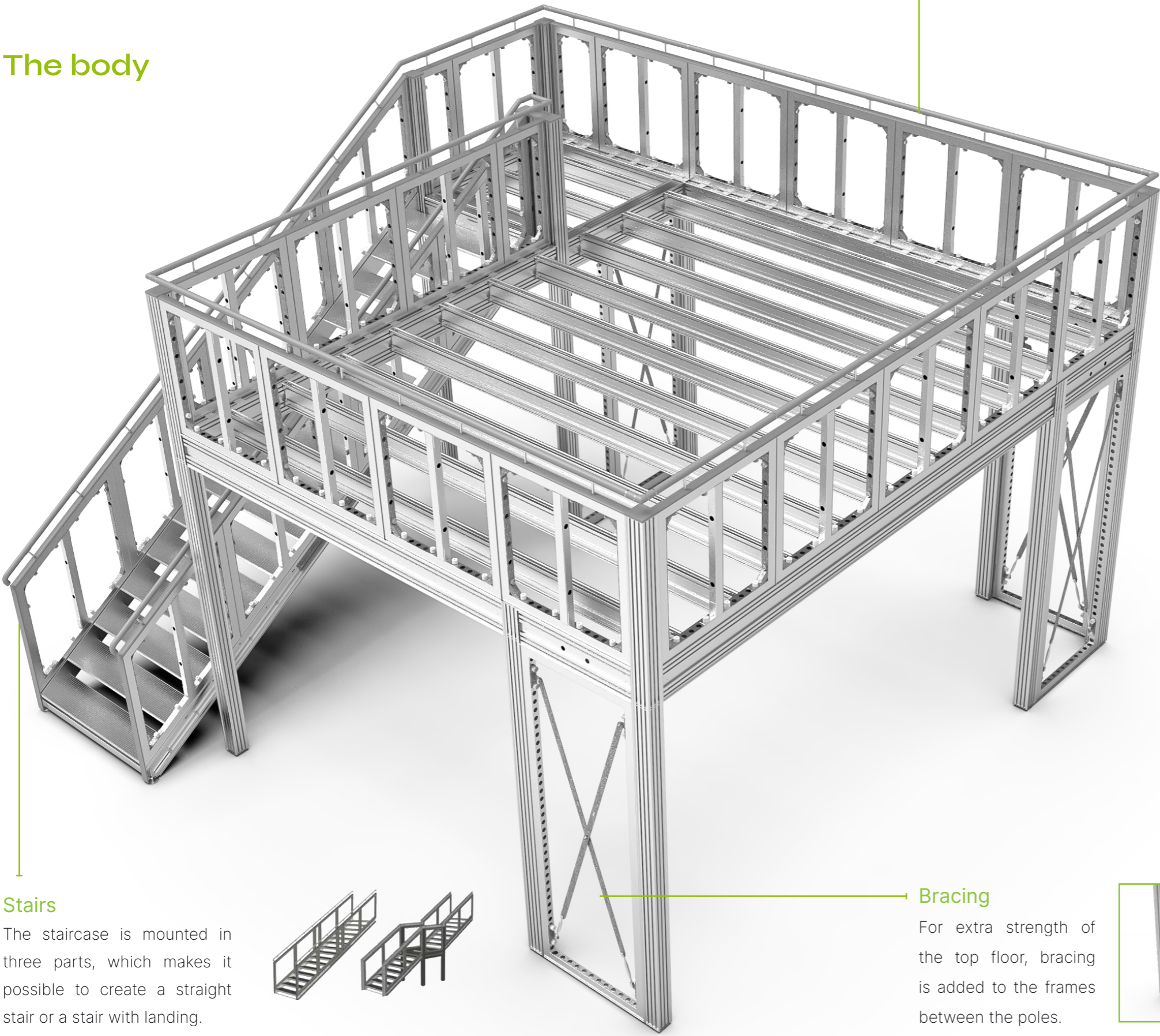
The Double Deck structure can be **finished with both panels and textile**, allowing the entire stand to get the same finish.

Stability, safety as well as perfect aesthetic integration are equally important. We will make sure your stand looks impeccable and is compliant with all rules and regulations.



Structure

The body



Railing

Standard b62 frames are used as railing. Reinforcement brackets are mounted in every corner of the frames for support. A rounded cover and stainless steel handrail are added on top of the frames.



Optional:

We offer a glass railing solution (excl. the glass itself) to spice up your Double Deck. This railing consists of a U-profile that you attach with connectors. The glass can be put onto the U-profile.



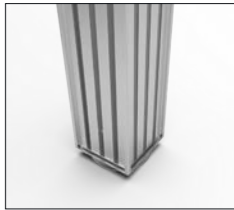
Structure

A Double Deck is created with primary & secondary beams and poles. They can easily be connected as it is based on a coupling system avoiding the time consuming fastening of bolts and nuts.

PRIMARY BEAM

SECONDARY BEAM

POLE



Stairs

The staircase is mounted in three parts, which makes it possible to create a straight stair or a stair with landing.



Bracing

For extra strength of the top floor, bracing is added to the frames between the poles.



The skin

Finishing the railing

LEDskin® tiles, lightboxes, higher frames, ... can also be placed in front of the railing, which is set back slightly for this.

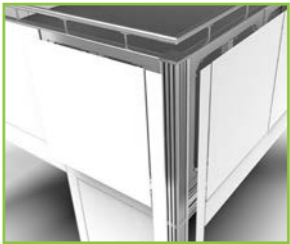


Stair

Both the railing and sides of the staircase can be finished with panels.

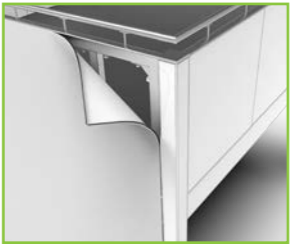
Panel

The Double Deck structure can be finished with 3mm thick panels.



Seamless textile

The frames of the Double Deck can be finished with a textile for a seamless result.

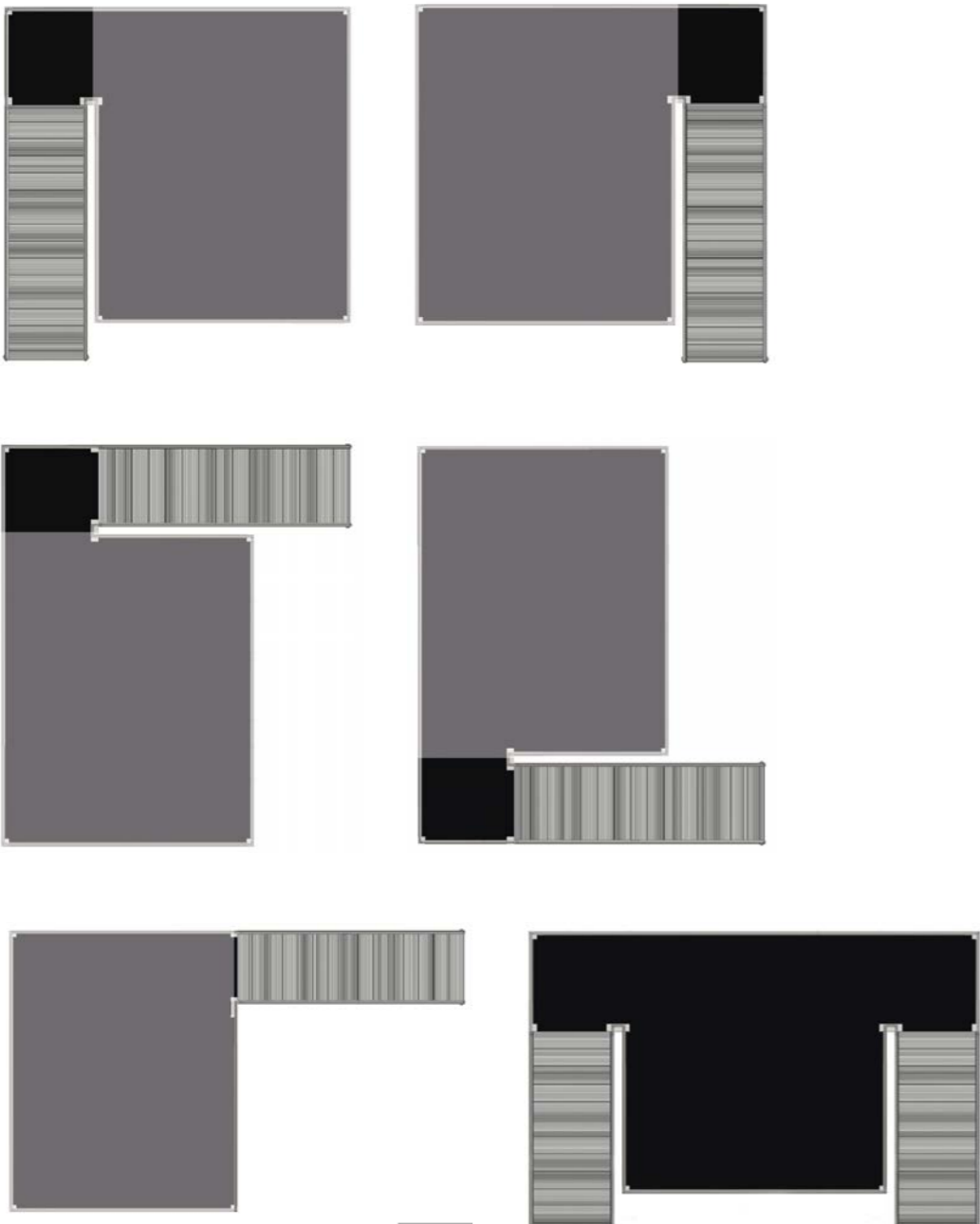


Get inspired!



The stairs

The stairs can be placed on every corner of your floor. Below you will find a visual representation of the various options.



Landing platform

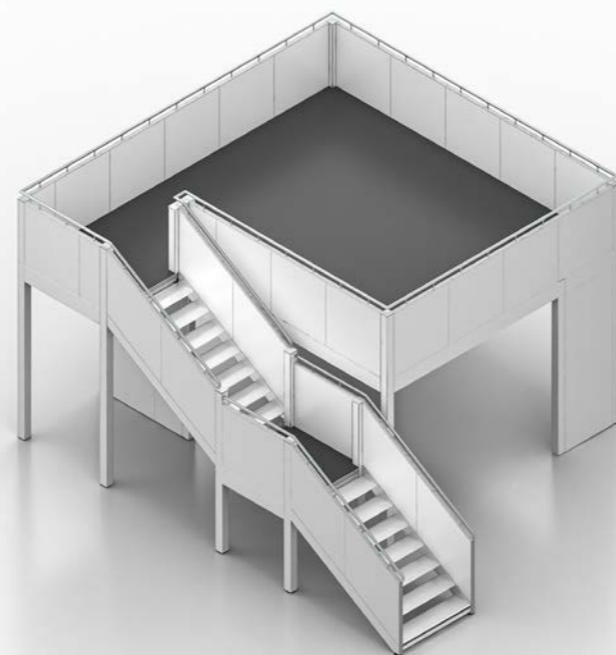
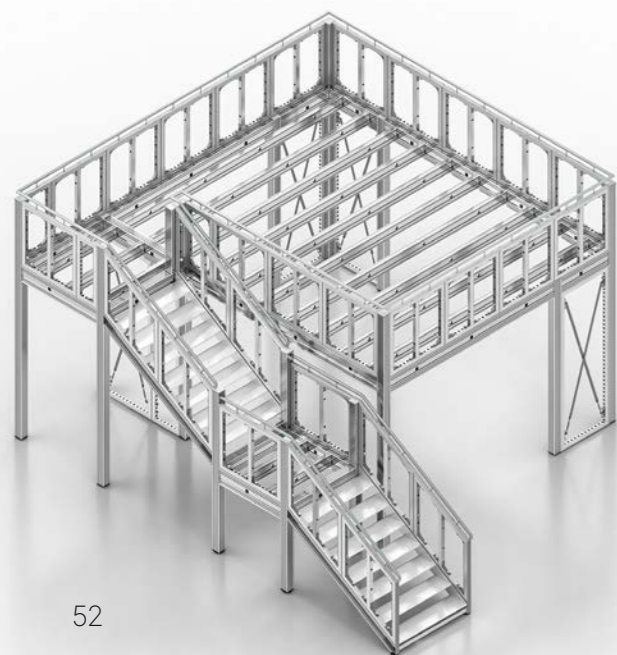


Cover bottom of the stairs

This can be purchased as a set of custom-made b62 frames and parts to close the bottom of the stairs of the Double Deck.

SET FRAMES UNDER STAIR 839 000






The add-ons

Optional to the Double Deck, we offer two possibilities to transport the profiles with ease:

Steel trolley

This complete steel trolley can be used to stack the beams and poles. The staircase cannot be put on the trolley. We recommend to transport this on a pallet.




Double Deck
trolley

Art. nr

990 60 37

Profile separator & bottom support

If you want to build your own case for transportation; you can do so with these products.



Profile
separator

Art. nr

990 60 37 01



Bottom
support

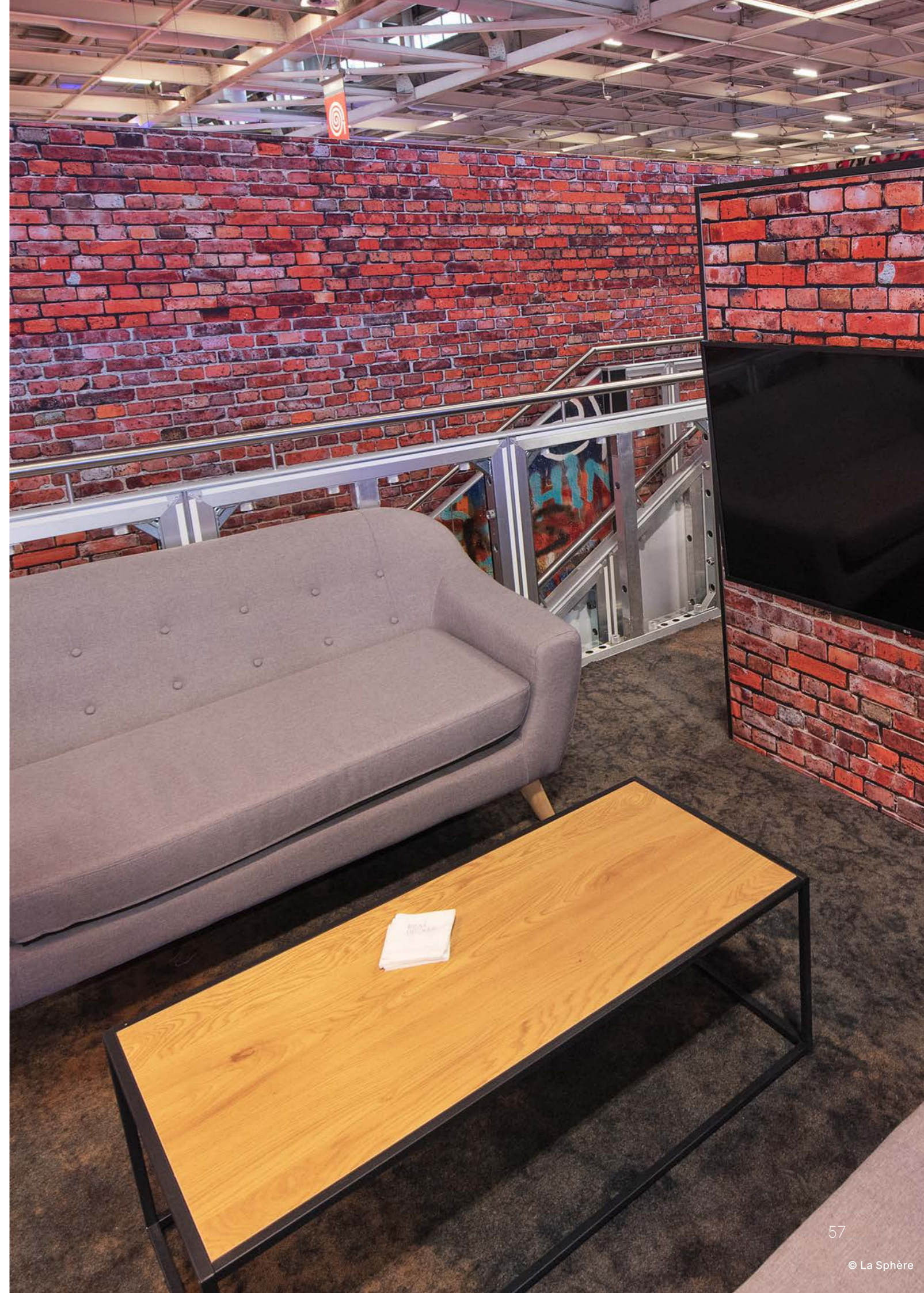
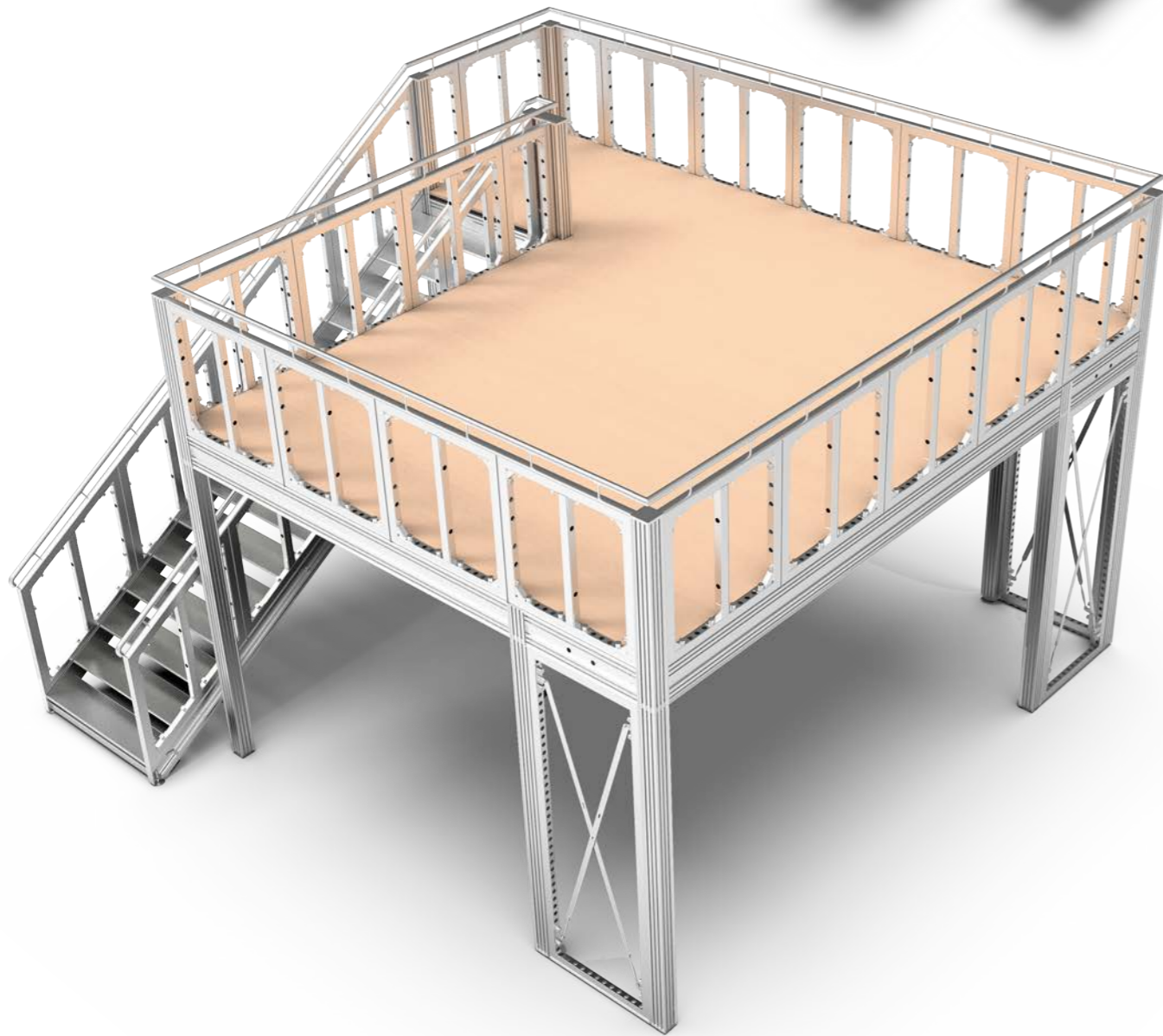
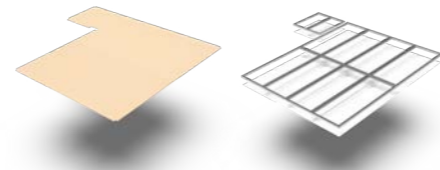
Art. nr

990 60 37 02



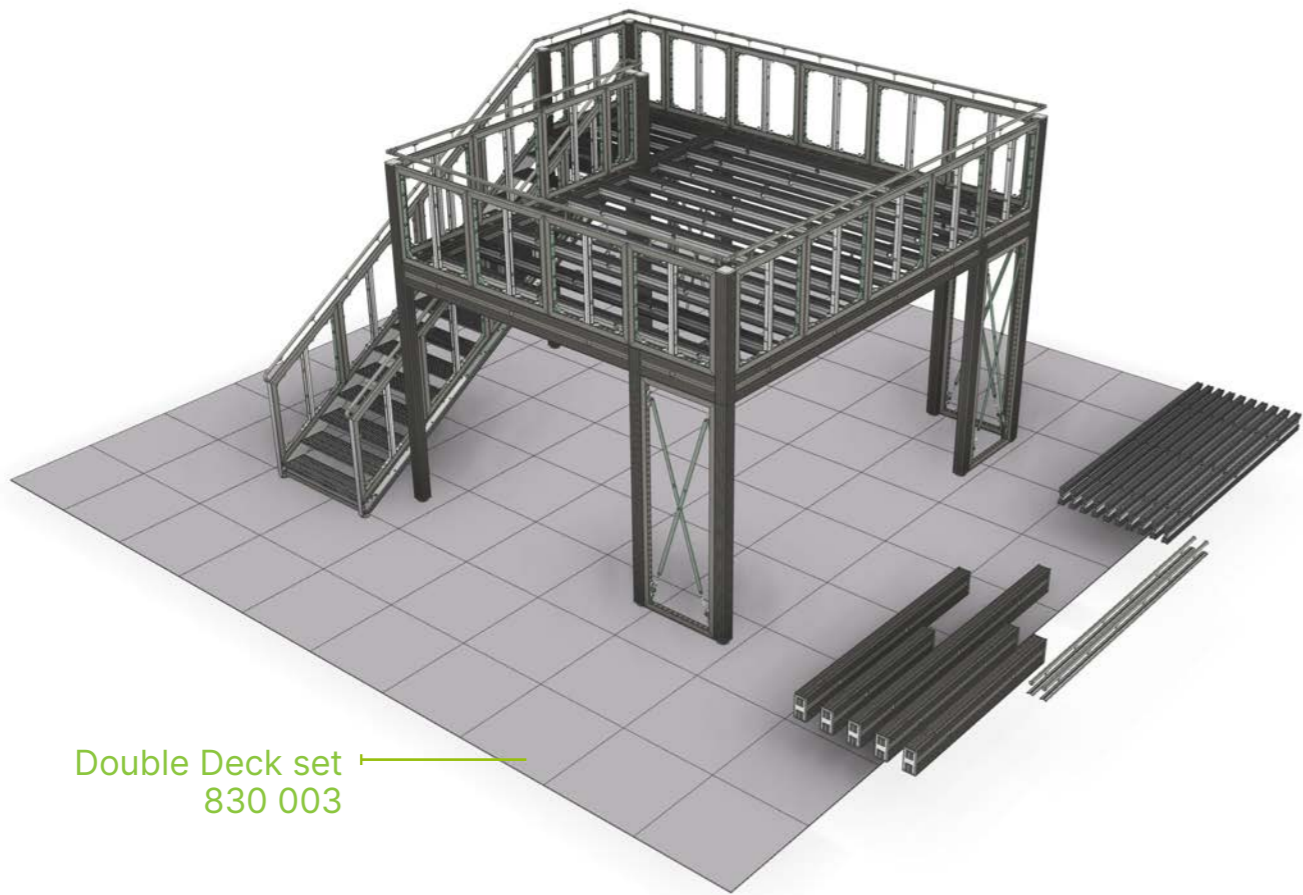
Finish

The finishing of floor and ceiling is not provided in the Double Deck modules. For the floor, **minimum 22 mm chipboard** must be provided. Standard b62 frames can be mounted underneath to make a ceiling. You can even close off the lower part with frames to have an extra meeting space.



Double Deck set

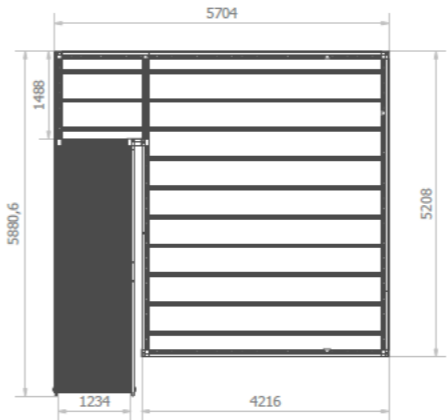
Profiles, poles, beams, floor brackets, staircases and railings: we offer you entire modules which you can easily add to your stand design. With the **Double Deck set 830 003** you can create up to six different configurations. **Other configurations on request, please contact us for more information.**



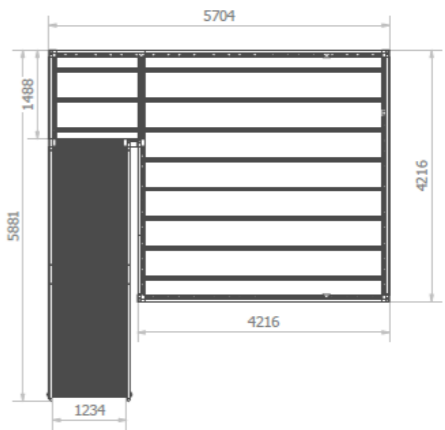
To transport the profiles of the set 830 003, you need two trolleys 990 60 37.

Configurations

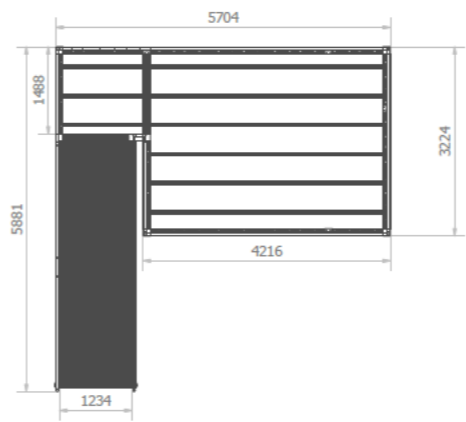
Configuration 1



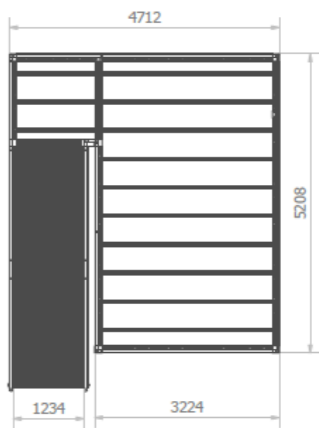
Configuration 2



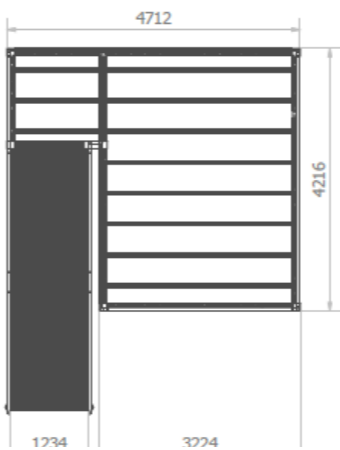
Configuration 3



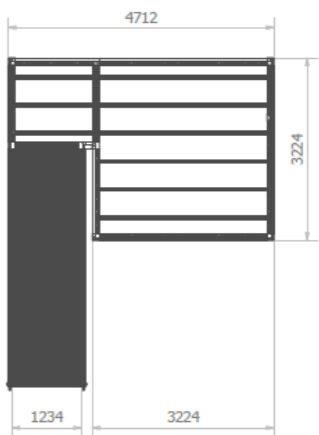
Configuration 4



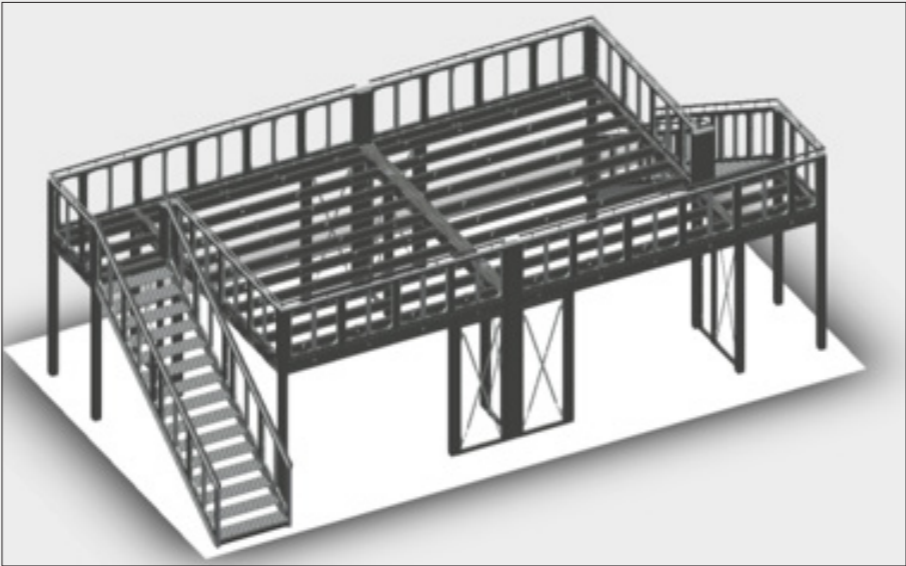
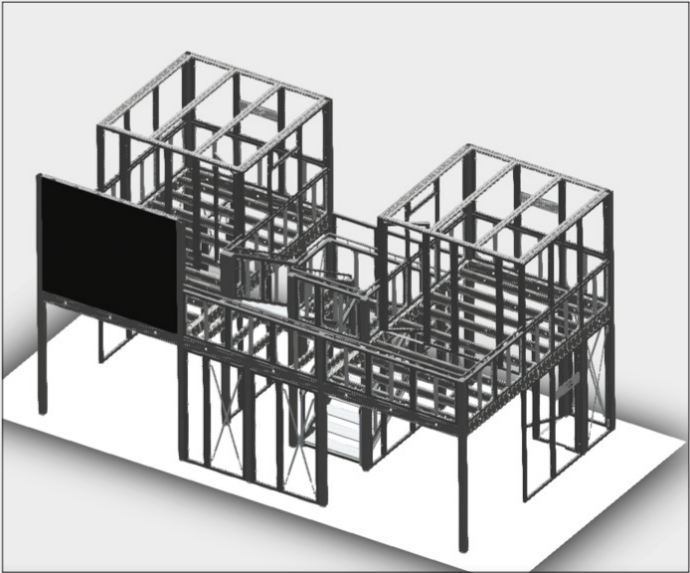
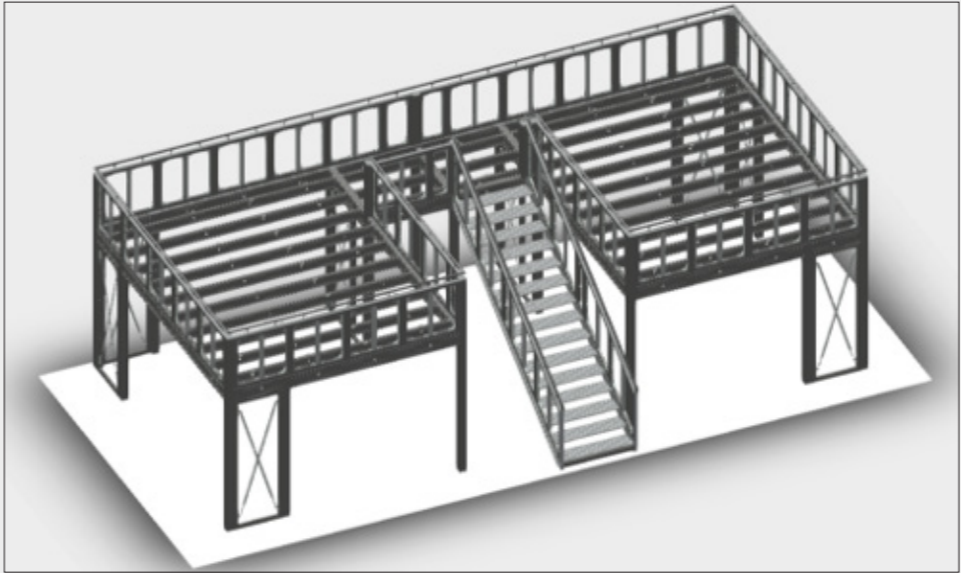
Configuration 5



Configuration 6



Combine our sets for an outstanding result!





90° support



beMatrix, your reliable partner

Before, during and even after the completion of your project, beMatrix is always at your service. beMatrix clients can rely on an extensive and innovative product range, creativity that manifests itself in inventive design, thorough technical and commercial support, flexible delivery times and all the benefits of a strong, cohesive international sales network.



Logistics

The aluminium frame system is lightweight, hence very ergonomic and eco-friendly: no need for the stand builder to carry around heavy structures, while **transport weight and CO2 emissions remain low**.

beMatrix also helps with the transportation from departure to arrival, including any customs formalities.



MybeMatrix

Technical leaflets & 3Ds
In MybeMatrix you have access to all our "how-to's" and technical leaflets with step by step guides.
3Ds show more than images.
Get full access to the 3D library!



beMasters
Our international network of exhibition builders.



beCAD
Create, control and calculate your beMatrix project with beCAD.
Completely free, all-in-one online tool loved by exhibition designers.



beAcademy
Our events are the perfect opportunity to discover the versatility of the frame system and to get a unique glimpse behind the scenes of beMatrix.



bePartner network
We collaborate with a few select partners/suppliers for specific services. These partners have been hand-picked and they are audited annually!



Kontainer
A wide selection of projects for you to become acquainted with beMatrix products, services and the endless possibilities of our system.

Scan and discover
our bePartners.



Global Rental Network

The Global Rental Network is a **network of service centres** holding a large range of beMatrix products, **spread all over Europe, the UK and the USA**. Thanks to this network, you do not have to ship your beMatrix stock between locations, but you can use the large stock available locally. Moreover, the availability of frames is almost unlimited, even allowing you to build exceptionally large projects.



Locations



We offer two different renting options at a favourable price and, maybe even more interesting, the possibility to spread the cost of your beMatrix project.

Short-term renting has a typical run time of 1-5 weeks. **Long-term** renting has a minimal run time of 1 year (fixed price for the first 6 months). Both rental plans can also be combined, to meet your specific needs.



Start exploring the Global Rental Network on our **website** or in **brochures** on www.beMatrix.com.

Benefits of our Global Rental Network

- Short-term or long-term rental (or combine both)
- Large local stock
- Local showroom near to you
- Technical advice and excellent service
- Test builds possible
- No extra storage space needed

Contact

 **beMatrix HQ, Belgium**
Head office | Rental & Service Center

Wijnendalestraat 174
8800 Roeselare
Belgium

+32 51 20 07 50
info@beMatrix.com

 **beMatrix HQ, Belgium**
Production

Industrieweg 49
8800 Roeselare
Belgium

+32 51 20 07 50
info@beMatrix.com

 **beMatrix Germany**
Rental & Service Center

Benzstraße 14
35799 Merenberg
Germany

+49 171 35 44 014
k.stegmaier@beMatrix.com

 **beMatrix Scandinavia**
Rental & Service Center

Idögatan 55
582 78 Linköping
Sweden

+46 727 28 34 54
m.hammarberg@beMatrix.com

 **beMatrix UK**
Rental & Service Center

Unit 2 Lobb Farm, London Road
Tetsworth Thame OX9 7BE
United Kingdom

+44 1844 28 10 85
a.burton@beMatrix.com

 **beMatrix France**
Rental & Service Center

Le Parc de l'Événement
1, Allée d'Effiat, 91160 Longjumeau
France

+33 614 51 57 15
d.breitschaft@beMatrix.com

 **beMatrix Italy**
Rental & Service Center

Via F. Marinotti 45
31029 Vittorio Veneto TV
Italy

+39 3453 65 69 32
g.grando@beMatrix.com

 **beMatrix USA**
Office | Production | Rental & Service Center

4476 Park Drive
Norcross, GA 30093
United States

+770 225 0552
t.ericson@beMatrix.us

 **beMatrix The Netherlands**
Rental & Service Center

Uilenwaard 6
5236 WB 's-Hertogenbosch
The Netherlands

+31 851 30 67 22
r.joeloemsing@beMatrix.com

 **beMatrix Poland**
Rental & Service Center

Winogrody 28
61-663 Poznań
Poland

+48 513 18 00 99
l.checinski@beMatrix.com



We love our customers...

and their projects! Scan this QR code and scroll through some amazing realisations. Exhibits, events, retail, showrooms, pop-ups... all with beMatrix!





floorify
RIGID VINYL
PLANKS & TILES

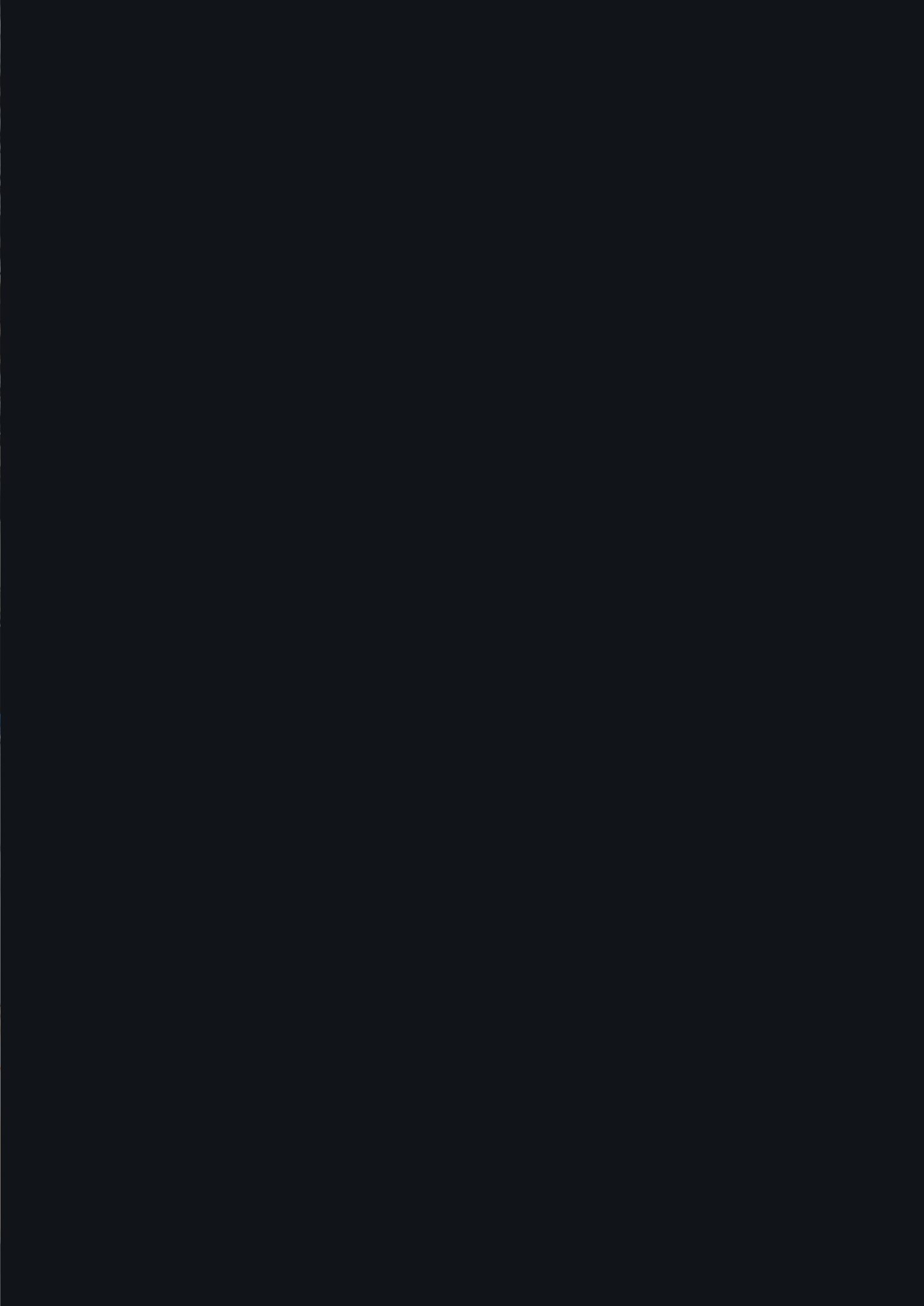
floorify
RIGID VINYL
PLANKS & TILES



More to discover!

Get to know our full System,
Electronics, and Outdoor range in
the brochures on www.beMatrix.com
or scan the QR code.







be strong <> be stylish
be anything.

Come say hi

HQ Belgium
Wijnendalestraat 174
8800 Roeselare

get in touch

+32 (0)51 20 07 50
info@beMatrix.com

or boost your inspiration

www.beMatrix.com
socials @beMatrix

f in  