

XTREME SOLUTIONS

# BECONSTRUCT

be anything.

EN





<b>Spans</b>	<b>4</b>
Small Spans	4
Medium spans	4
Large spans	5
<b>beConstruct structure</b>	<b>6</b>
Non-load bearing designs with the construction profile	6
<b>The body</b>	<b>8</b>
Mix and match with...	10
<b>The skin</b>	<b>14</b>
<b>The add-ons</b>	<b>17</b>
<b>Target load tables</b>	<b>18</b>
Profile clamped (with 90° connector and supportblock): one full profile	18
Profile clamped (with 90° connector and supportblock): with 180° connector (multiple profiles)	19
<b>The 8 beMatrix principles</b>	<b>20</b>



The world of stand building never ceases to evolve. Stands become increasingly large in size, more conspicuous, with influences from the AV sector demanding more bearing capacity of the actual structures.

Since beMatrix closely monitors trends in the industry, we offer another Xtreme solutions: beConstruct. Towering stands, large spans, ... all **non-load bearing designs without overkill.**



# Spans

In the world of live events and exhibitions, we've noticed the desire of our clients to build bigger. These types of designs **demand more load bearing capacity on the structures**. Let's take a look at the different beMatrix options to build small, medium or large spans in a safe and efficient way.

## Small Spans

For small and limited spans you're all set using the **b62 frames** combined with the **corner profile square 62**.



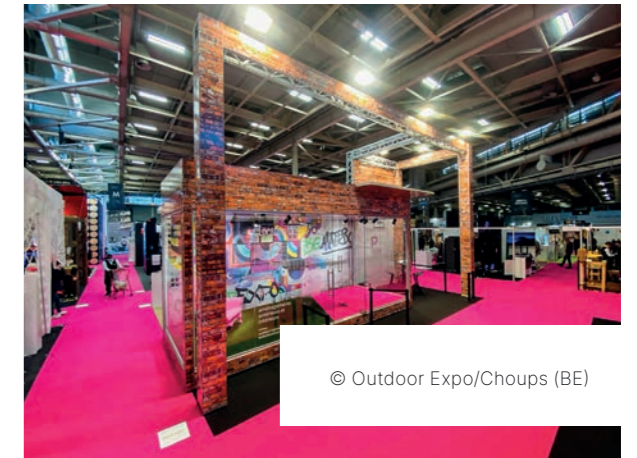
## Medium spans

For medium spans that **do not carry heavy items** like LEDskin® (not load bearing), we recommend using **beConstruct**, our newest construction profile.



## Large spans

Want to take your build a step further? Is your design **load bearing**? Then **beTruss** is your solution for large spans. It's even possible to add LEDskin® tiles to the beTruss provided that LEDskin® and beTruss are built at the same time.



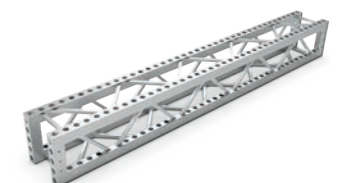
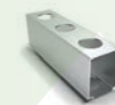
© Outdoor Expo/Choups (BE)



S

M

L

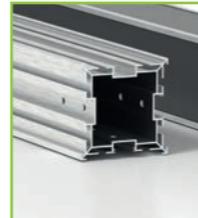




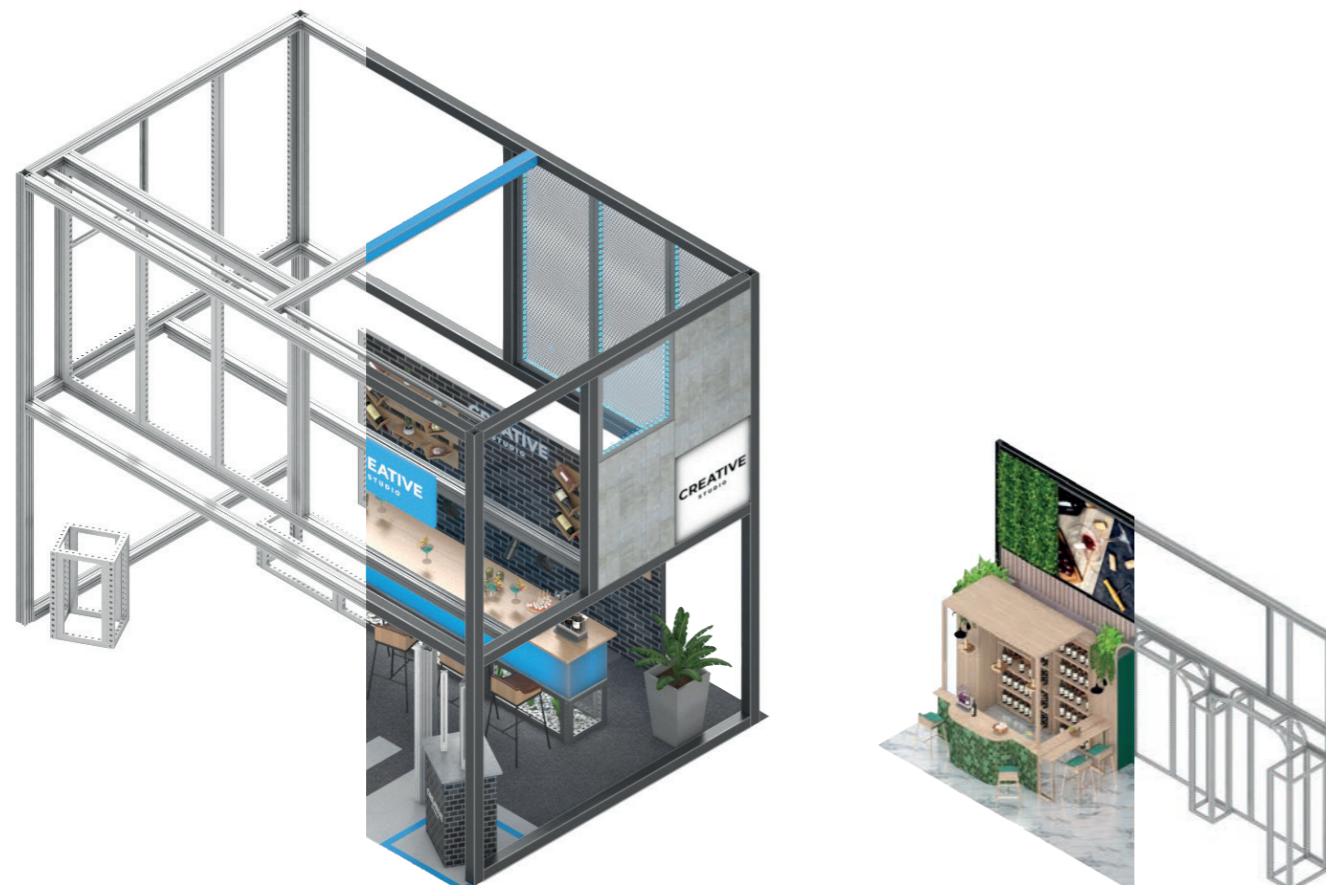
# beConstruct structure

## Non-load bearing designs with the construction profile

beConstruct is our new construction profile that **lets you build big and open non-load bearing constructions**. It's the perfect solution for designs that require more than just frames but less than beTruss. The dimensions of beConstruct are **124 mm by 124 mm** making it fit perfectly within the beMatrix system (where width, length and height are always multiples of 62). So beConstruct can be perfectly attached to the existing frames in your stock, using existing and a number of new connectors.



Our new beConstruct construction profile is **lighter to build with** compared to Double Deck's poles & beams. This means faster build times and reduced labor costs. You can build in both 90° (=corners) and in 180° (=extensions) directions. Use the D30 slot connector to hang b62 frames on it. The **migration between beConstruct and b62 frames** opens many design opportunities in the exhibit and event industry.





# The body

## 90° connector

A strong beMatrix connector connecting 2 aluminum construction profiles at a perfect 90° angle. **Patented design.**

Art. nr 710 30 0214



## Slot connector support

The slot connector support can be put in the construction profile beforehand. Always used together with the 710 30 0214 in a 90° connection. In addition, it also serves as a support to rest a horizontal profile on before securing the 90° connector.

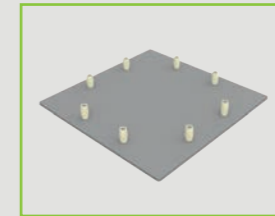
Art. nr 710 30 0217



## End piece

The cherry on the cake: an end piece that fits the beConstruct profile perfectly. For a neat result!

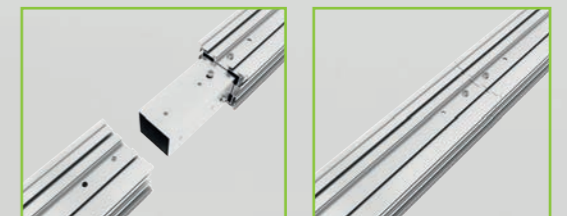
Art. nr 980 11 01 TG



## 180° connector

A strong beMatrix connector connecting 2 aluminum construction profiles in a 180° extension. **Patented design.**

Art. nr 710 30 0215



## Construction profile

The construction profile offers a solution for medium spans.

Dimensions 124 mm x 124 mm

Art. nr 980 ++++ D4X V



## Mix and match with...

beConstruct is one of the building blocks within the full beMatrix range. Unleash your creativity and design never-before-seen exhibition stands!

### Track Light profile

Adding lighting to your design is a piece of cake. The cross section of the beConstruct profile includes a notch to slide in a Track Light Profile into it. Even better: there's a channel on the inside where you can hide the cables. They are secured with a clip.

Art. nr 11 261 00 +++++



### SAM Light / BIG SAM Light

The SAM Light & BIG SAM Light connector is an attachment piece to integrate these lights to beMatrix's construction profile. Simply slide the plate onto the SAM Light or the BIG SAM Light and mount on the construction profile! Yes, it can be that simple.

Art. nr 710 30 0219



### Frames

Connect the construction profile to the b62 frames using the D30 slot connector and the M8 pin.

Art. nr 901 830 001

Art. nr 901 2048 0066 E



### Lightbox / glass profile

Use the mounting bracket with both M6 and M8 holes to mount, lightboxes, glass profile, etc. to the construction profile.

Art. nr 710 30 0218





## Lightbox

Use the mounting bracket with both M6 and M8 holes to mount, lightboxes, glass profile, etc. to the construction profile.

Art. nr 710 30 0218



## Double Deck

A strong beMatrix connector that will connect the be-Construct to the Double Deck in an angle/extension of 180°. The possibility to add the beConstruct to the Double Deck gives you tons of new design inspiration, isn't it?

Art. nr 710 30 0216

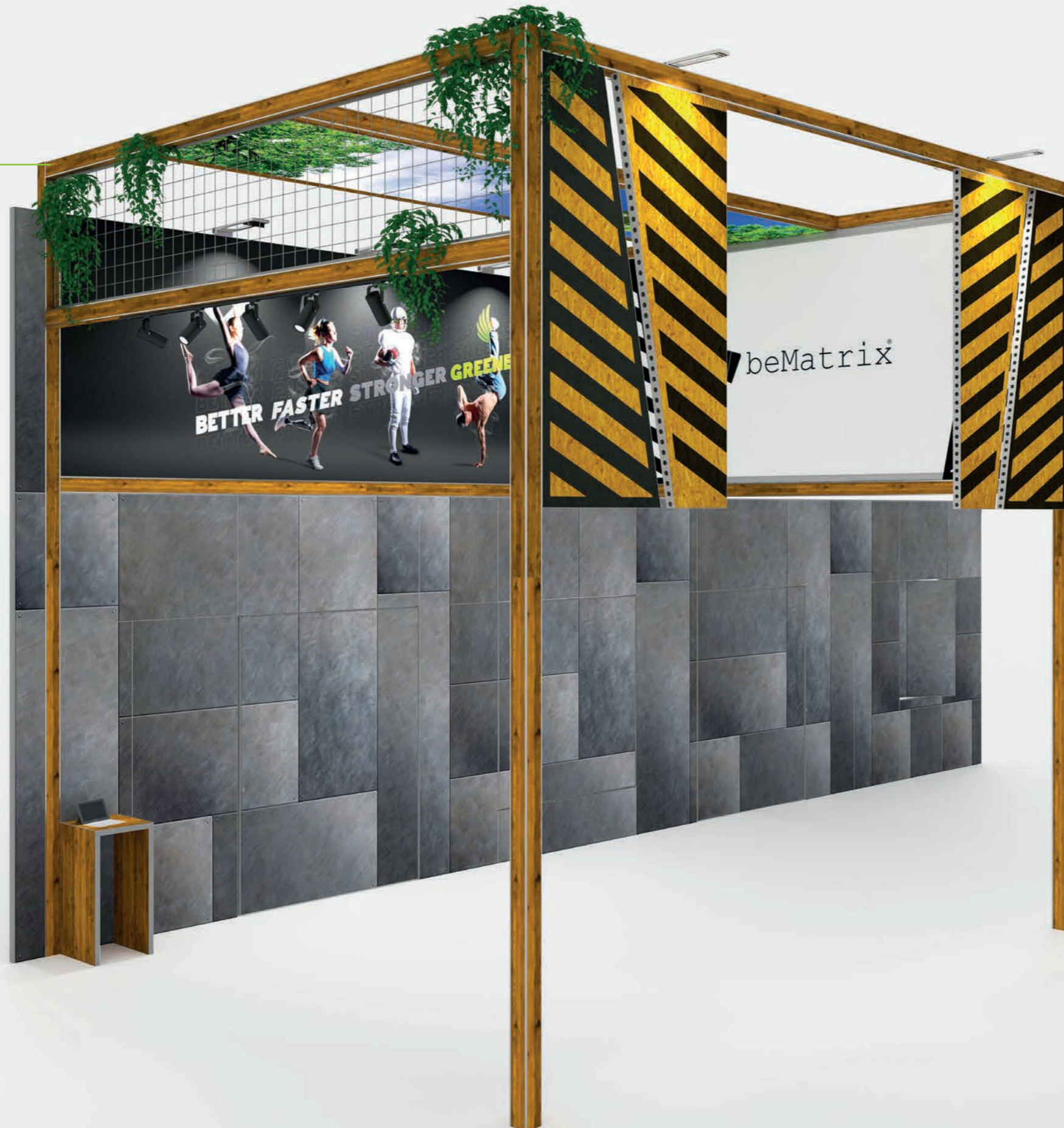




# The skin

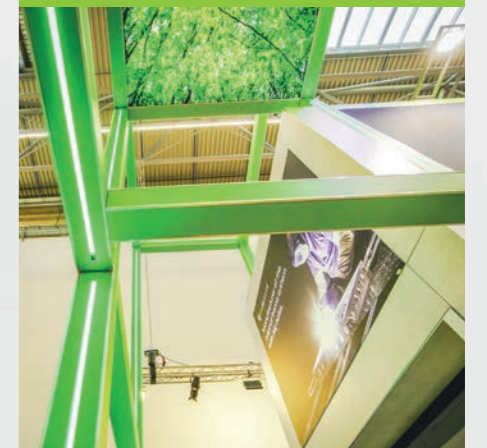
## Panels

Finish the 4 sides of the aluminium profile by using 3mm thick (branded or non-branded) panels, guaranteeing you a sleek result!



## Tip

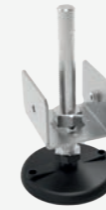
With lighting, you can get as creative as you want! Our ultimate tip is to mount a LED strip in the construction profile. This will accentuate the poles and emphasise the straight lines in your stand.







# The add-ons



## Adjustable foot for the construction profile

The adjustable foot for the construction profile can be mounted on the underside of the profile to change its height.

Art. nr

901 20 040



## Suspension connector

The rigging (suspension) connector is a super-strong connector with an eye to hang your beConstruct setup from the ceiling.

Art. nr

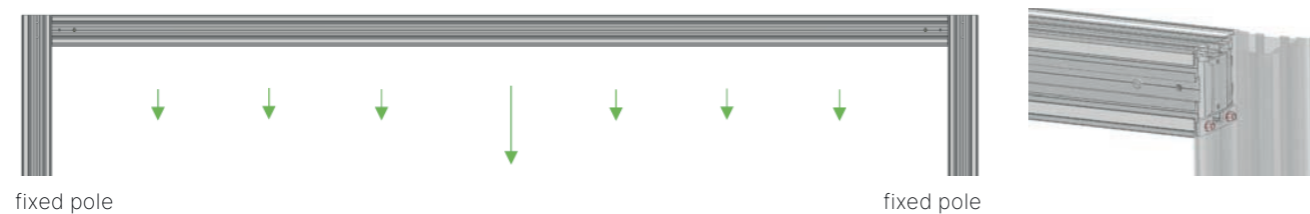
710 30 0220





# Target load tables

## Profile clamped (with 90° connector and support block): one full profile



Load limits and displacements:

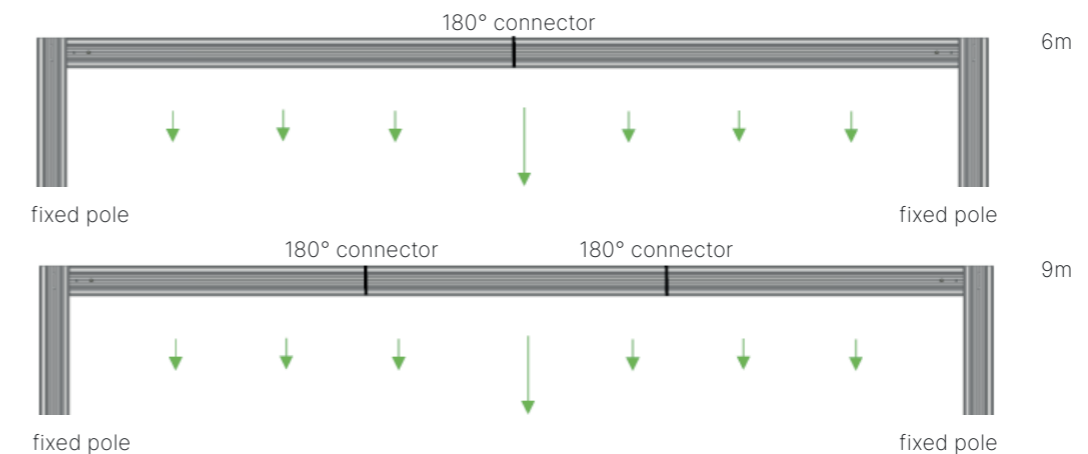
Length (m) / (ft)	UDL					CPL				
	(N/m)	(kg/m)	(lbf/ft)	(mm)	(in)	(N)	(kg)	(lbf)	(mm)	(in)
3 / 9.84	2.029 <sup>1</sup>	207 <sup>1</sup>	139 <sup>1</sup>	9.9	0.39	6.088 <sup>1</sup>	621 <sup>1</sup>	417 <sup>1</sup>	15.9	0.63
4 / 13.12	1.512 <sup>1</sup>	154 <sup>1</sup>	104 <sup>1</sup>	22.9	0.90	4.864 <sup>2</sup>	496 <sup>2</sup>	333 <sup>2</sup>	29.6	1.17
5 / 16.4	942 <sup>2</sup>	96 <sup>2</sup>	65 <sup>2</sup>	34.6	1.36	3.139 <sup>2</sup>	320 <sup>2</sup>	215 <sup>2</sup>	37.1	1.46
6 / 19.69	544 <sup>2</sup>	55 <sup>2</sup>	37 <sup>2</sup>	41.8	1.65	2.77 <sup>2</sup>	222 <sup>2</sup>	149 <sup>2</sup>	44.8	1.76

<sup>1</sup>Limited by the maximum allowable shear load on the positioning block.

<sup>2</sup>Limited by the connection.

- UDL: Uniform distributed load.
- CPL: Center point load.
- Loading table only valid for static loads.
- Loading table only valid for single spans with support at both end.
- The self-weight of the profile is already taken into account.
- Loading table is calculated according and in compliance with the European standard (Eurocode EN1990).
- Loading table excluding frequent use factor.
- Loading table & deflections are based on good assembled and aligned connectors.

## Profile clamped (with 90° connector and support block): with 180° connector (multiple profiles)



Load limits and displacements:

Length (m) / (ft)	UDL					CPL				
	(N/m)	(kg/m)	(lbf/ft)	(mm)	(in)	(N)	(kg)	(lbf)	(mm)	(in)
6 / 19.69	212	21.6	14.5	5.2	0.20	850	86.6	58.2	7.3	0.29
9 / 29.53	62	6.3	4.2	10.2	0.40	376	38.3	25.8	12.9	0.51

[Download the beConstruct manual.](#)



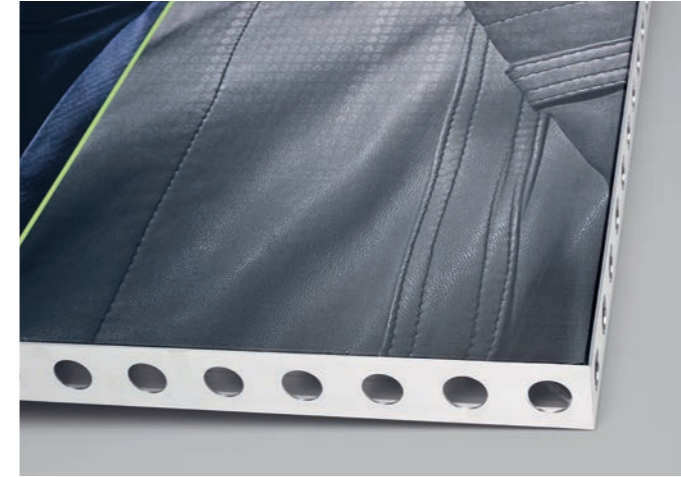


## The 8 beMatrix principles



### Quality guaranteed

All beMatrix frames are manufactured in-house, so we are in control of every step in the production process. Continuous optimisation and innovation initiatives ensure the system always complies with the market's demands.



### Top finishing

The beMatrix stand building system comes with a large range of tools and accessories to finish your stand exactly the way you envisage it. With the infills, you can even hide the entire frame system so it becomes invisible to the eye. Thanks to our 'seamless' concept, not one seam will be noticeable.

### Freedom to design

A beMatrix stand combines the benefits of a modular system with the possibilities of made-to-measure solutions. Almost any shape, contour and construction is conceivable and can easily be created. One single frame allows you to create all different kinds of stand concepts.



### Lightweight

The aluminium frame system is lightweight, hence very ergonomic and eco-friendly: no need for the stand builder to carry around heavy structures, while the transport weight and CO2 emissions remain low.



### Fast

Assembly and disassembly of the beMatrix system takes hardly any time. Its weight, simplicity and tool free assembly save loads of time, leaving you space to focus on the finishing details of your stand. Isn't that what makes you stand out most at a fair?

### Long life cycle

The system is extremely sturdy, making it endlessly reusable. Wear and tear won't shorten its life cycle, since the frame is not visible to the eye once the entire stand is set up.

### Ecologically sound

Because of its low weight, long life cycle and modular character, the beMatrix frame system is the eco-friendliest system today. Moreover, it is made out of untreated aluminium, so 100% recyclable and reusable without any quality losses.

### International network

The bePartner network brings together real ambassadors of the beMatrix frame system, each with their own expertise: stand building, textile printing, LEDskin®, Double Deck... A creative cross-pollination offering you as our client nothing but benefits.





**be strong**  **be stylish**  
**be anything.**

**Come say hi**

HQ Belgium  
Wijnendalestraat 174  
8800 Roeselare

**get in touch**

+32 (0)51 20 07 50  
info@beMatrix.com

**or boost your inspiration**

www.beMatrix.com  
socials @beMatrix  
