

Frame trolleys

Lightweight and
steel trolley for
b62/b55/DMK



beMatrix[®]
re!nventing stand building systems

Frame trolleys

**Lightweight
trolley for
b62/b55/DMK**

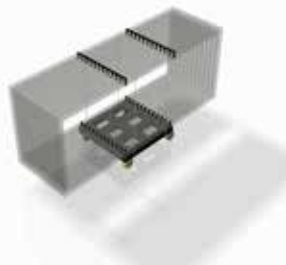
- Compact and lightweight trolley with optimal price quality.
- Can easily be loaded and unloaded by a single person.
- Very compact when empty.
- For frames with or without panels. In case of frames without panels: empty spaces in between the frames can be used for other parts.
- 12 frames can be stacked in one layer, 24 frames in two layers.
- 3 trolleys can be lined up in a truck with standard width.



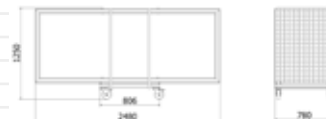
Frame trolleys

**Lightweight
trolley for
b62/b55/DMK**

Specifications



12 frames can be
stacked in one layer.



Dimensions of the trolley when stacking
one layer of frames.

Width: 2480mm
Height: 1250mm
Depth: 780mm

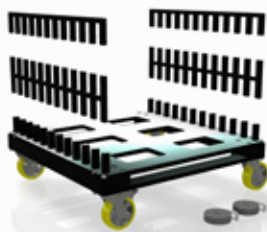


24 frames can be
stacked in two layers.



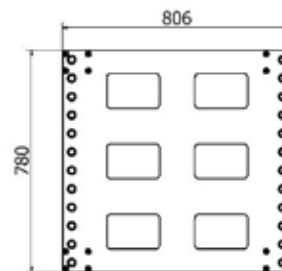
Dimensions of the trolley when stacking
two layers of frames.

Width: 2480mm
Height: 2250mm
Depth: 780mm



**990 60 24 FRAME
TROLLEY FOR b62/DMK
[12-24 FRAMES]**

Incl. 2 single frame
braces, 2 double frame
braces and 2 straps.



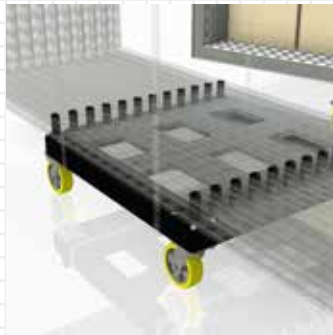
Dimensions of the lightweight trolley.

beMatrix®
re!nventing stand building systems

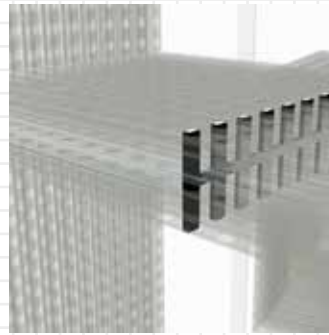
Frame trolleys

**Lightweight
trolley for
b62/b55/DMK**

Specifications



Frames stacked onto the trolley.



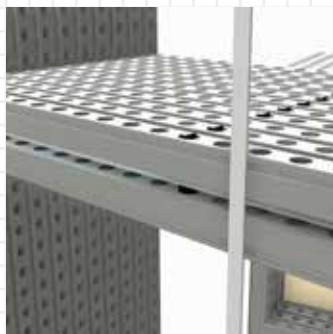
Single and double frame braces secure the frames in place.



990 60 24 S FRAME
BRACE SINGLE FOR
FRAME TROLLEY 990
60 24



990 60 24 D FRAME BRACE DOUBLE
FOR FRAME TROLLEY 990 60 24



The frame trolley includes 2 straps to be used in case of double stacking.



990 60 24 14 STRAP [7.5M X 25MM]
GREY

Frame trolleys

**Steel trolley for
b62/b55/DMK**

- Frames are completely protected, all the way around.
- Very compact when empty.
- For frames with or without panels. In case of frames without panels: empty spaces in between the frames can be used for other parts.
- 10 frames can be stacked in one layer, 20 frames in two layers.
- 3 trolleys can be lined up in a truck with standard width.
- Wooden side panels are available for maximum protection.
- Available in two different lengths: for 2480mm and 2976mm frames.



Frame trolleys

Steel trolley for b62/b55/DMK

Specifications



A total of 10 frames
can be stacked onto the
steel trolley.



A total of 20 frames (2 layers of 10) can
be stacked onto the trolley with the extra
option 990 60 26.



Dimensions of the steel
trolley for 2480mm
frames (when stacking
one layer of frames).

Width: 2580mm
Height: 1210mm
Depth: 764mm



Dimensions of the steel trolley for
2480mm frames (when stacking two
layers of frames).

Width: 2580mm
Height: 2232mm
Depth: 764mm



Dimensions of the steel
trolley for 2976mm
frames (when stacking
one layer of frames).

Width: 3076mm
Height: 1210mm
Depth: 764mm



Dimensions of the steel trolley for
2976mm frames (when stacking two
layers of frames).

Width: 3076mm
Height: 2232mm
Depth: 764mm

Frame trolleys

Steel trolley for b62/b55/DMK

Specifications



Steel trolley is very compact when empty.



990 60 25 STEEL TROLLEY FOR 10 B62 - DMK FRAMES [EXCL. WOOD PANELS]



990 60 26 OPTION FOR EXTRA 10 B62 - DMK FRAMES ON STEEL TROLLEY 2480MM



990 60 27 WOODPANELS FOR TROLLEY 2480MM [4 SIDES]

Wooden panels can be purchased to guarantee maximum protection of your frames.



990 60 31 SINGLE SIDED PLATE/ CONNECTOR FOR STEEL TROLLEY b62 - DMK 10 FRAMES



990 60 32 DOUBLE SIDED PLATE/ CONNECTOR FOR b62 - DMK TROLLEY

beMatrix[®]
re!nventing stand building systems

beMatrix head-office Belgium

Wijnendalestraat 174

B - 8800 Roeselare

T. +32 51 20 07 50

F. +32 51 24 18 61

www.beMatrix.com